

FedEx

SIC Codes 4513
 Primary Activity Cargo Handling
 Drainage Areas 5, 6
 Nearest MS4 Inlet < 200 ft.
 Address 2221 West Washington St.
 San Diego, CA 92110

Contact Information
 Connie Robertson Supervisor
 P 6196889203
 csrobertson@fedex.com

 Robert Garcia Supervisor
 P 6196889203
 rtgarcia@fedex.com

Facility Description and Activities

1. Aircraft loading/unloading occurs at four gates on the North Ramp area.
2. ASIG fuels aircraft, vehicles and equipment.
3. Two dumpsters utilized by FedEx's office are managed by EDCO and located outside of the parking lot.
4. Three above ground storage tanks are outside FedEx's office, two contain drinking water and one contains waste water. Palomar Water delivers potable water and Diamond Environmental Services collects the waste water regularly.
5. A spill kit is located inside a container south of the office, containing absorbent litter, mats, and sox.
6. Minor vehicle maintenance is conducted outdoors in designated vehicle maintenance area. Maintenance area is covered and has a spill protection area.
7. Hazardous waste and waste oil are stored in covered storage containers, on pallets, and inside sheds southeast of FedEx's offices. Quest is contracted to pick up hazardous wastes.
8. Significant materials are stored in covered storage containers on pallets inside the sheds southeast of FedEx's office.
9. Safety Kleen is contracted to clean up any hazardous material spills that may occur.
10. Vehicles are parked in front of and northwest of FedEx's offices.
11. Cargo loading and unloading equipment is staged in designated areas throughout the ramp.
12. GAT performs lavatory and potable water services as needed. This rarely occurs.
13. Fleetwash washes some of the equipment on site. They utilize a system that captures the wash water and dispose of it offsite. The equipment does not utilize cleaning agents, only highly pressurized water for cleaning.
14. Interstate recycles all used batteries.

Significant Materials/Activities Potentially Exposed to Storm Water

Potential Pollutant SourcesPotential Pollutants

Cargo handling
 Equipment storage
 Fluid leaks
 Fuel spills,Fuel transfer
 Material loading/unloading
 Outdoor waste storage
 Potable water flushing
 Tank fuel transfer
 Trash collection
 Vehicle parking

Tenant Summaries

Anti Freeze
 Battery Acid
 Brake Fluid
 Carburetor Cleaner
 Cleaning Solutions
 Coolant
 Degreasers
 Degreasers (Citrus based)
 Fuel
 Fuel (Diesel)
 Hydraulic Fluids
 Lubricants
 Metals
 Oil & Grease
 Paints
 Recyclables
 Solvents
 Transmission Fluid
 Trash

Best Management Practices Applicable to Facility

Activities

Non-Storm Water Management
 Outdoor Equipment Ops Maintenance Areas
 Aircraft, Ground Vehicle & Equipment Maintenance
 Aircraft, Ground Vehicle & Equipment Fueling
 Aircraft, Ground Vehicle & Equipment Cleaning
 Outdoor Loading/Unloading of Materials
 Outdoor Material Storage
 Waste Handling & Disposal
 Employee Training
 Potable Water System Flushing
 Parking Lots

BMPs

SC01 - 1, 2, 4
 SC02A - 1, 2
 SC02B - 1, 2, 3, 4, 5, 6, 7, 8, 9, 10, 11, 12, 13
 SC03 - 1, 2, 4, 5, 6, 8
 SC04 - 1, 2, 3, 4, 5, 6, 7
 SC06 - 1, 2, 3, 4, 6, 7
 SC07 - 1, 2, 3, 6, 7, 8, 11, 12
 SC08 - 1, 2, 3, 4, 5, 7, 8, 9, 10, 11, 12, 14
 SC10 - 1, 2, 3, 4
 SC14 - 1
 SC16 - 1, 2, 3, 4, 5, 6, 11, 12
 SC18 - 1, 2, 3, 4, 5, 6, 7, 8, 9

Housekeeping

SC19 - 1, 2

Safer/Alternative Products

SR01 - 1, 2, 3, 4, 5, 6, 7, 8, 9, 10

Spill Prevention, Control & Clean Up

* Appendix B provides descriptions for each BMP category.

Structural Control measures used by facility:

Covered sheds over equipment and material storage areas.

Fleetwash (subcontractor) uses a full capture system to wash vehicles and equipment. Wash water is disposed offsite.

Materials Storage Area

Sheds southeast of FedEx office on north ramp

Covered storage containers on pallets inside the sheds southeast of FedEx's office

Materials Storage Amounts

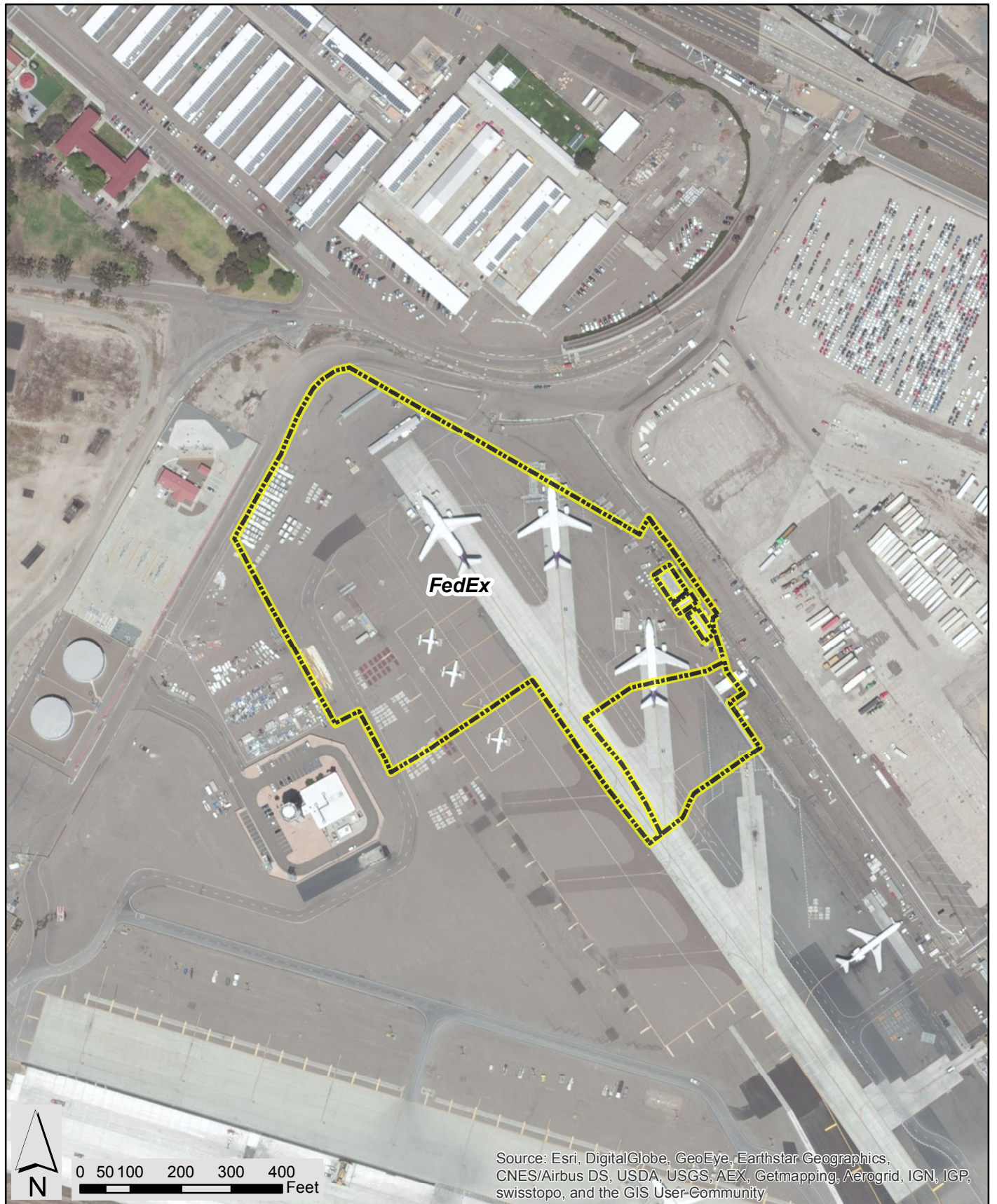
Hazardous waste and waste oils stored in sheds on north ramp southeast of FedEx office may be over 55 gallon

No other materials recorded over 55 gallons

Shipping/Receiving Area

FedEx office

Intentionally Left Blank



PROJECT NO.:
5025-13-0031
DATE: JUNE 2015
DRAWN BY: RMH
CHECKED BY: AJA

amec foster wheeler



FedEx
Operating Areas
San Diego International Airport

FIGURE

E-14

Intentionally Left Blank