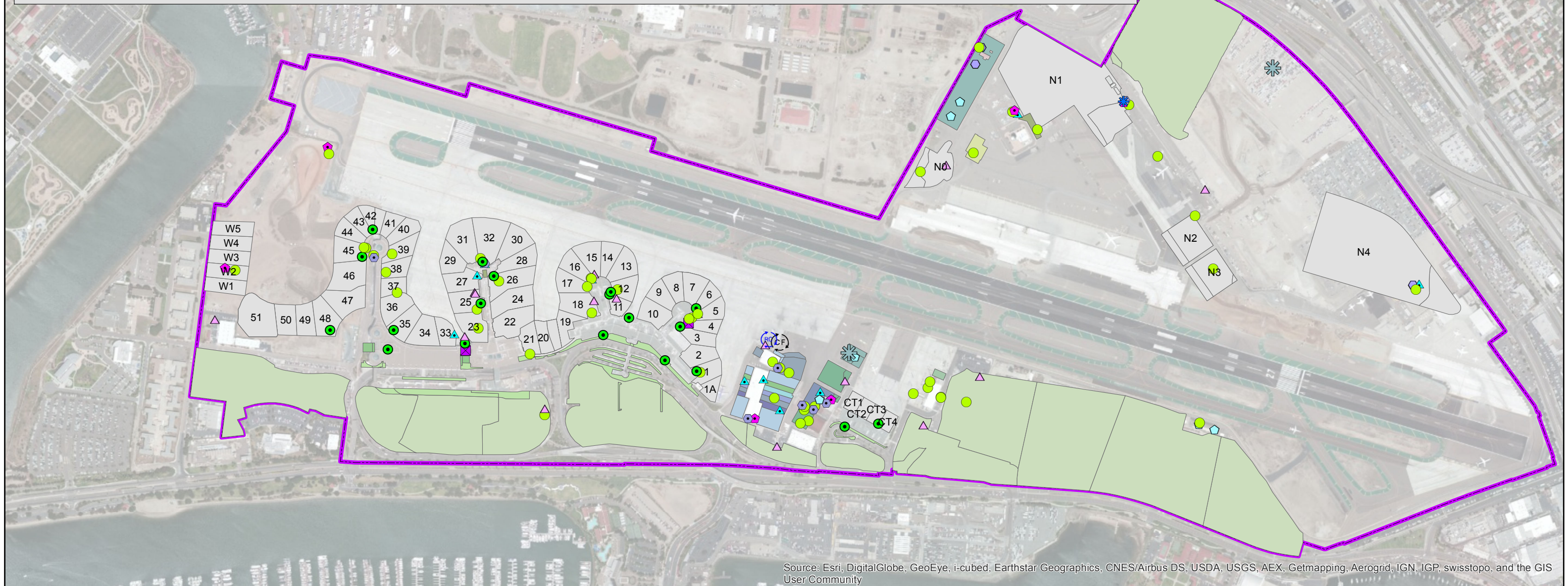


BMP SR01	SPILL PREVENTION, CONTROL, AND CLEAN-UP	
<p>PURPOSE: Prevent or reduce the discharge of pollutants to storm water resulting from spills, leaks and improper cleanup of significant and other materials.</p>	<p>TARGETED ACTIVITIES:</p> <ul style="list-style-type: none"> ➔ Aircraft Deicing/Anti-Icing ➔ Aircraft Lavatory Service ➔ All Fueling ➔ All Maintenance ➔ All Storage ➔ All Washing ➔ Cargo Handling ➔ Equipment Cleaning ➔ Fire Fighting Equip. Testing ➔ Floor Washdowns ➔ Garbage Collection ➔ Outdoor Washdown ➔ Painting/Stripping ➔ Runway Rubber Removal 	
<p>POLLUTION PREVENTION:</p>		
<p><input type="checkbox"/> Provide formal training in execution of the Spill Plan(s) to key personnel, with additional training for first responder level personnel. All employees should have basic knowledge of spill control procedures and potential dangers of spills on human health and the environment. Incorporate spill control procedures in regular safety meetings to reinforce practices.</p> <p><input type="checkbox"/> Maintain an inventory of appropriate cleanup materials and equipment on-site and strategically deploy cleanup materials and equipment based on the type and quantities of chemicals present.</p>	<p>Implement the following pollution prevention practices and BMPs to prevent spills and leaks of significant and other materials to the storm water collection system:</p>	<p>POLLUTANTS of CONCERN:</p> <ul style="list-style-type: none"> ➔ Aircraft Fire Fighting Foam ➔ Battery Acid ➔ Cleaning Solution ➔ Deicing/Anti-Icing Fluid ➔ Fuel ➔ Heavy Metals ➔ Hydrocarbons ➔ Lavatory Chemicals ➔ Metals ➔ Oil and Grease ➔ Paint ➔ Pesticides/Herbicides/ Fertilizers ➔ Potable Water System Chemicals ➔ Solvents ➔ Vehicle Fluids
<p>OPERATIONS:</p>		
<p>Sub-BMPs</p> <p>- 01 <input type="checkbox"/> Develop, implement and keep current Spill Plan, and develop facility spill prevention and response procedures.</p> <p>- 02 <input type="checkbox"/> Post a summary of the Spill Plan and spill response procedures, at key locations, identifying the spill cleanup coordinators, location of cleanup equipment, and phone numbers of regulatory agencies to be contacted in the event of a spill.</p> <p>- 03 <input type="checkbox"/> Train relevant employees and contractors in the implementation of the Spill Plan, if applicable, or spill control procedures.</p> <p>- 04 <input type="checkbox"/> Use leak and spill prevention devices.</p>	<p>APPLICABLE TENANTS/ DEPARTMENTS:</p> <ul style="list-style-type: none"> ➔ ACE ➔ Air Canada ➔ Alaska ➔ Allegiant ➔ Allied ➔ American Airlines ➔ ARFF ➔ ASIG ➔ Bradford ➔ British Airways ➔ Delta 	

<p>- 05 <input type="checkbox"/></p> <p>- 06 <input type="checkbox"/></p> <p>- 07 <input type="checkbox"/></p> <p>- 08 <input type="checkbox"/></p> <p>- 09 <input type="checkbox"/></p> <p>- 10 <input type="checkbox"/></p>	<p>Place adequate spill kits in appropriate locations.</p> <p>Notify Airport Operations (619-400-2710), the Airport Authority Environmental Affairs Department (619-400-2784), and any agencies or companies identified in the Spill Plan or facility spill prevention and response procedures in the event of a spill.</p> <p>In the event of a spill or release, immediately follow procedures identified in the Spill Plan or facility spill prevention and response procedures.</p> <p>Use only dry cleaning methods.</p> <p>Properly dispose of all used spill control and clean-up materials.</p> <p>Waste water from washing activities is captured by vacuum and properly disposed of, or is diverted to a structural treatment control, sanitary sewer, or dead end sump with pump.</p>	<ul style="list-style-type: none"> → DHL → Elite Line Service → Envoy → FedEx → Flagship → Frontier → Hawaiian → HFF → HMS Host → IAS → JAL → Jet Blue → Landmark → Mission Yogurt → SDCRAA → SeaPort → Siemens → Sky West → Southwest → Spirit → SSP → Sun Country → United → UPS → US Airways → Virgin America → Volaris → WestJet
<p>STRUCTURAL TREATMENT BMPs: Refer to BMP TC01 for information on structural treatment BMPs.</p>		
<p>BMP FREQUENCIES/EQUIPMENT/TOOLS: Spill prevention and control occurs on a daily basis. Clean up is as needed. Equipment/tools to implement BMPs include spill pallets, outdoor sheds, overpack containers, tarps, flammable materials storage lockers, bermed or containment areas, fiber rolls, shop vacuums, spill kits, brooms, and drums.</p>		
<p>AUTHORIZED LOCATIONS TO IMPLEMENT SPILL PREVENTION, CONTROL AND CLEANUP BMPs:</p>		
<p><input type="checkbox"/></p>	<p>Implement BMPs for the prevention of non-storm water discharges from spills, leaks or improper cleanups at the designated areas as shown in the attached map.</p>	
<p>Date:</p>		<p>Version: 2.0</p>

Airport Boundary	Tenant Gate Areas			
ACE	Tenant	Gate	Tenant	Gate
ASIG	Air Canada	22	Mission Yogurt	4
Alaska	Alaska	11, 13, 14, 15, 16, 17, 18	SDCRAA	19
Allied Aviation	Allegiant	23	SeaPort	11C
American	American/Envoy	27, 28, 29, 31, 32	Siemens	7, 8
Bradford	ARFF	N0	SkyWest	34, 35, 36, 37, 38
Delta	British Airways	20	Southwest	1, 1A, 2, 3, 4, 5, 6, 7, 8, 9, 10
ELS	Delta	41, 42, 47, 48, 49, 50, 51, W3, W4, W5	Spirit	20, 21, 22, 24, 26, 30
Flagship	DHL	N3	SSP	11, 12
HMS Host	FedEx	N1	Sun Country	51
Jet Blue	Frontier	12	United	38, 39, 40, 43, 44, 45, 46, W1, W2
Southwest	Hawaiian	51	UPS	N2, N3
US Airways	HFF	7, 8	US Airways	33, 34, 35
United	IAS	N2, N3	Virgin America	25
Dumpsters	JAL	20, 22	Volaris	20, 21, 22
Recycling	Jet Blue	36, 37	West Jet	22, 24, 26
Composting	Landmark Aviation	N4		
Underground Storage Tank				
Fueling				
Fuel Storage				
Grease Trap				
Loading				
Material Storage				
Metal Storage				
Oil Storage				
Industrial Waste				
Wash Area				



Source: Esri, DigitalGlobe, GeoEye, i-cubed, Earthstar Geographics, CNES/Airbus DS, USDA, USGS, AEX, Getmapping, Aerogrid, IGN, IGP, swisstopo, and the GIS User Community

PROJECT: 5013-11-0003		
DATE: 6/16/2015		
DRAWN BY: KMB		
CHECKED BY: AJA		



SAN DIEGO INTERNATIONAL AIRPORT
San Diego, California

STORM WATER MANAGEMENT PLAN
AT SAN DIEGO INTERNATIONAL AIRPORT

Intentionally Left Blank