

BMP SC02C		ELECTRIC VEHICLE MAINTENANCE	
PURPOSE: To prevent or reduce the discharge of pollutants to storm water from electric ground vehicle charging, maintenance and repair.		TARGETED ACTIVITIES: ➔ Vehicle Maintenance ➔ Battery Charging	
POLLUTION PREVENTION: Implement the following pollution prevention practices and BMPs to prevent discharges of pollutants to the storm water collection system:		POLLUTANTS of CONCERN: ➔ Battery Acid ➔ Battery Acid Neutralizing Agents ➔ Metals ➔ Vehicle Fluids	
<input type="checkbox"/> Develop a battery maintenance plan to provide procedures for cleaning and maintenance, develop a schedule for service, and to correct any issues that can potentially arise.	<input type="checkbox"/> Investigate use of smart chargers with multi-stage charging capability.		
OPERATIONS: Sub-BMPs		APPLICABLE TENANTS/ DEPARTMENTS: ➔ Alaska ➔ American Airlines ➔ Delta ➔ Elite Line Service ➔ FedEx ➔ Flagship ➔ Landmark ➔ SDCRAA ➔ SeaPort ➔ Siemens ➔ Southwest ➔ United ➔ US Airways	
- 01 <input type="checkbox"/> Do not overcharge batteries in electric vehicles.	- 02 <input type="checkbox"/> Park electric vehicles in cool and dry areas (e.g. shade under building) when not in use.		
- 03 <input type="checkbox"/> Use acid resistant drip pans sprinkled with battery acid neutralizing agent (e.g. lime or baking soda) when filling or cleaning electric vehicle batteries and dispose of waste properly.	- 04 <input type="checkbox"/> Maintain battery acid neutralizing kits adjacent to charging stations. Adequately recover spill response material from area after use and dispose of them in an appropriate manner.		
- 05 <input type="checkbox"/> Avoid overfilling electric vehicle batteries.	- 06 <input type="checkbox"/> Do not fill batteries or perform electric vehicle maintenance during rain events.		
- 07 <input type="checkbox"/> Store batteries inside in a cool and dry place if possible. If batteries are stored outside, store in a non-reactive container with a cover.	- 08 <input type="checkbox"/> Clean battery case and terminals regularly or when there is a buildup of corrosion with a rag dampened with a solution of water and battery acid neutralizing agent. Capture any wastewater to be treated as hazardous waste.		
- 09 <input type="checkbox"/> Apply petroleum jelly or grease on battery terminals to slow down corrosion process.	SEE ALSO BMP SC02B		
STRUCTURAL TREATMENT BMPs: Refer to BMP TC01 for information on structural treatment BMPs.			
BMP FREQUENCIES/EQUIPMENT/TOOLS: Equipment/tools to implement BMPs include drip pans, neutralizing kits, outdoor sheds, storage containers, appropriate secondary containment devices, spill kits and drums.			
AUTHORIZED ELECTRIC VEHICLE MAINTENANCE LOCATIONS:			

<input type="checkbox"/>	Use only the designated areas for electrical vehicle maintenance as shown in the attached map.	
Date:		Version: 1.0

Airport Boundary

ACE

SDCRAA

ASIG

Alaska

American

Delta

ELS

Flagship

HMS Host

Jet Blue

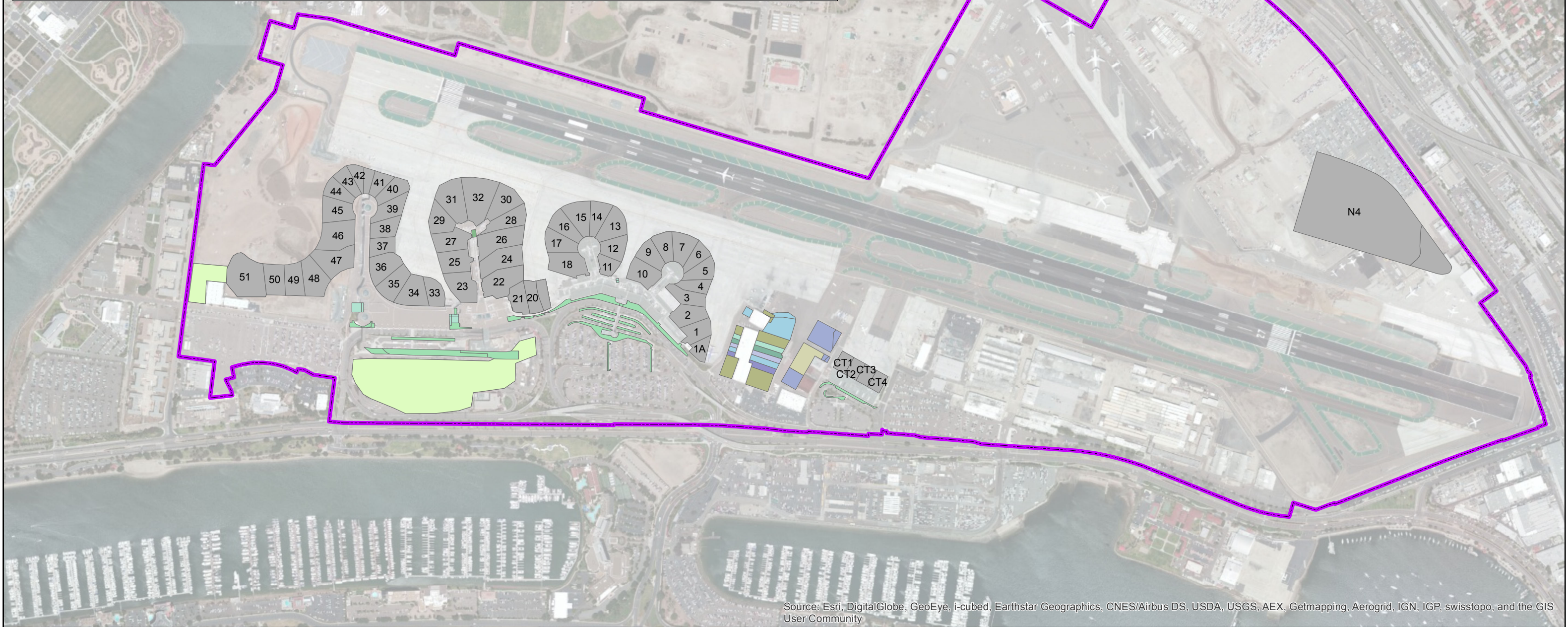
Southwest

US Airways

United

Tenant	Gate
Air Canada	22
Alaska	11, 13, 14, 15, 16, 17, 18
Allegiant	23
American/Envoy	27, 28, 29, 31, 32
British Airways	20
Delta	41, 42, 47, 48, 49, 50, 51
Frontier	12
Hawaiian	51
JAL	20, 22
Jet Blue	36, 37

Tenant	Gate
Landmark Aviation	N4
SDCRAA	19
SeaPort	11C
Siemens	7, 8
SkyWest	34, 35, 36, 37, 38
Southwest	1, 1A, 2, 3, 4, 5, 6, 7, 8, 9, 10
Spirit	20, 21, 22, 24, 26, 30
SSP	11, 12
Sun Country	51
United	38, 39, 40, 43, 44, 45, 46
US Airways	33, 34, 35
Virgin America	25
Volaris	20, 21, 22
West Jet	22, 24, 26



Source: Esri, DigitalGlobe, GeoEye, i-cubed, Earthstar Geographics, CNES/Airbus DS, USDA, USGS, AEX, Getmapping, Aerogrid, IGN, IGP, swisstopo, and the GIS User Community

Intentionally Left Blank