

Tenant Summary Sheet

Tenant:

Landmark Aviation

SIC Code: 4512, 4522

Primary Activity: Corporate General Aviation

Drainage Area: 1, 2, 3, 5, 6, 12

Nearest MS4 inlet: 200-1000 feet

Contact: Charlie Ferraro, General Manager

Email: cferraro@landmarkaviation.com, P: 619-298-7704, C: 713-315-7075, F: 619-598-7021

Secondary Contact: Clay White

C: 713-876-5393

Address: 2904 Pacific Highway
San Diego, CA 92101

Tenant Description and Primary Industrial Activities:

1. Hangar 1 is used for offices. Hangars 2, 3 and 4 are used for aircraft parking. Outside contractors come in to perform aircraft maintenances on ramp as needed.
2. Vehicle maintenance is performed outdoors by Landmark technicians.
3. Fueling truck filling station adjacent to southwest corner of hangar 4.
4. Underground storage tank containing 15,000 gallons of av gas located under the fueling area. A 1,500 gallon Aboveground Storage Tank (AST) located at filling station is empty and has never been used due to permitting issues. Spill unit containing kitty litter, shovels, and drums, is also located at the fueling station. Daily checks are performed on the fueling areas.
5. UST is filled by an outside company using tanker trucks, about twice per month.
6. Eleven aircraft refueling trucks are parked outdoors. Fuel storage in trucks is about 30,000 gallons per day.
7. Outdoor hazardous waste accumulation area is adjacent to material storage building, covered and on spill pallets.
8. Solvent wash station and tank is located on the porch of the material storage building.
9. Outdoor hose bib at Hangar 4 is not used for outdoor wash down.
10. Asbury Environmental collects hazardous wastes, waste oil and oily materials.
11. DHL is a subtenant of Landmark Aviation, and operates next to hanger 4 of Landmark Aviation. DHL parts are stored indoors. Landmark performs fueling for DHL aircraft. DHL performs general inspections once every two weeks.
12. ABX is contracted by DHL to perform maintenance for aircraft and GSE.
13. Integrated Airline Services (IAS) is contracted by DHL to provide manpower to perform cargo loading and unloading.
14. Some of DHL's wastes are stored outdoors in the shared Waste Accumulation Area with Landmark. All have secondary containment, but some do not have overhead cover. Heritage Environmental Services collects all of DHL's hazardous waste and waste oil.
15. GSE are washed at ASIG wash rack as needed.
16. Jet Wash washes planes once or twice every three months. Wash water is captured and properly disposed of.
17. Every other day GSE is fueled with red dye diesel or unleaded fuel. This fuel is stored in fueling trucks onsite and trucks are filled once a month from an outside fueler truck.
18. Aircraft lavatories are serviced by Landmark. Landmark disposes of lavatory waste at a triturator.
19. Landmark will begin using TKS fluid (a deicing fluid) and servicing planes with it.
20. Tenant uses the Airport Storm Water Management Plan and has a Hazardous Materials Business Plan. Tenant is in process of updating the Spill Prevention, Control, and Countermeasure Plan.

Tenant Summary Sheet

Tenant:

Landmark Aviation

Significant Materials Potentially Exposed to Storm Water:

Potential Pollutant Sources

Aircraft fueling
Aircraft maintenance
Aircraft sanitary services
Aircraft washing
Building/ grounds maintenance
Chemical storage
Equipment degreasing
Equipment fueling
Equipment maintenance
Equipment storage
Fluid leaks from aircraft
Fuel spills
Outdoor waste storage
Fuel storage
Vehicle fueling
Vehicle maintenance
Vehicle parking

Potential Pollutants

Fuel, Metals, Battery acid, Antifreeze,
Lavatory wastes, Oil and Grease, Solvents,
Lubricants, Paints, Cleaning solutions,
Trash, Dumpster wastes, Lavatory chemicals,
Metals,

Best Management Practices and Current Structural Controls:

The list below identifies the BMP categories and specific BMPs that are applicable to Landmark Aviation. Appendix B provides a description of each BMP category.

Applicable BMP Categories

Non-Storm Water Management
Outdoor Equipment Ops and Maintenance Areas
Aircraft, Ground Vehicle and Equipment Maintenance

Aircraft, Ground Vehicle and Equipment Fueling
Aircraft, Ground Vehicle and Equipment Cleaning
Outdoor Loading/Unloading of Materials
Outdoor/Indoor Material Storage
Waste Handling and Disposal
Building and Grounds Maintenance
Employee Training
Lavatory Service Operation

Potable Water System Flushing
Parking Lots
Housekeeping
Safer/Alternative Products
Spill Prevention, Control, and Clean-up

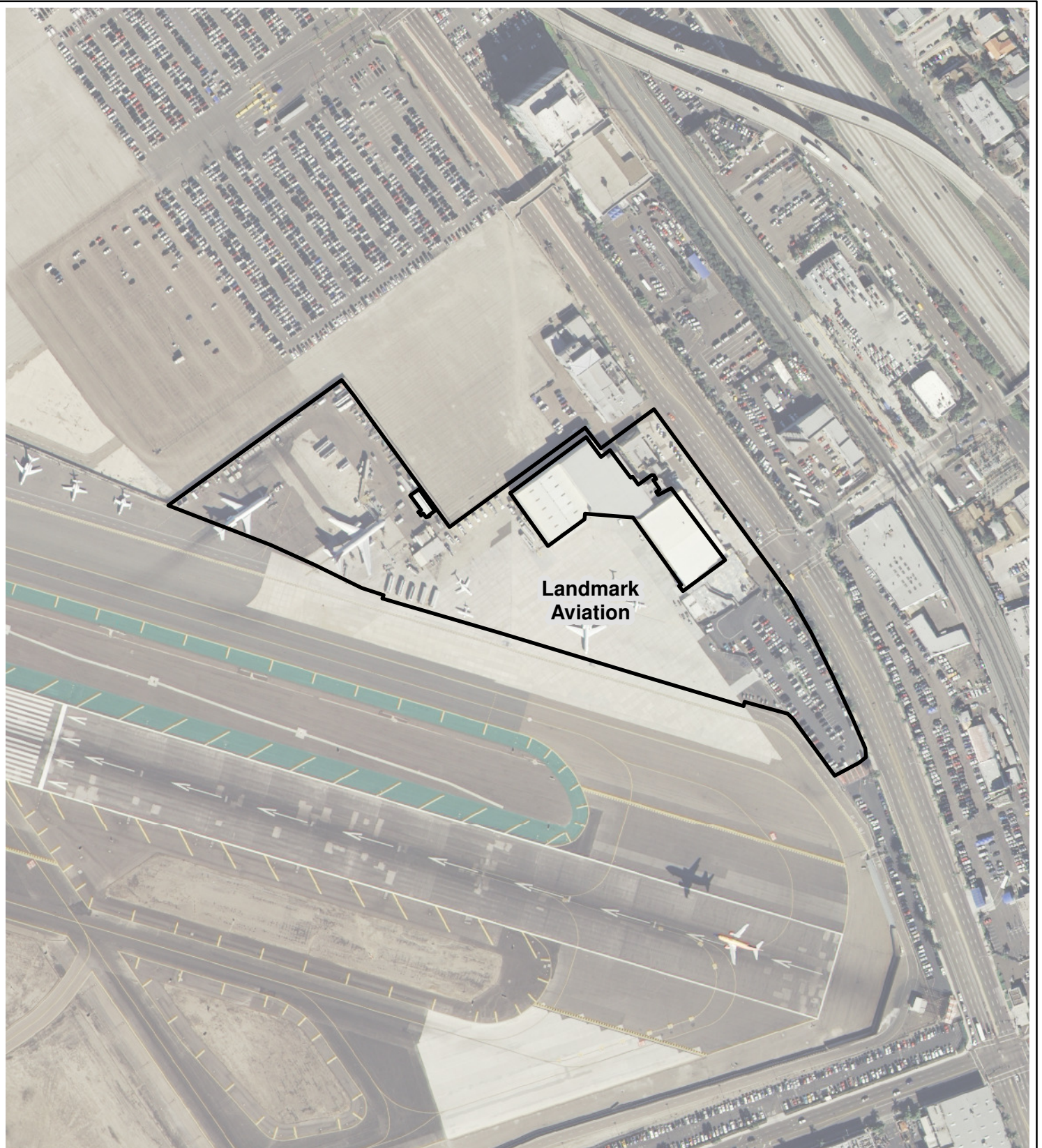
BMP Number

SC01 - 1, 2, 4
SC02A - 2, 1
SC02B - 10, 3, 5, 8, 1, 11, 12, 13, 2, 4, 6,
7, 9
SC03 - 7, 1, 10, 11, 2, 3, 4, 5, 6, 8, 9
SC04 - 2, 1, 3, 4, 5, 6, 7, 8
SC06 - 3, 1, 2, 4, 6, 7
SC07 - 12, 2, 3, 8, 1, 10, 11, 6, 7, 9
SC08 - 3, 5, 1, 10, 11, 12, 14, 2, 4, 6, 7,
SC09 - 1, 2, 3
SC10 - 1, 2, 3, 4
SC11 - 4, 10, 3, 5, 7, 8, 9

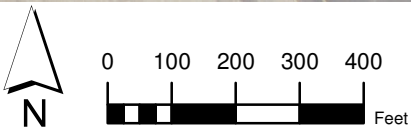
SC14 - 1, 2, 3
SC16 - 1, 12, 2, 6
SC18 - 1, 4, 5, 2, 3, 6, 7, 8, 9
SC19 - 2, 1
SR01 - 6, 8, 1, 2, 3, 4, 5, 7, 9

Structural control measures used at Landmark Aviation:

Concrete secondary containment around refueling truck filling station to contain leaks and prevent contact with stormwater.



Landmark
Aviation



PROJECT NO.:	5013-11-0003
DATE:	November 2011
DRAWN BY:	RMH
CHECKED BY:	AA

MACTEC
MACTEC Engineering and Consulting, Inc.

**Landmark Aviation
Operating Areas**
San Diego International Airport

FIGURE
E-19