

Tenant Summary Sheet

Tenant:

Allied Aviation

SIC Code: 4581

Primary Activity: Fuel Storage

Drainage Area: 6, 7

Nearest MS4 inlet: < 200 feet

Contact: Nelson Kelly, General Manager

E: nelson.kelly@alliedaviation.com , P: 619-574-7808, C: 619-921-4883, F: 619-574-7810

Address: 3698-C Pacific Highway

San Diego, CA 92111

Tenant Description and Primary Industrial Activities:

1. Allied Aviation main office is located in the North Ramp Area next to the ARFF station. A second "remote" fueling facility is located near the airport cargo area.
2. The Fuel Storage Facility has the following:
 - a. Three dual-position jet fuel unloading islands with spill containment. These pumps are used only as emergency backups.
 - b. Two 1,000,000-gallon jet fuel ASTs within secondary containment.
 - c. One 15,000-gallon diesel underground storage tank (UST).
 - d. One 15,000-gallon auto gas UST.
 - e. A diesel/auto gas loading/unloading island with spill containment.
 - f. One 3,000-gallon waste fuel UST.
 - g. An equipment pad with spill containment.
 - h. A foam equipment building with a 1,500-gallon 3% aqueous foam concentrate AST.
 - i. A 12,000-gallon oil/water separator includes an 8,000-gallon holding tank to treat fuel spills.
3. The Remote Fueling Facility, operated by Allied Aviation and used by ASIG to load fuel trucks, has the following:
 - a. Four single-position refueler loading islands with spill containment.
 - b. One 12,000-gallon underground waste water tank.
 - c. One 3,000-gallon underground reclaimed fuel tank.
 - d. An underground pipeline conveying fuel from the Fuel Storage Facility.
4. A trailer unit or mini vac-truck of 250-gallon capacity is available to clean up spills.
5. NRC is the designated Oil Spill Response Organization (OSRO) to provide cleanup services in case of a spill.
6. ASIG and American Airlines trucks take Jet-A fuel at the Remote Fueling Facility and then take fuel to the gates. Jet fuel comes from 10th Avenue by an underground pipeline to two 1,000,000-gallon ASTs at the Fuel Storage Facility. An annual survey is performed on leak detection systems.
7. The only equipment maintenance performed is on the nozzle valves at the loading islands and the valves on pumps. Pipes at loading/unloading islands are painted.
8. At the Fuel Storage Facility, pig mats are placed over the storm drains that are not linked to the OWS, this is done only during fueling activities.
9. The emergency eye wash station is tested monthly and water is allowed to evaporate and does not reach the storm drain. Fire hydrants at the foam house are flush-tested annually producing a foam discharge. A bermed area is created in the parking lot and all discharge goes into the drains connected to the OWS. IPS performs this task.
10. The only outdoor area that is cleaned is the concrete pad at the loading islands in the Remote Fueling Facility. The area is steam cleaned, and the discharge enters the 12,000-gallon underground wastewater tank. Filter Recycling collects and disposes of wastewater. NRC picks up wastes.
11. The Firefighting equipment near the two 1-million gallon tanks are tested annually with water only to make sure adequate water pressure is available. The water is discharged into the storm drains. BMPs have been recommended to prevent discharge carrying any potential pollutants into the storm drain.
12. At the foam house, the test ports inside the house are used to test the water to foam ratio. IPS performs testing and berms testing area, captures, and disposes of discharge.
13. Tenant has a Storm Water Pollution Prevention Plan, Spill Prevention, Control, and Countermeasure Plan, and Facility Response Plan. Tenant filed a NOI to be covered under the NPDES general permit and has WDID # 9375012120.

Tenant Summary Sheet

Tenant:

Allied Aviation

Tenant Description and Primary Industrial Activities:

13. Filter Recycling services the OWS and the 12,000-gallon wastewater UST annually and collects all hazardous wastes. Annual sampling is done on the effluent side of the OWS and on the wastewater at the Remote Fueling Facility.

Significant Materials Potentially Exposed to Storm Water:

Potential Pollutant Sources

Building/ grounds maintenance
Chemical storage
Drainage system maintenance
Equipment maintenance
Equipment painting
Fire fighting equipment testing
Fuel storage
Loading of jet fuel into refueling trucks at loading islands
Loading/ offloading of gasoline or diesel
Offloading of off-spec jet fuel from a 3,000 gallon UST
Offloading of water/ fuel mixture from a 3,000 gallon UST
Outdoor waste storage
Pesticide/ herbicide usage
Vehicle parking

Potential Pollutants

Paints, Herbicides, Fuel, Sediment, Fuel, Solvents, Bulk auto gas and diesel, Pesticides/Herbicides/Fertilizers, Fire Fighting Foam (AFFF), Oil and Grease, Paints, Lubricants, Metals, Trash, Sump fuel, Antifreeze, Cleaning solutions, Solvents,

Best Management Practices and Current Structural Controls:

The list below identifies the BMP categories and specific BMPs that are applicable to Allied Aviation. Appendix B provides a description of each BMP category.

Applicable BMP Categories

Non-Storm Water Management
Outdoor Equipment Ops and Maintenance Areas
Aircraft, Ground Vehicle and Equipment Maintenance
Aircraft, Ground Vehicle and Equipment Fueling
Outdoor Loading/Unloading of Materials
Outdoor/Indoor Material Storage
Waste Handling and Disposal
Building and Grounds Maintenance
Employee Training
Fire Fighting Foam Discharge
Parking Lots
Storm Drain Maintenance
Housekeeping
Safer/Alternative Products
Spill Prevention, Control, and Clean-up
Treatment Controls

BMP Number

SC01 - 1, 2
SC02A - 2, 1
SC02B - 3, 5, 1, 11, 13, 2, 4, 6, 9
SC03 - 1, 10, 11, 2, 3, 4, 5, 6, 8, 9
SC06 - 1, 2, 3, 4, 5, 6, 7
SC07 - 1, 10, 11, 12, 3, 6, 7, 8, 9
SC08 - 5, 1, 10, 11, 12, 14, 2, 3, 4, 6, 7,
SC09 - 3
SC10 - 1, 2, 3, 4
SC13 - 1, 2, 3, 4, 5
SC16 - 1, 12, 2, 6
SC17 - 1
SC18 - 4, 1, 2, 3, 5, 6, 7, 8, 9
SC19 - 1, 2
SR01 - 6, 1, 10, 2, 3, 4, 5, 7, 8, 9
TC01 - 1, 2, 3, 4

Tenant Summary Sheet

Tenant:

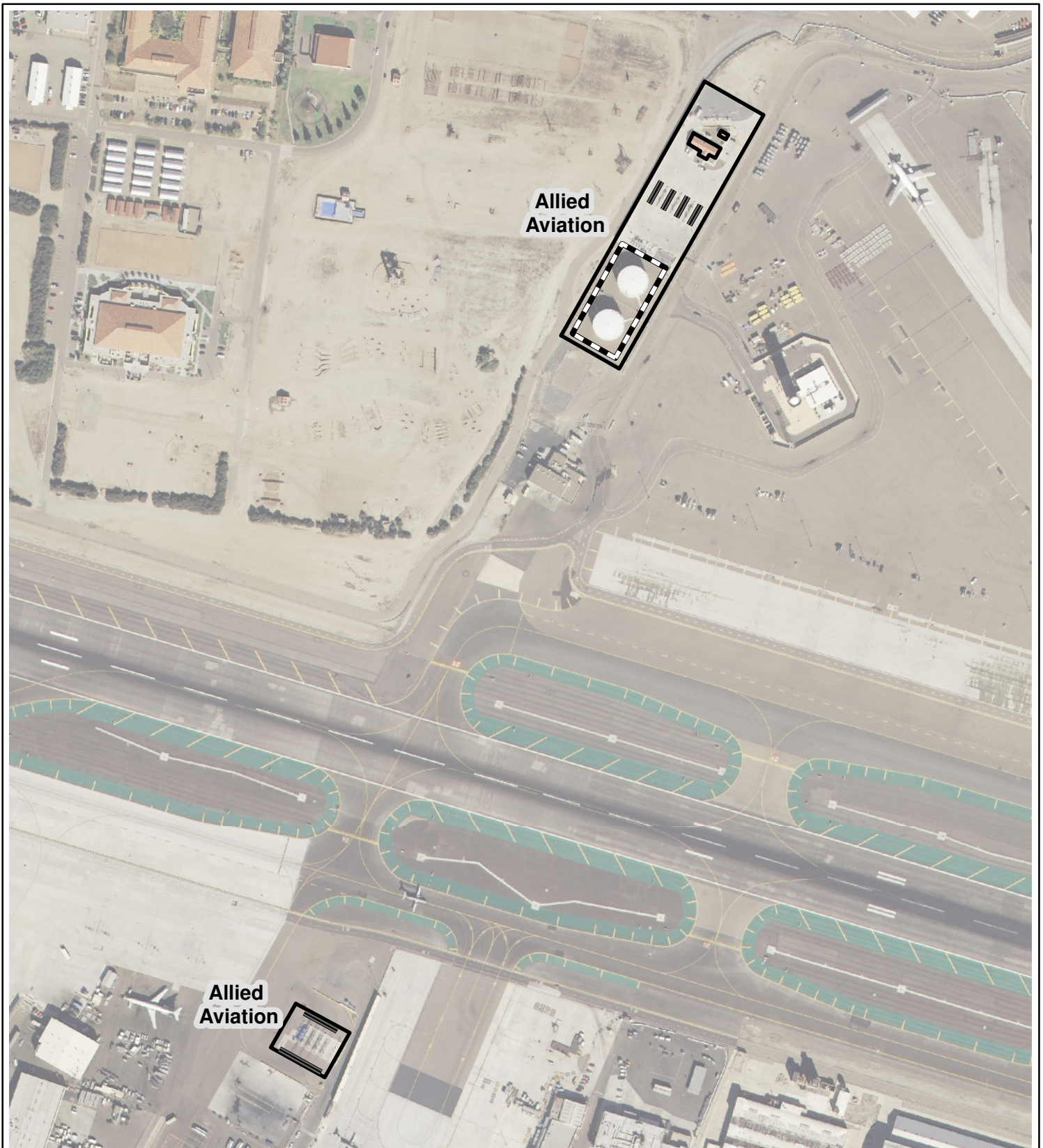
Allied Aviation

Structural control measures used at Allied Aviation:

Fueling areas are sloped to divert water into oil water separator.



Concrete secondary containment around storage tanks.

Concrete curbing to direct drainage.



0 100 200 300 400 500
Feet

Legend

-  Berms
-  Secondary Containment Area

PROJECT NO.:
5013-11-0003

DATE:
November 2011

DRAWN BY:
RMH

CHECKED BY:
AA



MACTEC

MACTEC Engineering and Consulting, Inc.

**Allied Aviation
Operating Areas**
San Diego International Airport

FIGURE

E-4