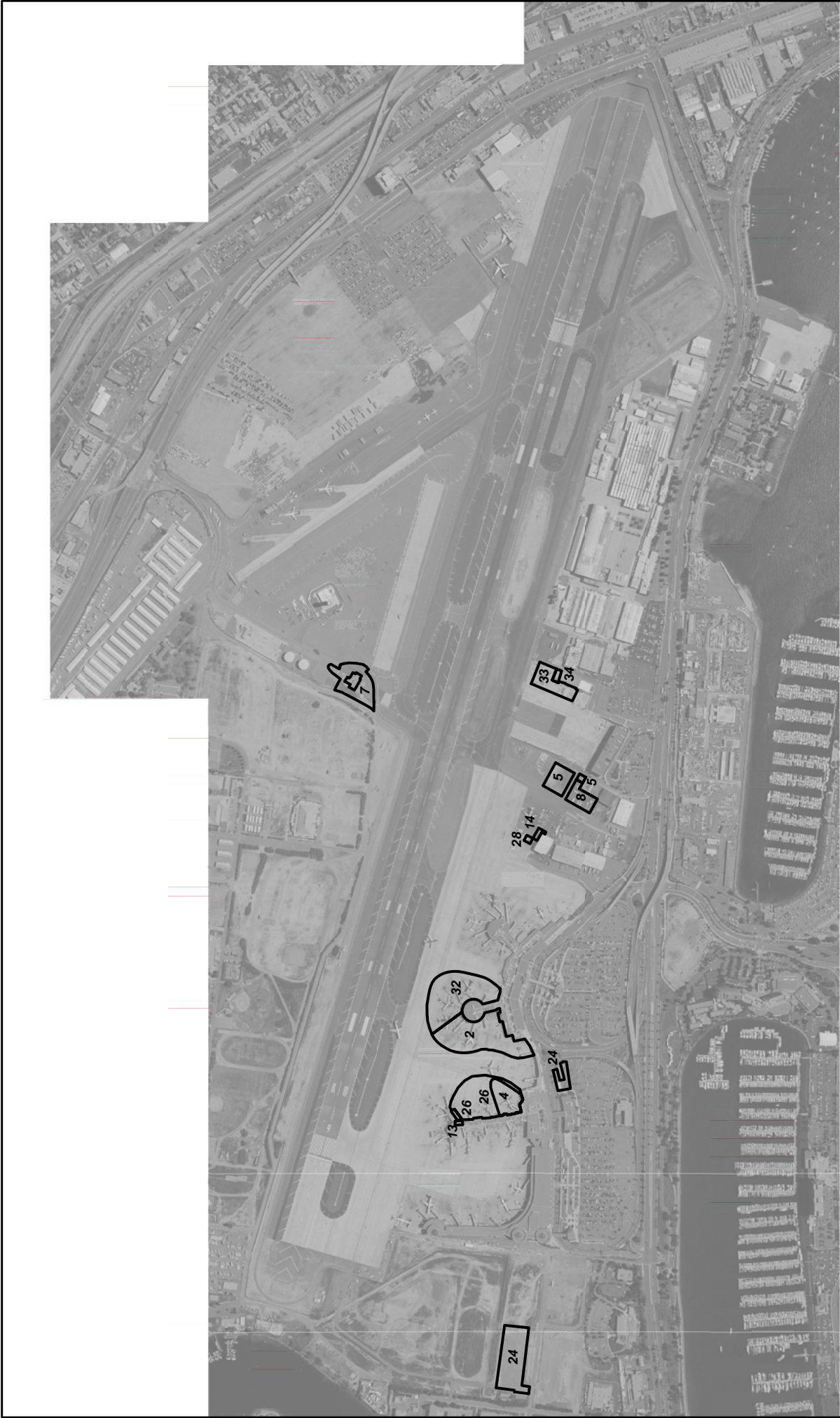


## Appendix B – Best Management Practices (BMPs)

BMP SC04	AIRCRAFT, GROUND VEHICLE, AND EQUIPMENT CLEANING	
<b>PURPOSE:</b>  Prevent or reduce the discharge of pollutants to storm drains from aircraft, vehicle, and equipment washing, and equipment degreasing.		<b>TARGETED ACTIVITIES:</b>  ➔ Aircraft Washing ➔ Vehicle Washing ➔ Equipment Washing ➔ Equipment Degreasing
<b>POLLUTION PREVENTION:</b>  <div style="display: flex;"> <div style="flex: 1;"> <input type="checkbox"/> Store significant cleaning materials in leak-free containers and within areas of secondary containment.   <input type="checkbox"/> Use biodegradable, non-toxic cleaning solutions.   <input type="checkbox"/> <b>DO NOT DISCHARGE WASTE WASH WATER OR CLEANING AGENTS TO A CATCH BASIN OR STORM DRAIN.</b> Notify Airport Operations (619-400-2710) and the Airport Authority Environmental Affairs Department (619-400-2784) if any non-storm water discharges from cleaning activities to the storm drain system are observed.             </div> <div style="flex: 1;"> <b>POLLUTANTS of CONCERN:</b>                 ➔ Cleaning Solutions                ➔ Oil and Grease                ➔ Solvents                ➔ Vehicle Fluids                ➔ Metals             </div> </div>		
<b>OPERATIONS:</b> <b>Sub-BMPs</b> <ul style="list-style-type: none"> <li>- 01 <input type="checkbox"/> Keep vehicles, equipment, and washing areas clean and free of waste.</li> <li>- 02 <input type="checkbox"/> Use dry washing and surface preparation techniques where feasible.</li> <li>- 03 <input type="checkbox"/> Wash areas should not be located directly in the path of storm drains.</li> <li>- 04 <input type="checkbox"/> Use pigs and cover mats to cover all catch basins in the surrounding area to contain the wash water during washing activities.</li> <li>- 05 <input type="checkbox"/> Perform all washing activities in designated areas that capture or divert all wash water to a structural treatment control BMP, sanitary sewer or dead end sump with pump.</li> <li>- 06 <input type="checkbox"/> Perform routine visual observations of washing activities and inspect nearby storm drains to detect discharges from cleaning activities.</li> <li>- 07 <input type="checkbox"/> Filter and recycle wash water where possible. If not possible, collect and properly dispose of the contained wash water.</li> <li>- 08 <input type="checkbox"/> Remove all excess materials such as drippings and residue by using vacuum methods. Properly dispose of all waste materials.</li> </ul>		<b>APPLICABLE TENANTS/ DEPARTMENTS:</b>  ➔ Alaska ➔ Aloha ➔ American Airlines ➔ American Eagle ➔ ARFF ➔ ASIG ➔ BAX Global ➔ Delta ➔ DHL ➔ Elite Line Services ➔ Exec Air ➔ Express Jet ➔ HMS Host ➔ Jet Wash ➔ Jimsair ➔ LPI ➔ Northwest ➔ SDCRAA ➔ Sky West ➔ Southwest ➔ SPC Airport Services ➔ United ➔ UPS ➔ US Airways

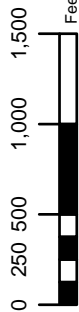
**Appendix B – Best Management Practices (BMPs)**

<b>STRUCTURAL TREATMENT BMPs:</b> Refer to BMP TC01 for information on structural treatment BMPs.		
<b>AUTHORIZED AIRCRAFT, GROUND VEHICLE AND EQUIPMENT CLEANING:</b>		
<input type="checkbox"/>	Use only the designated areas for aircraft, ground vehicle and equipment cleaning as shown in the attached map.	
Date:		Version: 1.0



**Facilities Legend**

- |                       |                          |                |                 |
|-----------------------|--------------------------|----------------|-----------------|
| 2 - Alaska            | 8 - ASIG                 | 26 - Northwest | 34 - US Airways |
| 4 - Aloha             | 13 - Elite Line Services | 28 - SDCRAA    |                 |
| 5 - American Airlines | 14 - ExecAir             | 32 - United    |                 |
| 7 - ARFF              | 24 - Lpi                 | 33 - UPS       |                 |



PROJECT NO.:	5012-08-0002
DATE:	February 2008
DRAWN BY:	SKR
CHECKED BY:	



**San Diego  
International Airport**

**BMP SC-04  
Aircraft, Ground Vehicle,  
and Equipment Cleaning**

FIGURE  
SC-04