

## Appendix B – Best Management Practices (BMPs)

BMP SC03	AIRCRAFT, GROUND VEHICLE, AND EQUIPMENT FUELING	
<b>PURPOSE:</b> To prevent fuel spills and leaks, and reduce their impacts to storm water.		<b>TARGETED ACTIVITIES:</b> ➔ Aircraft Fueling ➔ Vehicle Fueling ➔ Equipment Fueling
<b>POLLUTION PREVENTION:</b> Implement the following pollution prevention practices and BMPs to prevent fuel discharges to the storm water collection system: <ul style="list-style-type: none"> <li><input type="checkbox"/> Use pigs/mats over storm drains during fueling activities.</li> <li><input type="checkbox"/> Fuel pumps should be posted with signs stating “No Topping Off” to prevent overflow.</li> <li><input type="checkbox"/> Use absorbent materials and spot cleaning for small spills, and properly dispose of the spill response materials.</li> <li><input type="checkbox"/> Properly dispose of any fuel spills and leaks. If feasible, collect any fuel spills through vacuum equipment / trucks.</li> <li><input type="checkbox"/> Report leaking vehicles to fleet maintenance.</li> <li><input type="checkbox"/> Develop and implement a Spill Prevention, Control and Countermeasure (SPCC) Plan if required under guidelines set forth in 40 CFR, Section 112.</li> <li><input type="checkbox"/> <b>DO NOT DISCHARGE FUEL TO A CATCH BASIN OR STORM DRAIN.</b> Notify Airport Operations (619-400-2710) and the Airport Authority Environmental Affairs Department (619-400-2784) if any fuel spill or leak is observed.</li> </ul>		<b>POLLUTANTS of CONCERN:</b> ➔ Fuel ➔ Metals ➔ Oil and Grease ➔ Organics
<b>OPERATIONS:</b> <b>Sub-BMPs</b> <ul style="list-style-type: none"> <li>- 01 <input type="checkbox"/> Perform aircraft, ground vehicle and equipment fueling in the designated areas that are covered, bermed, enclosed, or sloped/positioned away from the MS4.</li> <li>- 02 <input type="checkbox"/> Fueling areas should not be located directly in the path of storm drains.</li> <li>- 03 <input type="checkbox"/> Label, regularly inspect and keep in good condition all tanks, piping and valves.</li> <li>- 04 <input type="checkbox"/> Store absorbent booms, spill kits, or vacuum equipment in fueling areas or on fueling vehicles.</li> <li>- 05 <input type="checkbox"/> Regularly inspect fueling areas.</li> <li>- 06 <input type="checkbox"/> Monitor major fueling operations.</li> <li>- 07 <input type="checkbox"/> Use secondary containment or cover when transferring fuel from a tanker truck to a fuel tank.</li> </ul>		<b>APPLICABLE TENANTS/ DEPARTMENTS:</b> ➔ Aero Mexico ➔ Alaska Airlines ➔ Allied Aviation ➔ Aloha ➔ American Airlines ➔ American Eagle ➔ ARFF ➔ ASIG ➔ BAX Global ➔ Continental ➔ Delta ➔ DHL Express ➔ Elite Line Service ➔ Exec Air ➔ Express Jet ➔ FedEx ➔ Frontier

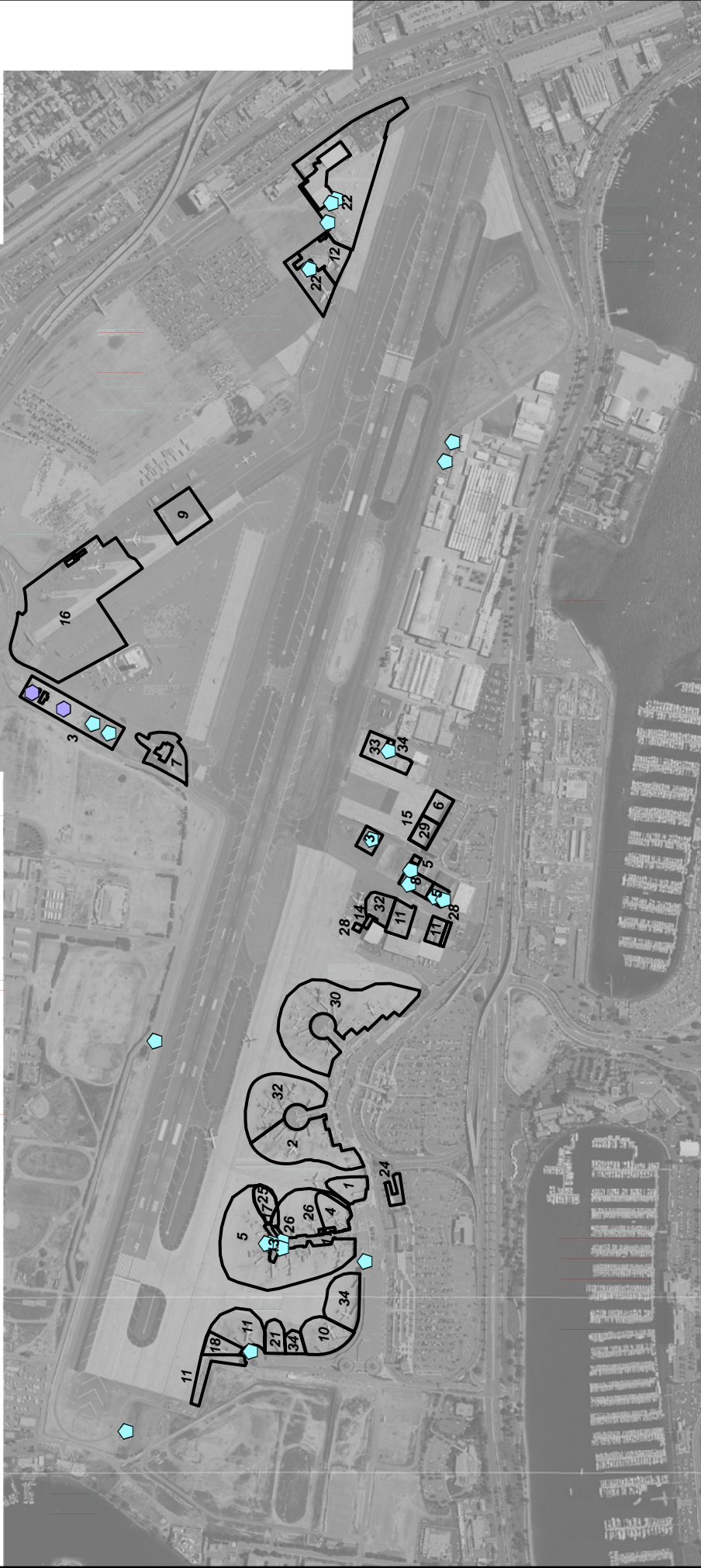
## Appendix B – Best Management Practices (BMPs)

- 08 <input type="checkbox"/>  - 09 <input type="checkbox"/>  - 10 <input type="checkbox"/>  - 11 <input type="checkbox"/>	Use leak detection, overfill protection and spill prevention devices for tanks and piping.  Use automatic shut-off mechanisms for fuel tankers and hose connections.  Do not top off fuel tanks.  Restrict access to fuel tanks and fueling vehicles.	➔ Hawaiian ➔ Jet Blue ➔ Jimsair ➔ LPi ➔ Midwest ➔ Northwest ➔ SDCRAA ➔ Sky West ➔ Southwest ➔ SPC ➔ United ➔ UPS ➔ US Airways
<b>STRUCTURAL TREATMENT BMPs:</b> Refer to BMP TC01 for information on structural treatment BMPs.		
<b>AUTHORIZED AIRCRAFT, GROUND VEHICLE AND EQUIPMENT FUELING LOCATIONS:</b>		
<input type="checkbox"/>	Use only the designated areas for aircraft, ground vehicle and equipment fueling as shown in the attached map.	
Date:		Version: 1.0

Legend

Fueling

Fuel Storage



Facilities Legend

0	250	500	1,000	1,500	Feet	13 - Elite Line Services	17 - Frontier	24 - Lpi	29 - SkyWest	34 - US Airways
						14 - ExecAir	18 - Hawaiian	25 - Midwest	30 - Southwest	
						15 - Express Jet	21 - JetBlue	26 - Northwest	32 - United	
						16 - FedEx	22 - Jimsair	28 - SDCRAA	33 - UPS	

PROJECT NO.:	5012-08-0002
DATE:	February 2008
DRAWN BY:	SKR
CHECKED BY:	



MACTEC

MACTEC Engineering and Consulting Inc.

San Diego  
International Airport

BMP SC-03  
Aircraft, Ground Vehicle,  
and Equipment Fueling