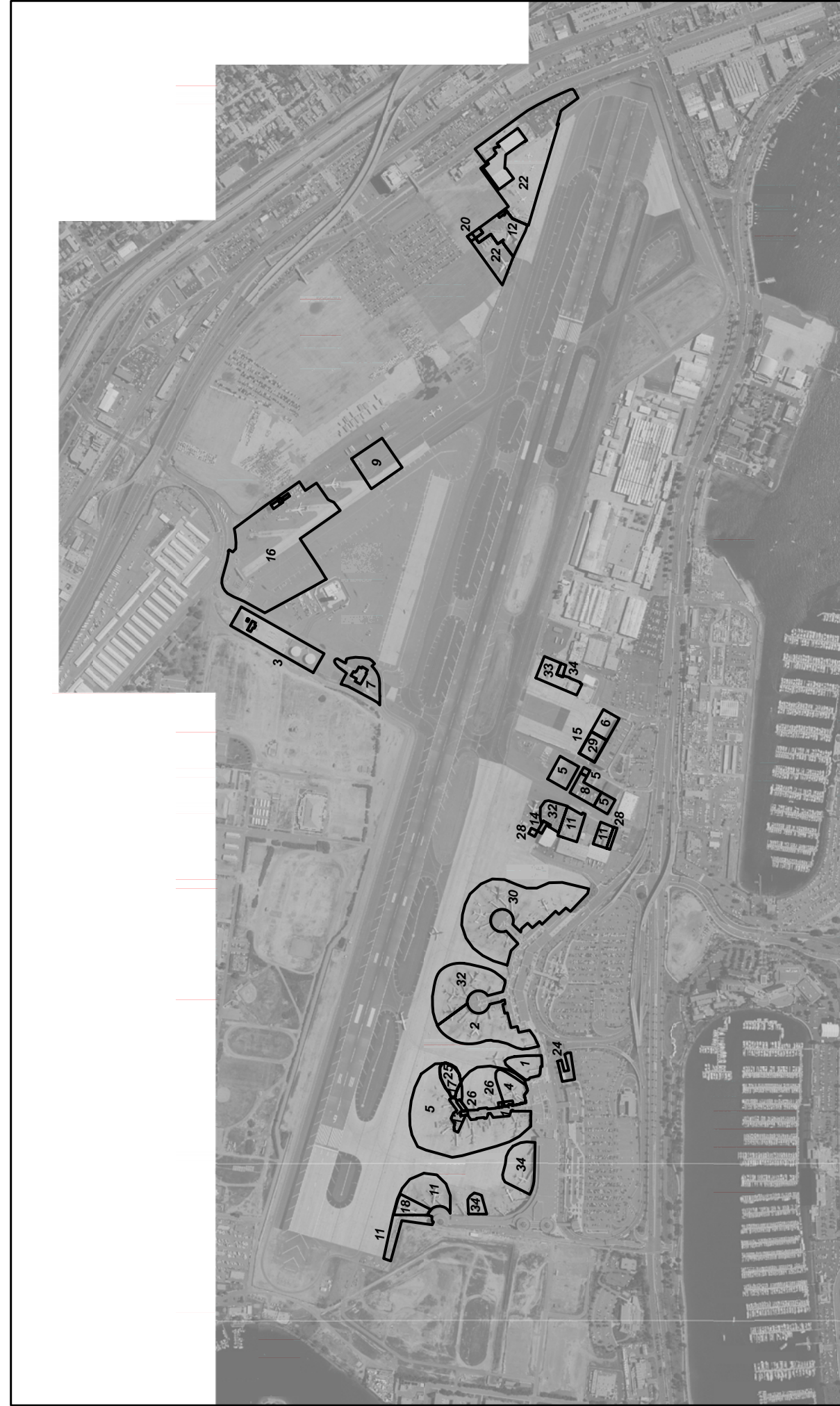


## Appendix B – Best Management Practices (BMPs)

BMP SC02B	AIRCRAFT, GROUND VEHICLE, AND EQUIPMENT MAINTENANCE	
<b>PURPOSE:</b> To prevent or reduce the discharge of pollutants to storm water from any type of aircraft, vehicle, or equipment maintenance and repair, including ground vehicle and equipment painting/stripping and floor washdowns.		<b>TARGETED ACTIVITIES:</b> ➔ Aircraft Maintenance ➔ Vehicle Maintenance ➔ Equipment Maintenance
<b>POLLUTION PREVENTION:</b> Implement the following pollution prevention practices and BMPs to prevent discharges of pollutants to the storm water collection system: <ul style="list-style-type: none"> <li><input type="checkbox"/> Provide covered maintenance areas when designing new facilities or upgrading existing facilities. Utilize indoor areas, lean-tos, or portable covers.</li> <li><input type="checkbox"/> Perform the activity during dry periods.</li> <li><input type="checkbox"/> Use non-toxic, biodegradable chemicals or products for maintenance, minimize or eliminate the use of solvents and substitute materials with less hazardous properties where feasible.</li> <li><input type="checkbox"/> Recycle or properly dispose of the following: greases, oils, antifreeze, brake fluid, cleaning solutions, hydraulic fluid, batteries and transmission fluid. Drain and crush oil filters and oil containers before recycling or disposal. Store crushed oil filters, empty lubricant containers, and cracked batteries in a leak-proof covered container.</li> <li><input type="checkbox"/> <b>DO NOT HOSE DOWN WORK AREAS TO THE STORM DRAIN SYSTEM.</b> Notify Airport Operations (619-400-2710) and the Airport Authority Environmental Affairs Department (619-400-2784) if there is any evidence of the disposal of solvents, cleaning solutions or other materials to the storm drain, or hosing down of work areas.</li> </ul>		<b>POLLUTANTS of CONCERN:</b> ➔ Battery Acid ➔ Fuel ➔ Metals ➔ Nutrients ➔ Oil and Grease ➔ Organics ➔ Paint ➔ Sediments ➔ Solvents/Cleaning Solutions ➔ Vehicle Fluids
<b>OPERATIONS:</b> <b>Sub-BMPs</b> <ul style="list-style-type: none"> <li>- 01 <input type="checkbox"/> Employees are trained in safe vehicle and equipment operations and maintenance.</li> <li>- 02 <input type="checkbox"/> Aircraft, vehicle and equipment maintenance areas should not be located directly in the path of storm drains.</li> <li>- 03 <input type="checkbox"/> Perform maintenance of aircraft, ground vehicles and equipment in designated areas that are either indoors or are covered, bermed, enclosed, or sloped/positioned away from the MS4.</li> <li>- 04 <input type="checkbox"/> Perform regular equipment inspection and testing.</li> <li>- 05 <input type="checkbox"/> Inspect aircraft, vehicles and equipment on a regular basis for fluid leaks. Place drip pans under leaks as needed.</li> <li>- 06 <input type="checkbox"/> Maintain aircraft, vehicles and equipment in good condition to prevent or correct any leakage of oil or other fluids.</li> <li>- 07 <input type="checkbox"/> Use drip pans during maintenance.</li> </ul>		<b>APPLICABLE TENANTS/ DEPARTMENTS:</b> ➔ Aero Mexico ➔ Alaska Airlines ➔ Allied Aviation ➔ Aloha ➔ American Airlines ➔ American Eagle ➔ ARFF ➔ ASIG ➔ BAX Global ➔ Delta ➔ DHL Express ➔ Elite Line Service ➔ Exec Air ➔ Express Jet ➔ FedEx ➔ Frontier ➔ Hawaiian ➔ Jet Wash

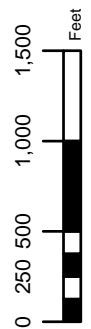
## Appendix B – Best Management Practices (BMPs)

<p>- 08 <input type="checkbox"/></p> <p>- 09 <input type="checkbox"/></p> <p>- 10 <input type="checkbox"/></p> <p>- 11 <input type="checkbox"/></p> <p>- 12 <input type="checkbox"/></p> <p>- 13 <input type="checkbox"/></p>	<p>Do not leave drip pans containing fluids or other open containers lying around. Regularly transfer fluids for recycling or proper disposal.</p> <p>Minimize the use of solvents or use less toxic solvents whenever possible. If solvents cannot be avoided, clean or drain parts in self-contained sinks or drum units, and check those units regularly for leaks.</p> <p>Store mechanical parts, equipment and vehicles awaiting repair under cover and away from storm drains.</p> <p>Store spill response materials in maintenance areas and on maintenance vehicles. Adequately collect/remove absorbent materials from area after use and dispose of them in an appropriate manner.</p> <p>Remove fluids and batteries from salvage vehicles and equipment and dispose of properly.</p> <p>Properly dispose of obsolete and inoperable vehicles and equipment.</p>	<p>➔ Jimsair</p> <p>➔ LPi</p> <p>➔ Midwest</p> <p>➔ Northwest</p> <p>➔ SDCRAA</p> <p>➔ Sky West</p> <p>➔ Southwest</p> <p>➔ United</p> <p>➔ UPS</p> <p>➔ US Airways</p>
<p><b>STRUCTURAL TREATMENT BMPs:</b> Refer to BMP TC01 for information on structural treatment BMPs.</p>		
<p><b>AUTHORIZED AIRCRAFT, GROUND VEHICLE AND EQUIPMENT MAINTENANCE LOCATIONS:</b></p>		
<p><input type="checkbox"/></p>	<p>Use only the designated areas for aircraft, ground vehicle and equipment maintenance as shown in the attached map.</p>	
<p>Date:</p>		<p>Version: 1.0</p>



**Facilities Legend**

- |                     |                       |                          |                  |                     |                |                 |
|---------------------|-----------------------|--------------------------|------------------|---------------------|----------------|-----------------|
| 1 - AeroMexico      | 5 - American Airlines | 9 - BAX Global           | 14 - ExecAir     | 18 - Hawaiian       | 25 - Midwest   | 30 - Southwest  |
| 2 - Alaska          | 6 - American Eagle    | 11 - Delta               | 15 - Express Jet | 20 - Jet Wash, Inc. | 26 - Northwest | 32 - United     |
| 3 - Allied Aviation | 7 - ARFF              | 12 - DHL                 | 16 - FedEx       | 22 - Jimsair        | 28 - SDCRAA    | 33 - UPS        |
| 4 - Aloha           | 8 - ASIG              | 13 - Elite Line Services | 17 - Frontier    | 24 - Lpi            | 29 - SkyWest   | 34 - US Airways |



PROJECT NO.:	5012-08-0002
DATE:	February 2008
DRAWN BY:	SKR
CHECKED BY:	

**San Diego  
International Airport**



**BMP SC-02B  
Aircraft, Ground Vehicle,  
and Equipment Maintenance**

FIGURE  
**SC-02B**