

Frontier Airlines

SIC Codes	4512, 4522	Contact Information	
Primary Activity	Passenger Carrier	Fred Jones	Manager
Drainage Areas	08	P 6195428318	C 7185703794
Nearest MS4 Inlet	200 - 1000 ft.	fjones@wfs.aero	
Address	3665 North Harbor Dr. #223 San Diego, CA 92101	Samuel Schneider	Manager - Regional
		P 9545910868	
		samuel.schneider@flyfrontier.com	

Facility Description and Activities

1. Pacific Aircraft Maintenance (Flightline) does maintenance on Frontier's GSE and aircraft.
2. No cargo operations are performed in San Diego.
3. Pacific Aircraft Maintenance (Flightline) conducts minor aircraft maintenance while parked on ramp.
4. One hazardous materials locker is located outside of the bag room.
5. GSE equipment is a combination of gas, diesel, and propane. Menzies fuels gas and diesel GSE. Amerigas provides the propane.
6. Frontier has no electric vehicles.
7. Drip pans are used on an as-needed basis.
8. Sweeping is done every time before a flight comes in, every time a flight goes out, and on an as-needed basis.
9. The Airport Authority performs all ramp painting.
10. All oils and fluids used for maintenance are stored at Flightline Mechanics in the cargo shop area.
11. WFS is a vendor for Frontier for above and below wing services in SAN. Half of the ground equipment is owned by WFS and half is owned by Frontier. The WFS manager is Fred Jones.
12. Frontier operates out of Gate 12. Frontier 95% use, Cartwright 5% use.
13. Frontier uses alternative products where possible: Simple Green products, and products identified as biodegradable.

Significant Materials/Activities Potentially Exposed to Storm Water

Potential Pollutant Sources

Aircraft sanitary services
Cargo handling
Equipment storage
Fluid leaks
Fuel spills, Fuel transfer
Material loading/unloading
Outdoor waste storage
Potable water flushing
Tank fuel transfer
Trash collection

Potential Pollutants

Anti Freeze
Battery Acid
Cleaning Solutions
Degreasers (Citrus based)
Fuel
Fuel (Diesel)
Fuel (Gas)
Fuel (Jet)
Hydraulic Fluids
Lavatory Chemicals
Lavatory Wastes
Lubricants
Oil & Grease
Paints
Recyclables
Trash

Best Management Practices Applicable to Facility

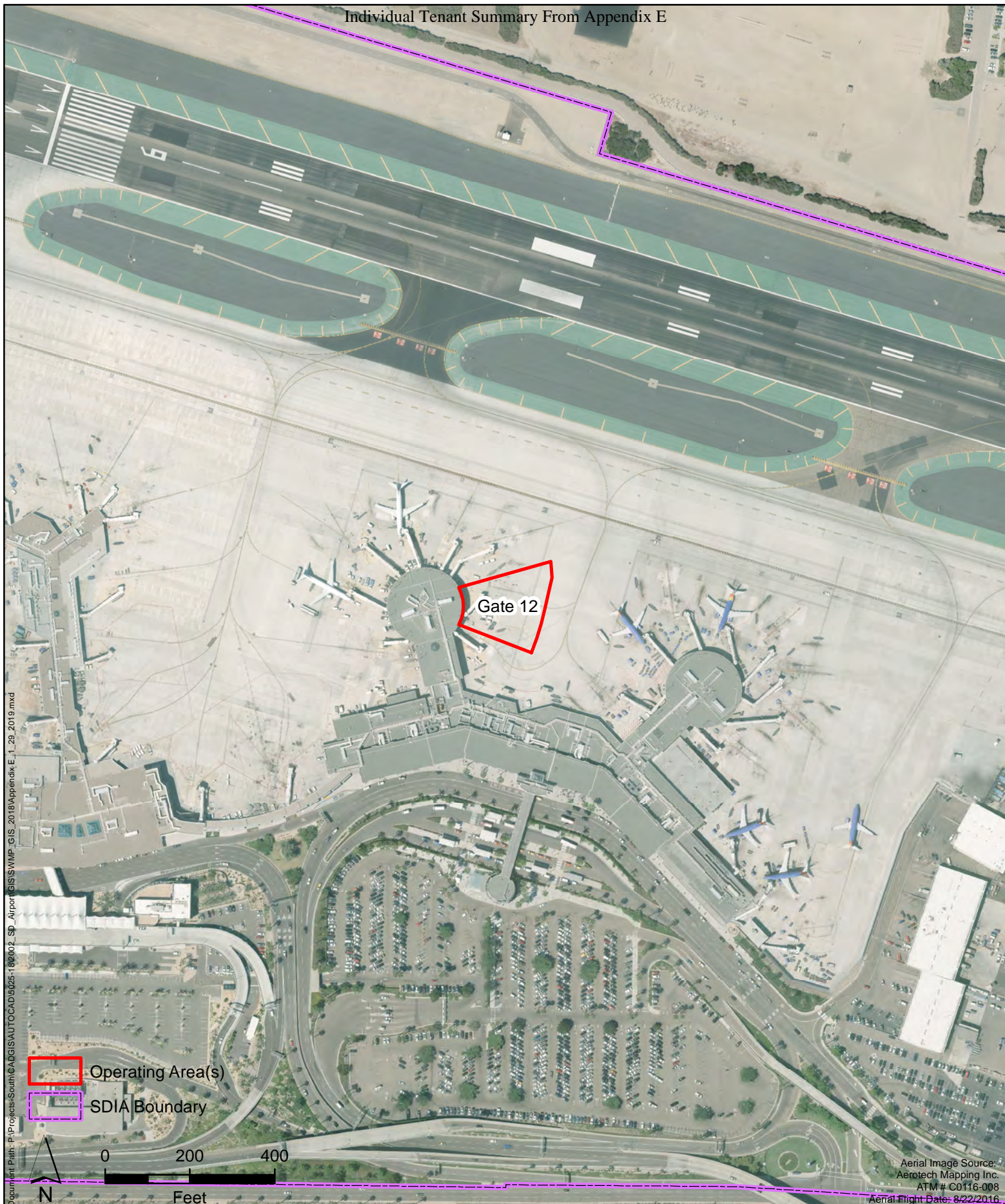
Activities

BMPs

Individual Tenant Summary From Appendix E

Non-Storm Water Management	SC01 - 1, 2, 4, 7
Outdoor Equipment Ops Maintenance Areas	SC02A - 1, 2
Aircraft, Ground Vehicle & Equipment Maintenance	SC02B - 1, 2, 3, 4, 5, 6, 7, 8, 9, 10, 11, 13
Aircraft, Ground Vehicle & Equipment Fueling	SC03 - 1, 2, 4, 5, 6, 8
Outdoor Loading/Unloading of Materials	SC06 - 1, 2, 3, 4, 6, 7
Outdoor Material Storage	SC07 - 1, 2, 3, 7, 11, 12, 13
Waste Handling & Disposal	SC08 - 1, 2, 3, 4, 5, 8, 9, 10, 11, 12
Employee Training	SC10 - 1, 2, 3, 4
Lavatory Service Operation	SC11 - 3, 4, 5, 6, 7, 8, 9, 10, 11
Potable Water System Flushing	SC14 - 1, 2
Housekeeping	SC18 - 1, 2, 3, 4, 5, 6, 7, 8, 9
Safer/Alternative Products	SC19 - 1, 2
Spill Prevention, Control & Clean Up	SR01 - 1, 2, 3, 4, 5, 6, 7, 8, 9

* Appendix B provides descriptions for each BMP category.



PROJECT NO.:
5025-18-2002

DATE:
JANUARY 2019

DRAWN BY:
CAB

CHECKED BY:
AA/NP

wood.

SAN DIEGO INTERNATIONAL AIRPORT

**Frontier
Operating Areas**

FIGURE

E-17

Intentionally Left Blank