

**Appendix B – Best Management Practices**

<b>BMP SC07</b>	<b>OUTDOOR MATERIAL STORAGE</b>	
<b>PURPOSE:</b> Prevent or reduce the discharge of pollutants to storm water from outdoor storage areas for significant material (e.g., fuels, chemicals, bagged material on pallets, soils or asphalt materials bulk storage, deicing, compounds, etc.)	<b>TARGETED ACTIVITIES:</b> ➔ Aircraft/Vehicle/Equipment Maintenance ➔ Aircraft/Vehicle Fueling ➔ Fuel/Chemical/Equipment Storage ➔ Cargo Handling	
<b>POLLUTION PREVENTION:</b>	<b>POLLUTANTS of CONCERN:</b> ➔ Fuel ➔ Solvents/Cleaning Solutions ➔ Deicing/Anti-Icing Fluids	
	<p>Implement the following pollution prevention practices and BMPs to prevent discharges of pollutants from outdoor storage areas to the storm water collection system:</p> <ul style="list-style-type: none"> <li><input type="checkbox"/> Store all significant materials indoors or under cover areas with secondary containment (e.g. dog house design).</li> <li><input type="checkbox"/> Develop and implement a Spill Prevention Control and Countermeasure (SPCC) Plan if required.</li> <li><input type="checkbox"/> Install overflow protection devices on ASTs to warn the operator or install automatic shut-off transfer pumps.</li> <li><input type="checkbox"/> Restrict access to AST, piping, valves.</li> <li><input type="checkbox"/> Properly label all storage containers</li> <li><input type="checkbox"/> Train personnel in the handling and management of hazardous materials.</li> <li><input type="checkbox"/> Store hazardous materials away from high-traffic areas to prevent accidental spills or damage to storage containers. Make storage containers highly visible to traffic with traffic cones or posts.</li> <li><input type="checkbox"/> Use tarpaulins, plastic sheeting (e.g. storm resistant polyethylene, polypropylene, or hypalon covering), roofs, buildings, and other enclosures for temporary or permanent coverings that are effective in preventing storm water contamination.</li> <li><input type="checkbox"/> Stack storage containers in accordance with the manufacturers' directions.</li> <li><input type="checkbox"/> In hazardous materials storage areas ensure sufficient aisle space to provide access for inspections and to improve the ease of material transport.</li> <li><input type="checkbox"/> Place adequate spill kits in appropriate locations.</li> </ul>	

**Appendix B – Best Management Practices**

<b>BMP SC07</b>	<b>OUTDOOR MATERIAL STORAGE</b>	
<b>OPERATIONS:</b>		<b>APPLICABLE TENANTS/DEPARTMENTS:</b>
<b>Sub-BMPs</b> - 01 <input type="checkbox"/> - 02 <input type="checkbox"/> - 03 <input type="checkbox"/> - 04 <input type="checkbox"/> - 05 <input type="checkbox"/> - 06 <input type="checkbox"/> - 07 <input type="checkbox"/> - 08 <input type="checkbox"/> - 09 <input type="checkbox"/> - 10 <input type="checkbox"/> - 11 <input type="checkbox"/> - 12 <input type="checkbox"/> - 13 <input type="checkbox"/>	<p>Outdoor material storage areas and equipment should not be located directly in the path of storm drains.</p> <p>Outdoor material storage areas have areas with overhead cover and secondary containment.</p> <p>Outdoor material storage areas are prevented from contacting stormwater run-on and run-off (e.g., by the use of berms, wood pallets etc).</p> <p>Cover and contain material stockpiles or implement erosion control practices at the perimeter of the site and at any inlets or catch basins to prevent the off-site transport of eroded material.</p> <p>Cover wood products treated with preservative chemicals with tarps or store them indoors.</p> <p>Install protection guards (bollards, posts, or guardrails) around ASTs and piping to prevent damage from vehicles or forklifts and any subsequent release.</p> <p>Regular inspections are performed on tanks, storage containers, and berms to check for corrosion, structural failure, loose fittings, poor welds, leaks etc. Repairs or replacements are performed as needed.</p> <p>Liquid materials in ASTs should be stored in double-walled, valved storage tanks or within concrete bermed secondary containment areas to provide the capacity to contain the entire volume of the single largest container, with sufficient freeboard to contain precipitation. The area inside the curb should slope to a locked or valved drain.</p> <p>Precipitation from bermed areas should be drained to the sanitary sewer if available, or inspected and tested according to applicable regulations prior to its release to a storm drain. The drain must have a positive control, such as a lock, valve, or plug, below the product level in the tank to prevent release of contaminated liquids.</p> <p>Properly dispose of ponded storm water removed from bermed or containment areas.</p> <p>The facility/operation has and displays a County hazardous materials permit for hazardous materials storage.</p> <p>Maintain an accurate, up-to-date inventory of the materials delivered and stored on site.</p> <p>Do not permanently store equipment and materials in the bed of a pickup truck. If storing temporarily, provide cover and containment.</p>	→ ACE → Air Canada → Alaska → Allegiant → Allied Aviation → American Airlines → ARFF → Cartwright → Delta → DHL → Edelweiss → FedEx → Flagship → Frontier → Hawaiian → HMS Host → JAL → JetBlue → Lufthansa → Menzies → SDCRAA → Signature → Southwest → Spirit → SSP → United → UPS → WestJet
<b>STRUCTURAL TREATMENT BMPs:</b> Refer to BMP TC01 for information on		

**Appendix B – Best Management Practices**

<b>BMP SC07</b>	<b>OUTDOOR MATERIAL STORAGE</b>	
structural treatment BMPs.		
<b>BMP FREQUENCIES/EQUIPMENT/TOOLS:</b> Outdoor material storage occurs on a daily basis. Equipment/tools to implement BMPs include spill pallets, outdoor sheds, overpack containers, tarps, flammable materials storage lockers, bermed or containment areas, indoor or covered storage areas, fiber rolls, wooden pallets, spill kits, brooms, and drums.		
<b>AUTHORIZED LOCATIONS FOR THE OUTDOOR STORAGE OF SIGNIFICANT MATERIALS:</b>		
<input type="checkbox"/>	To implement BMPs for the prevention of discharges of pollutants from outdoor storage areas, store significant materials at the designated storage areas as shown in the attached map.	
Date:		Version: 2.0

Individual BMP From:  
**Appendix B – Best Management Practices**

Intentionally Left Blank



Tenants Implementing SC-07 BMP:  
Outdoor Material Storage

- |                     |             |               |               |                |                |                 |          |                 |
|---------------------|-------------|---------------|---------------|----------------|----------------|-----------------|----------|-----------------|
| 1 - Alaska          | 6 - ARFF    | 12 - FedEx    | 15 - HMS Host | 19 - SDCRAA    | 23 - United    | 27 - Air Canada | 38 - DHL | 78 - Signature  |
| 2 - Allied Aviation | 7 - Menzies | 13 - Frontier | 16 - JetBlue  | 21 - Southwest | 24 - UPS       | 29 - West Jet   | 42 - JAL | 96 - Cartwright |
| 4 - American        | 10 - Delta  | 14 - Hawaiian | 18 - ACE      | 22 - FlagShip  | 26 - Allegiant | 35 - Spirit     | 45 - SSP | 100 - Edelweiss |
|                     |             |               |               |                |                |                 |          | 103 - Lufthansa |

SDCRAA

SDIA Boundary

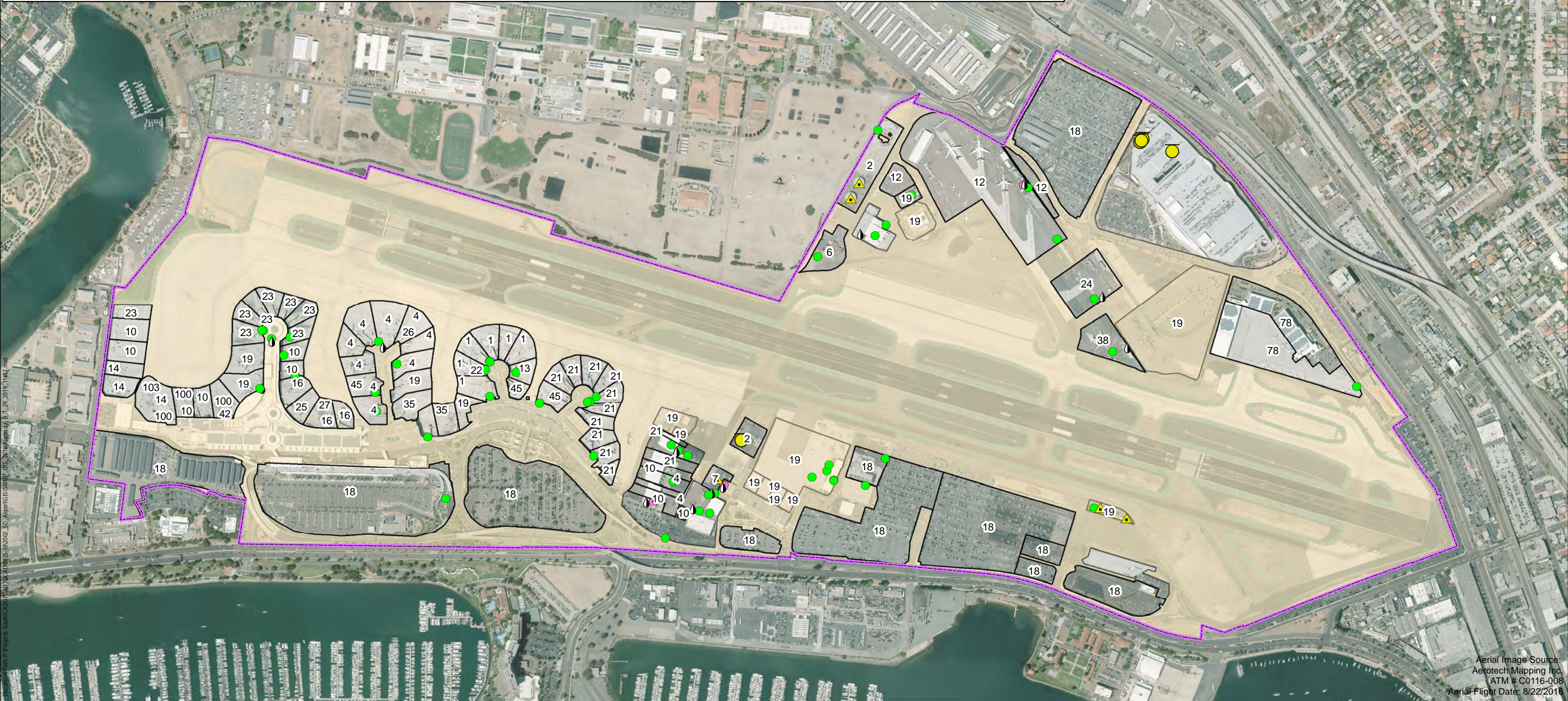
Fuel Storage

Material Storage

Metal Storage

Oil Storage

Underground Storage Tank



Aerial Image Source:  
Aerotek Mapping Inc.  
ATM # C0116-008  
Aerial Flight Date: 8/22/2016



Individual BMP From:

**Appendix B – Best Management Practices**

Intentionally Left Blank