

## Appendix B – Best Management Practices

BMP SC01	NON-STORM WATER MANAGEMENT	
<b>PURPOSE:</b> Eliminate non-storm water discharges to the storm water collection system.		<b>TARGETED ACTIVITIES:</b> <ul style="list-style-type: none"> <li>➔ Aircraft Deicing/Anti-Icing</li> <li>➔ Aircraft Lavatory Service</li> <li>➔ All Cleaning</li> <li>➔ All Fueling</li> <li>➔ All Maintenance</li> <li>➔ All Storage</li> <li>➔ All Washing</li> <li>➔ Cargo Handling</li> <li>➔ Fire Fighting Equipment Testing</li> <li>➔ Floor Washdowns</li> <li>➔ Garbage Collection</li> <li>➔ Landscape Irrigation</li> <li>➔ Painting/Stripping</li> <li>➔ Potable Water System Flush</li> <li>➔ Runway Rubber Removal</li> </ul>
<b>POLLUTION PREVENTION:</b>		<b>POLLUTANTS of CONCERN:</b>
	<p>Implement the following pollution prevention practices and BMPs to prevent non-storm water discharges to the storm water collection system (also see Section 3 for authorized and unauthorized non-storm water discharges, and BMPs to control them):</p> <ul style="list-style-type: none"> <li><input type="checkbox"/> Perform visual inspections of discharge points to the storm drain system – observe uncharacteristic volumes, any staining, colors, turbidity, odors, deposition, floatables, and foaming characteristics of any flow.</li> <li><input type="checkbox"/> Locate illicit connections to the storm drain system by visual inspections, CCTV survey, smoke testing, dye testing, and electromagnetic radio frequency testing.</li> <li><input type="checkbox"/> Isolate problem areas and plug illicit discharge points.</li> <li><input type="checkbox"/> Post “No Dumping” signs with a phone number for reporting dumping and disposal.</li> <li><input type="checkbox"/> Use “dry” cleaning and surface preparation techniques where feasible.</li> <li><input type="checkbox"/> Inspect waste and material containers frequently for leaks and proper closure seal.</li> <li><input type="checkbox"/> Maintain adequate supplies of spill response equipment and materials in accessible locations near areas where spills may occur.</li> <li><input type="checkbox"/> Investigate the use of automatic rain shutoff devices or smart controllers, micro irrigation systems, or low water use landscaping to minimize irrigation runoff. Experiment in new technologies and practices to conserve water. Implement mandatory water conservation measures.</li> </ul>	<ul style="list-style-type: none"> <li>➔ Aircraft Fire Fighting Foam</li> <li>➔ Bacteria</li> <li>➔ Battery Acid</li> <li>➔ Deicing/Anti-Icing Fluid</li> <li>➔ Dumpster Wastes</li> <li>➔ Floatables</li> <li>➔ Oil and Grease</li> <li>➔ Fuel</li> <li>➔ Landscape Waste</li> <li>➔ Lavatory Chemical Wastes</li> <li>➔ Metals</li> <li>➔ Nutrients</li> <li>➔ Paint</li> <li>➔ Pesticides/Herbicides/Fertilizers</li> <li>➔ Potable Water System Chemicals</li> <li>➔ Rubber Particles</li> <li>➔ Sediment</li> <li>➔ Solvents/Cleaning Solutions</li> <li>➔ Vehicle Fluids</li> </ul>

BMP SC01	NON-STORM WATER MANAGEMENT	
<input type="checkbox"/> Use recycled or non-potable water for construction purposes when available.  <input type="checkbox"/> Authorized non-stormwater discharges include the following (provided that BMPs are in place to control them): fire-hydrant and fire prevention or response system flushing; potable water sources and system flushing; drinking water fountains; air conditioning, refrigerator or compressor condensation; landscape irrigation watering provided that Integrated Pest Management practices have been used, seawater infiltration, incidental windblown cooling tower mist, and uncontaminated natural springs, groundwater, foundation drainage, and footing drainage. All other non-stormwater discharges are prohibited.  <b>NEVER HOSE DOWN OR BURY MATERIAL SPILLS</b>		
<b>OPERATIONS:</b>		<b>APPLICABLE TENANTS/ DEPARTMENTS:</b>
<b>Sub-BMPs</b>		
- 01 <input type="checkbox"/>	Notify Airport Operations (619-400-2710) and the Airport Authority Environmental Affairs Department (619-400-2784) if there is any evidence of illicit connections or illegal discharges.	→ ACE → Air Canada → Alaska → Allegiant → Allied Aviation → American Airlines → ARFF → Bradford → British Airways → Cartwright → Conrac → Delta → DHL → Edelweiss → FedEx → Flagship → Frontier → Hawaiian → HFF → HMS Host → JAL → Jet Blue → Lufthansa → Menzies → Mission Yogurt → SDCRAA → Siemens → Signature → Southwest → SP Plus → Spirit → SSP → Sun Country → United → UPS
- 02 <input type="checkbox"/>	Provide the appropriate level of employee, tenant and public training or education in non-storm water discharge management, i.e., spill response and prevention, non-storm water pollution prevention, and hazardous materials management.	
- 03 <input type="checkbox"/>	Limit the availability of outdoor water supplies (e.g. hose bibs, faucets) and post with appropriate use signs to discourage uses that may pollute the storm drain system/receiving water.	
- 04 <input type="checkbox"/>	Ensure the site is free of illicit connections and illegal discharges.	
- 05 <input type="checkbox"/>	Do not irrigate during forecasted rain events and 48 hours following a rain event.	
- 06 <input type="checkbox"/>	Periodically inspect and maintain irrigation systems and landscaped areas to prevent prohibited over-irrigation and to repair any leaks.	
- 07 <input type="checkbox"/>	Direct air conditioning or refrigerator condensation to landscaping, porous surface, into the sanitary sewer, or for reuse.	
- 08 <input type="checkbox"/>	Irrigate using the satellite water-tracking system to reach proper levels of soil moisture applicable for landscaping, and follow City water restriction guidelines.	
- 09 <input type="checkbox"/>	Use a hand-held hose equipped with positive shut-off nozzle, handheld water container, or timed sprinkler system to irrigate landscaped areas.	
- 10 <input type="checkbox"/>	Prohibit over-irrigation of landscaped areas	

**Appendix B – Best Management Practices**

<b>BMP SC01</b>	<b>NON-STORM WATER MANAGEMENT</b>	
		→ WestJet
<b>STRUCTURAL TREATMENT BMPs:</b> Refer to BMP TC01 for information on structural treatment BMPs.		
<b>BMP FREQUENCIES/EQUIPMENT/TOOLS:</b> Observations of illicit discharges and connections are on a continual, ad hoc basis, during normal operations, and reported when observed. Formal inspections are conducted as described in Section 3.0 and Appendix D-2. Training frequencies and tools are described in Sections 7.0 and 9.0. Irrigation frequencies and tools are described in Section 3.0.		
<b>AUTHORIZED LOCATIONS TO IMPLEMENT BMPs TO PREVENT NON-STORM WATER DISCHARGES:</b>		
<input type="checkbox"/>	Implement BMPs for the prevention of non-storm water discharges within the entire airport boundary. In particular, do not discharge non-storm water to the designated areas (storm drains) as shown on the attached map.	
Date:		Version: 2.0

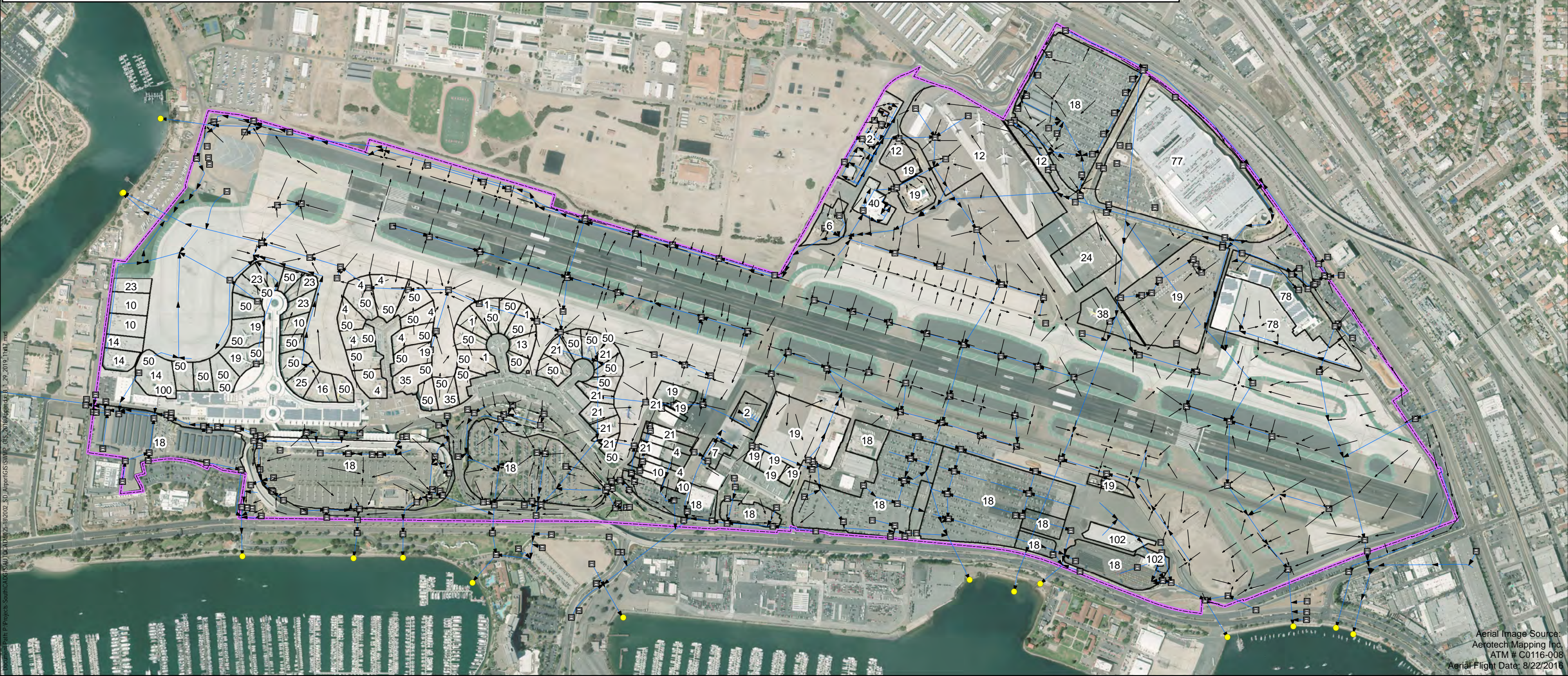
Individual BMP From:  
**Appendix B – Best Management Practices**

Intentionally Left Blank



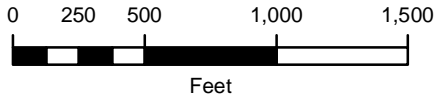
Tenants Implementing SC-01 BMP:  
Non-Storm Water Management

- |                     |               |               |                |                  |                      |               |                     |                 |
|---------------------|---------------|---------------|----------------|------------------|----------------------|---------------|---------------------|-----------------|
| 1 - Alaska          | 7 - Menzies   | 14 - Hawaiian | 19 - SDCRAA    | 24 - UPS         | 29 - West Jet        | 40 - Bradford | 47 - Mission Yogurt | 96 - Cartwright |
| 2 - Allied Aviation | 10 - Delta    | 15 - HMS Host | 21 - Southwest | 26 - Allegiant   | 35 - Spirit          | 42 - JAL      | 50 - Siemens        | 100 - Edelweiss |
| 4 - American        | 12 - FedEx    | 16 - JetBlue  | 22 - FlagShip  | 27 - Air Canada  | 37 - British Airways | 45 - SSP      | 77 - Conrac         | 102 - SP Plus   |
| 6 - ARFF            | 13 - Frontier | 18 - ACE      | 23 - United    | 28 - Sun Country | 38 - DHL             | 46 - HFF      | 78 - Signature      | 103 - Lufthansa |



Aerial Image Source:  
Aerotech Mapping Inc.  
ATM # C0116-008  
Aerial Flight Date: 8/22/2016

PROJECT NO.:  
5025-18-2002  
DATE:  
JANUARY 2019  
DRAWN BY:  
CAB  
CHECKED BY:  
AA/NP



wood.

STORM WATER MANAGEMENT PLAN  
AT SAN DIEGO INTERNATIONAL AIRPORT  
San Diego, California

SC-01 BMP:  
Non-Storm Water Management

FIGURE  
SC-01



Individual BMP From:

**Appendix B – Best Management Practices**

Intentionally Left Blank