

Southwest Airlines

SIC Codes	4512, 4522	Contact Information	
Primary Activity	Passenger Carrier	Thomas Starr	Manager - Station
Drainage Areas	7, 8	P 6192317345	C 9093226105
Nearest MS4 Inlet	< 200 ft.	Thomas.Starr@wnco.com	
Address	3665 North Harbor Dr. T1 San Diego, CA 92101	George Parker	Supervisor - Maintenance
		P 6192983005	
		george.parker@wnco.com	

Facility Description and Activities

1. Most ground support equipment and vehicle maintenance (including painting) is conducted inside the Maintenance Shop. Some minor vehicle and ground support equipment maintenance is performed on ramp.
2. Aircraft maintenance is performed on ramp by Pacific Aircraft Maintenance, a subtenant to Southwest.
3. ASIG fuels aircraft, vehicles, and ground support equipment.
4. There is a hose at the hose bib near Gate 9. It is used only to fill up containers for watering plants in the office.
5. Potable water is allowed to run for 1 minute then turned off and linked to aircraft. This is performed as far away from the storm drains as possible, and the water evaporates before reaching storm drain.
6. Southwest has spill bins at Gates 2 and 10. These bins contain absorbents, brooms, shovels, and disposal drums.
7. Aircraft cleaning is performed offsite (Phoenix, Oakland, and Dallas).
8. Significant materials are stored in flammable materials storage lockers.
9. Wastes are stored in Hazardous Waste Accumulation Areas in the gate area and inside the Maintenance Shop.
10. Hazardous wastes are picked up every 3 months. Evergreen recycles oil, Toxguard recycles antifreeze, and Nexeo Solutions collects all other hazardous wastes.
11. ABM Services, a subtenant to Southwest, performs cabin services for Southwest and other airlines.
12. Pacific Aircraft Maintenance, a subtenant to Southwest, performs aircraft maintenance for various airlines at the gate areas.
13. Southwest is at Gates 1A through 10 at T1.
14. Southwest performs deicing at the gates. At gates 4, 5, 9, and 10 they push back from the gate to get past the storm drains. Air Operations is notified every time deicing is performed. Monthly usage is sent to EAD. A zamboni is used to vacuum up the excess liquid that falls onto the ramp and is disposed of. Deicing is not performed in the rain. All deicing mixing is conducted at the triturator.

Significant Materials/Activities Potentially Exposed to Storm Water

Potential Pollutant Sources

Aircraft deicing
 Aircraft sanitary services
 Cargo handling
 Equipment storage
 Fluid leaks
 Fuel spills,Fuel transfer
 Material loading/unloading
 Outdoor waste storage
 Potable water flushing
 Tank fuel transfer
 Trash collection
 Vehicle parking

Best Management Practices Applicable to Facility

Activities

Non-Storm Water Management
 Outdoor Equipment Ops Maintenance Areas
 Aircraft, Ground Vehicle & Equipment
 Maintenance
 Aircraft, Ground Vehicle & Equipment Fueling
 Aircraft Deicing/Anti-Icing
 Outdoor Loading/Unloading of Materials
 Outdoor Material Storage
 Waste Handling & Disposal
 Employee Training
 Lavatory Service Operation

Tenant Summaries

Potential Pollutants

Anti Freeze Battery
 Acid Carburetor
 Cleaner
 Cleaning Solutions
 Deicing/Anti-Icing Fluids
 Food Waste
 Fuel
 Hydraulic Fluids
 Lavatory Chemicals
 Lavatory Wastes
 Lubricants
 Metals
 Oil & Grease
 Paints
 Recyclables
 Solvents
 Transmission Fluid
 Trash

BMPs

SC01 - 1, 2, 3, 4
 SC02A - 1, 2
 SC02B - 1, 2, 3, 4, 5, 6, 7, 8, 9, 10, 11, 12, 13
 SC03 - 1, 2, 4, 5, 6, 8
 SC05 - 1, 2, 3, 4
 SC06 - 1, 2, 3, 4, 6, 7
 SC07 - 1, 2, 3, 7, 11, 12
 SC08 - 1, 2, 3, 4, 5, 8, 9, 10, 11, 12, 14
 SC10 - 1, 2, 3, 4
 SC11 - 3, 4, 5, 6, 7, 8, 9, 10
 SC14 - 1, 2, 3

Potable Water System Flushing	SC16 - 1, 2, 6, 11
Parking Lots Housekeeping	SC18 - 1, 2, 3, 4, 5, 6, 7, 8, 9
Safer/Alternative Products	SC19 - 1, 2
Spill Prevention, Control & Clean Up	SR01 - 1, 2, 3, 4, 5, 6, 7, 8, 9

* Appendix B provides descriptions for each BMP category.

Structural Control measures used by facility:

Materials Storage Area

Hazwaste accumulation areas in Maintenance shop and Terminal 1
Other materials stored in maintenance shop/cargo area

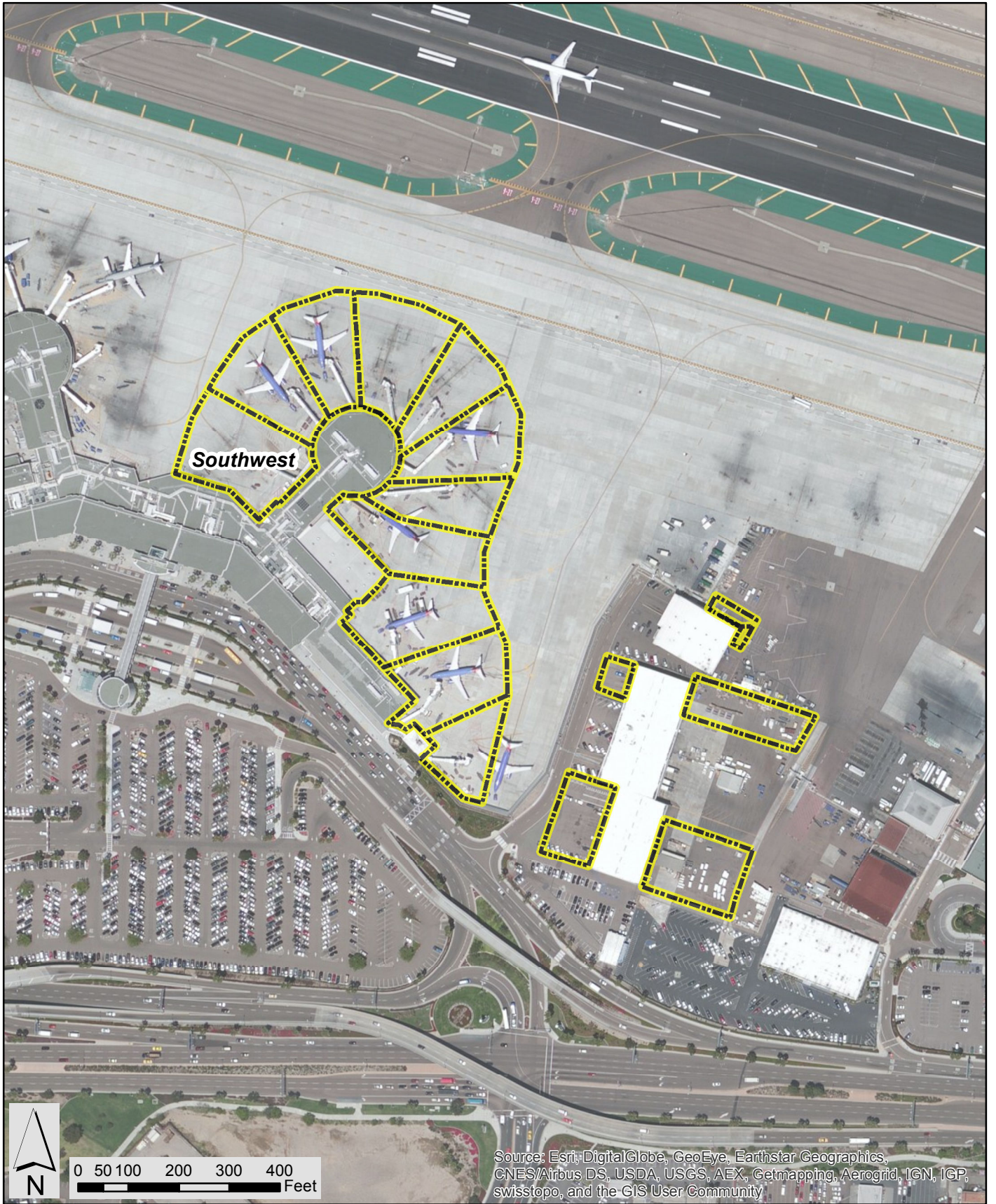
Materials Storage Amounts

Waste oil and absorbent may be stored in quantities above 55 gallon
Deicing fluid may be stored in quantities above 55 gallon
Waste deicing fluid may be stored in quantities above 55 gallon
No other materials recorded in quantities above 55 gallon

Shipping/Receiving Area

Maintenance shop/cargo area

Intentionally Left Blank



PROJECT NO.:
5025-13-0031

DATE:
JUNE 2015

DRAWN BY:
RMH

CHECKED BY:
AJA



**Southwest
Operating Areas**

San Diego International Airport

FIGURE

E-29

Intentionally Left Blank