

BMP SC12		OUTDOOR WASHDOWN/SWEEPING (APRON WASHING, RAMP SCRUBBING)	
PURPOSE: Prevent or reduce the discharge of pollutants to storm water from outdoor washdown and sweeping operations.		TARGETED ACTIVITIES: ➤ Apron Washing ➤ Ramp Scrubbing ➤ Outdoor Washdown ➤ Road Sweeping ➤ Ramp Sweeping	
POLLUTION PREVENTION:		POLLUTANTS of CONCERN:	
<input type="checkbox"/>	Implement the following pollution prevention practices and BMPs to prevent non-storm water discharges of pollutants from outdoor washdown and sweeping operations to the storm water collection system: <input type="checkbox"/> Use biodegradable or non-toxic cleaning products for outdoor washdown activities. <input type="checkbox"/> Investigate newer sweeping technologies such as high-efficiency sweepers or the CASQA-recommended regenerative air and vacuum-assisted dry sweepers. <input type="checkbox"/> Investigate non-potable or alternative sources of water when performing outdoor washdowns. Reuse water as much as possible before disposing it. <input type="checkbox"/> Follow water conservation practices when performing washdowns. <input type="checkbox"/> DO NOT DISCHARGE WASH WATER TO A STORM DRAIN. Notify Airport Operations (619-400-2710) and the Airport Authority Environmental Affairs Department (619-400-2784) if any discharges associated with outdoor washdowns have occurred.	 ➤ Oil and Grease ➤ Solvents/Cleaning Solutions ➤ Fuel ➤ Aircraft Fire Fighting Foam ➤ Deicing/Anti-Icing Fluids ➤ Sediment ➤ Floatables	
OPERATIONS:		APPLICABLE TENANTS/ DEPARTMENTS:	
Sub-BMPs - 01 <input type="checkbox"/>	Inspect and maintain sweeping and scrubbing equipment regularly to ensure effectiveness at removing pollutants and to avoid leaks.	 ➤ ACE ➤ Allied ➤ Flagship ➤ SDCRAA	
- 02 <input type="checkbox"/>	Roads, ramp areas, apron areas, and, if feasible, runway/taxiway areas are swept on a regular basis.		
- 03 <input type="checkbox"/>	Perform sweeping during dry weather using dry sweeping techniques where feasible.		
- 04 <input type="checkbox"/>	Operate sweepers at manufacturer-recommended optimal speeds.		
- 05 <input type="checkbox"/>	Properly dispose of debris and sediment from sweeping.		
- 06 <input type="checkbox"/>	Berm outdoor washdown areas to contain the wash water and to prevent run-on to adjacent areas.		

<p>- 07 <input type="checkbox"/></p> <p>- 08 <input type="checkbox"/></p> <p>- 09 <input type="checkbox"/></p> <p>- 10 <input type="checkbox"/></p> <p>- 11 <input type="checkbox"/></p>	<p>Minimize the amount of water used during outdoor washdown activities.</p> <p>Wash water is collected and filtered and reused, or discharged to the sanitary sewer system through a permitted connection at designated and approved discharge facilities (i.e., dewatering bin).</p> <p>Maintain records of the sweeping or scrubbing activities including the miles swept or scrubbed and the amount of waste collected.</p> <p>Do not use a running hose to wash down sidewalks, or other hard surface areas. A water-efficient, filtering and recycling device must be used and all wash water must be prevented from entering the storm drain system (curb gutters, streets, alleys, and inlets)</p> <p>Use reclaimed or recycled/filtered water.</p>	
STRUCTURAL TREATMENT BMPs: Refer to BMP TC01 for information on structural treatment BMPs.		
BMP FREQUENCIES/EQUIPMENT/TOOLS: Outdoor washdown/sweeping occurs on a daily basis. Equipment/tools to implement BMPs include recycling/filtering power washers, ramp scrubbers, mechanical and regenerative air sweepers, booms, containment devices, spill kits, brooms, dumpsters, dewatering bins and drums.		
AUTHORIZED LOCATIONS FOR OUTDOOR WASHDOWN AND SWEEPING ACTIVITIES:		
<input type="checkbox"/>	<p>To implement BMPs for the prevention of non-storm water discharges, perform outdoor washdown and sweeping activities in the designated areas as shown on the attached map.</p>	
Date:		Version: 2.0

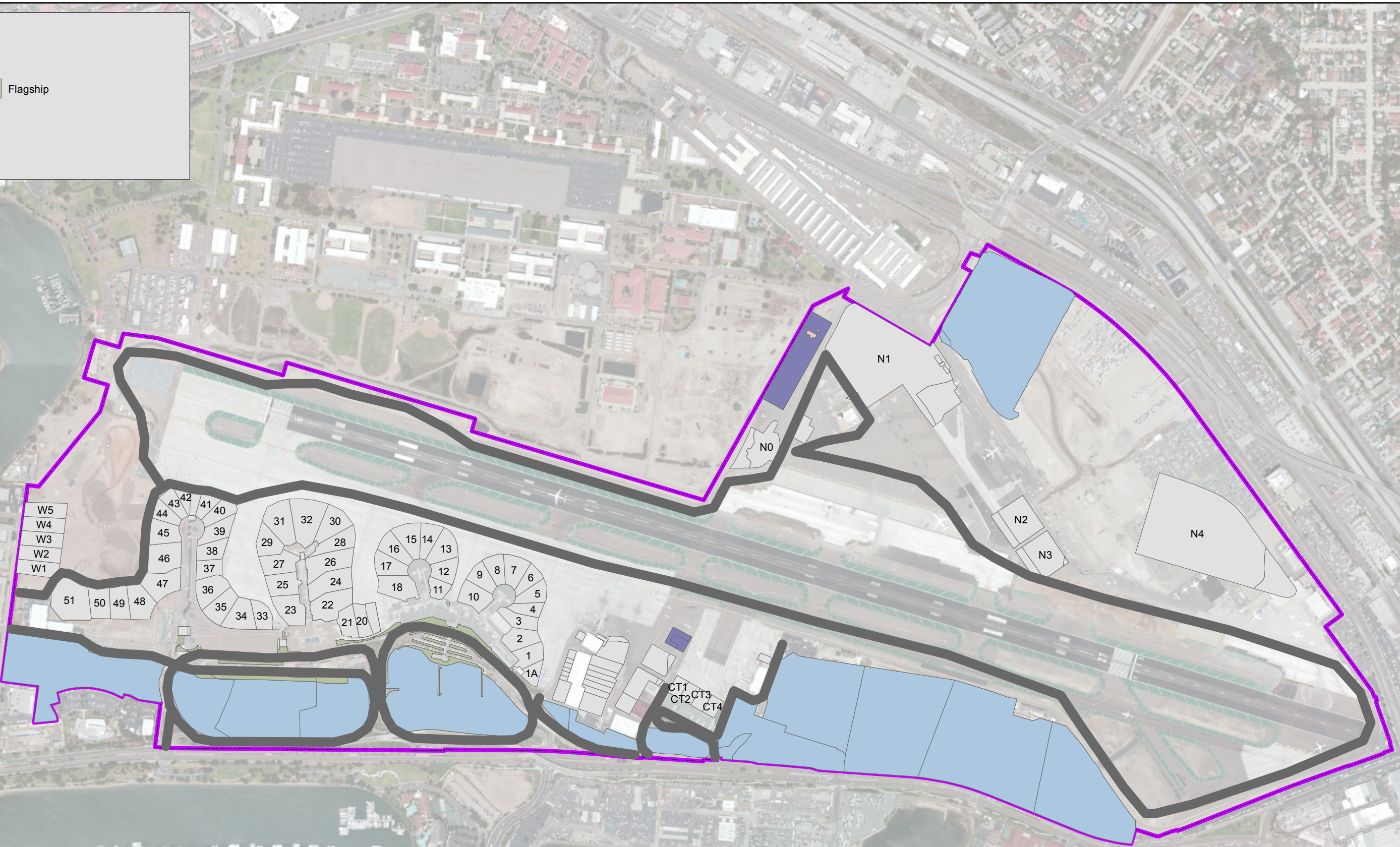
Airport Boundary

Road Sweeping

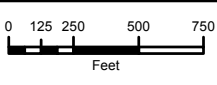
ACE

Allied Aviation

Flagship



Source: Esri, DigitalGlobe, GeoEye, i-cubed, Earthstar Geographics, CNES/Airbus DS, USDA, USGS, AEX, Getmapping, Aerogrid, IGN, IGP, swisstopo, and the GIS User Community



Intentionally Left Blank