

Tenant Summary Sheet

Tenant:

Continental

SIC Code: 4512, 4522

Primary Activity: Passenger Carrier

Drainage Area: 12

Nearest MS4 inlet: < 200 feet

Contact: Michael Wilson, Supervisor

E: michael.wilson@coair.com, P: 619-564-5817, C: 949-300-1338, F: 619-564-5862

Secondary Contact: Gladston Taylor III, Sr.,
Environmental Specialist

E: gladston.tayloriii@coair.com, P: 310-258-3725, C: 310-686-6950

Address: 3835 North Harbor Drive #115
San Diego, CA 92101

Tenant Description and Primary Industrial Activities:

1. Continental operates out of gates 35 and 36 in Terminal 2 West.
2. Continental's own mechanics perform minor maintenance of aircraft parked on ramp.
3. ASIG fuels aircraft, ground support equipment, and vehicles.
4. GAT performs all ground services and cargo handling. GAT also performs maintenance on vehicles and equipment (loaders, tugs).
5. Aircraft washing performed offsite.
6. Ashland picks up all wastes.
7. Tenant uses the Airport Storm Water Management Plan. Tenant has a Hazardous Materials Business Plan and a Corporate Environmental Procedures Manual.

Significant Materials Potentially Exposed to Storm Water:

Potential Pollutant Sources

Aircraft fueling
Aircraft maintenance
Aircraft sanitary services
Cargo handling
Fluid leaks from aircraft
Fuel spills
Vehicle fueling
Vehicle parking

Potential Pollutants

Antifreeze, Oil and Grease, Solvents,
Cleaning Solutions, Lubricants, Fuel,
Fuel, Lavatory Chemicals, Trash,
Battery acid, Lavatory wastes

Best Management Practices and Current Structural Controls:

The list below identifies the BMP categories and specific BMPs that are applicable to Continental. Appendix B provides a description of each BMP category.

Applicable BMP Categories

Non-Storm Water Management
Outdoor Equipment Ops and Maintenance Areas
Aircraft, Ground Vehicle and Equipment Maintenance

Aircraft, Ground Vehicle and Equipment Fueling
Aircraft, Ground Vehicle and Equipment Cleaning
Outdoor/Indoor Material Storage
Waste Handling and Disposal
Employee Training

BMP Number

SC01 - 1, 2, 3, 4
SC02A - 2, 1
SC02B - 10, 3, 7, 1, 11, 12, 13, 2, 4, 5, 6, 8, 9
SC03 - 1, 2, 3, 4, 5, 6, 8
SC04 - 1
SC07 - 1, 11, 12, 2, 3, 7
SC08 - 1, 10, 11, 12, 14, 2, 3, 4, 5, 8, 9
SC10 - 1, 2, 3, 4

Tenant Summary Sheet

Tenant:

Continental

Applicable BMP Categories

Storm Drain Maintenance

Housekeeping

Safer/Alternative Products

Spill Prevention, Control, and Clean-up

BMP Number

SC17 - 2, 7

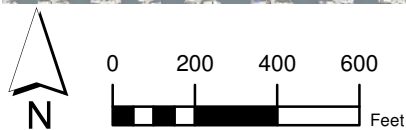
SC18 - 1, 2, 3, 4, 5, 6, 7, 8, 9

SC19 - 1, 2

SR01 - 1, 2, 3, 4, 5, 6, 7, 8, 9

Structural control measures used at Continental:

Concrete curbing is used to direct stormwater away from covered storage area.



PROJECT NO.:
5013-11-0003

DATE:
November 2011

DRAWN BY:
RMH

CHECKED BY:
AA



MACTEC

MACTEC Engineering and Consulting, Inc.

**Continental
Operating Areas**
San Diego International Airport

FIGURE

E-10