

Appendix B – Best Management Practices (BMPs)

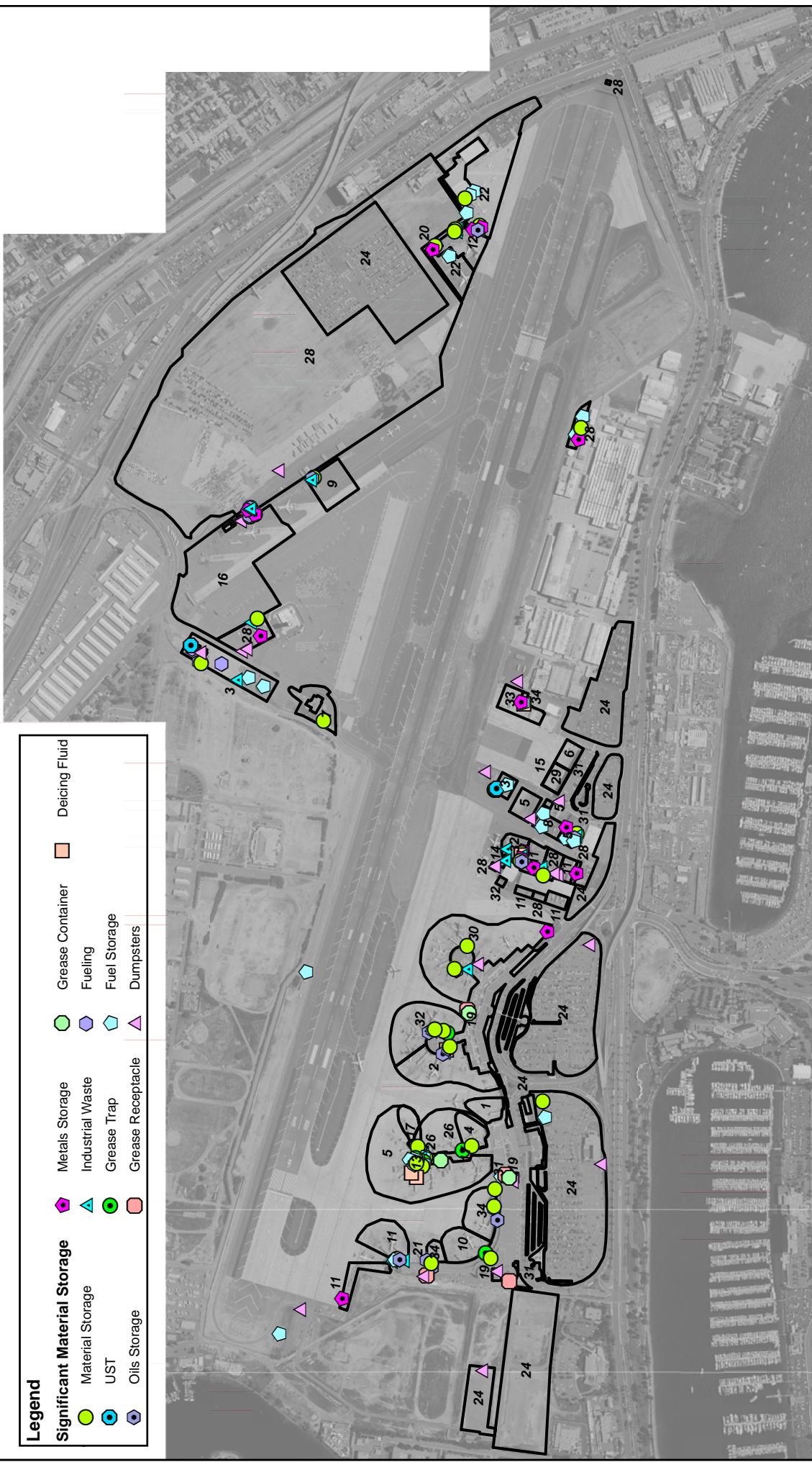
BMP SC18	HOUSEKEEPING	
PURPOSE: Implement good housekeeping measures to eliminate non-storm water discharges and reduce the potential for pollutants to enter the storm water collection system.		TARGETED ACTIVITIES: <ul style="list-style-type: none"> ➔ Aircraft Deicing/Anti-Icing ➔ Aircraft Lavatory Service ➔ All Fueling ➔ All Maintenance ➔ All Storage ➔ All Washing ➔ Cargo Handling ➔ Equipment Cleaning ➔ Fire Fighting Equipment Testing ➔ Floor Washdowns ➔ Garbage Collection ➔ Painting/Stripping ➔ Potable Water System Flushing ➔ Runway Rubber Removal
POLLUTION PREVENTION:		POLLUTANTS of CONCERN: <ul style="list-style-type: none"> ➔ Aircraft Fire Fighting Foam ➔ Battery Acid ➔ Cleaning Solution ➔ Deicing/Anti-Icing Fluid ➔ Dirt particles ➔ Dumpster Wastes ➔ Floatables ➔ Fuel ➔ Heavy Metals ➔ Hydrocarbons ➔ Landscape Waste ➔ Lavatory Chemicals ➔ Lavatory Chemical Waste ➔ Lavatory Truck Wash Water ➔ Lavatory Waste ➔ Metals ➔ Oil and Grease ➔ Paint ➔ Pesticides/Herbicides/ Fertilizers ➔ Potable Water System Chemicals ➔ Rubber Particles ➔ Sediment ➔ Solvents ➔ Suspended solids ➔ Trash ➔ Vehicle Fluids
<input type="checkbox"/>	Implement the following pollution prevention practices and BMPs to eliminate non-storm water discharges and reduce the potential for pollutants to enter the storm water collection system: <input type="checkbox"/> Clean operation areas and facilities using dry methods. <input type="checkbox"/> Maintain adequate supplies of spill response equipment and absorbent materials in accessible locations where significant materials are stored and used. <input type="checkbox"/> NEVER HOSE DOWN PAVED AREAS TO THE STORM DRAINS.	

Appendix B – Best Management Practices (BMPs)

OPERATIONS:		APPLICABLE TENANTS/ DEPARTMENTS:
Sub-BMPs - 01 <input type="checkbox"/> Perform and document on a regular basis self-inspections and evaluations of the implemented BMPs. - 02 <input type="checkbox"/> Keep all facility and operation areas clean and orderly. - 03 <input type="checkbox"/> Place trash receptacles in appropriate locations. - 04 <input type="checkbox"/> Sweep all facility and operation areas at least once per week to prevent the accumulation of sediments, debris, and contaminants. - 05 <input type="checkbox"/> Properly dispose of all debris and sediment from sweeping. - 06 <input type="checkbox"/> Store significant materials in the appropriate containers that are properly sealed and labeled. - 07 <input type="checkbox"/> Store significant materials within secondary containment. - 08 <input type="checkbox"/> Store significant materials in a restricted access area. - 09 <input type="checkbox"/> Material Safety Data Sheets (MSDSs) are readily available for all significant materials.		→ Aero Mexico → Alaska Airlines → Allied Aviation → Aloha Airlines → American Airlines → American Eagle → ARFF → ASIG → BAX Global → Continental → Delta → DHL Express → Elite Line Service → Exec Air → Express Jet → FedEx → Frontier → HMS Host → Jet Wash Inc. → Jet Blue → Jimsair → LPi → Northwest → SDCRAA → Sky West → Southwest → SPC → United → UPS → US Airways
STRUCTURAL TREATMENT BMPs: Refer to BMP TC01 for information on structural treatment BMPs.		
AUTHORIZED LOCATIONS TO IMPLEMENT HOUSEKEEPING BMPs:		

Appendix B – Best Management Practices (BMPs)

<input type="checkbox"/>	Prevent non-storm water discharges, and contact of pollutants with storm water discharges by implementing good housekeeping BMPs in the designated areas as shown in the attached map.	
Date:		Version: 1.0



PROJECT NO.: 5012-08-0002
 DATE: February 2008
 DRAWN BY: SKR
 CHECKED BY:



**San Diego
International Airport**

**BMP SC-18
Housekeeping**

FIGURE
SC-18