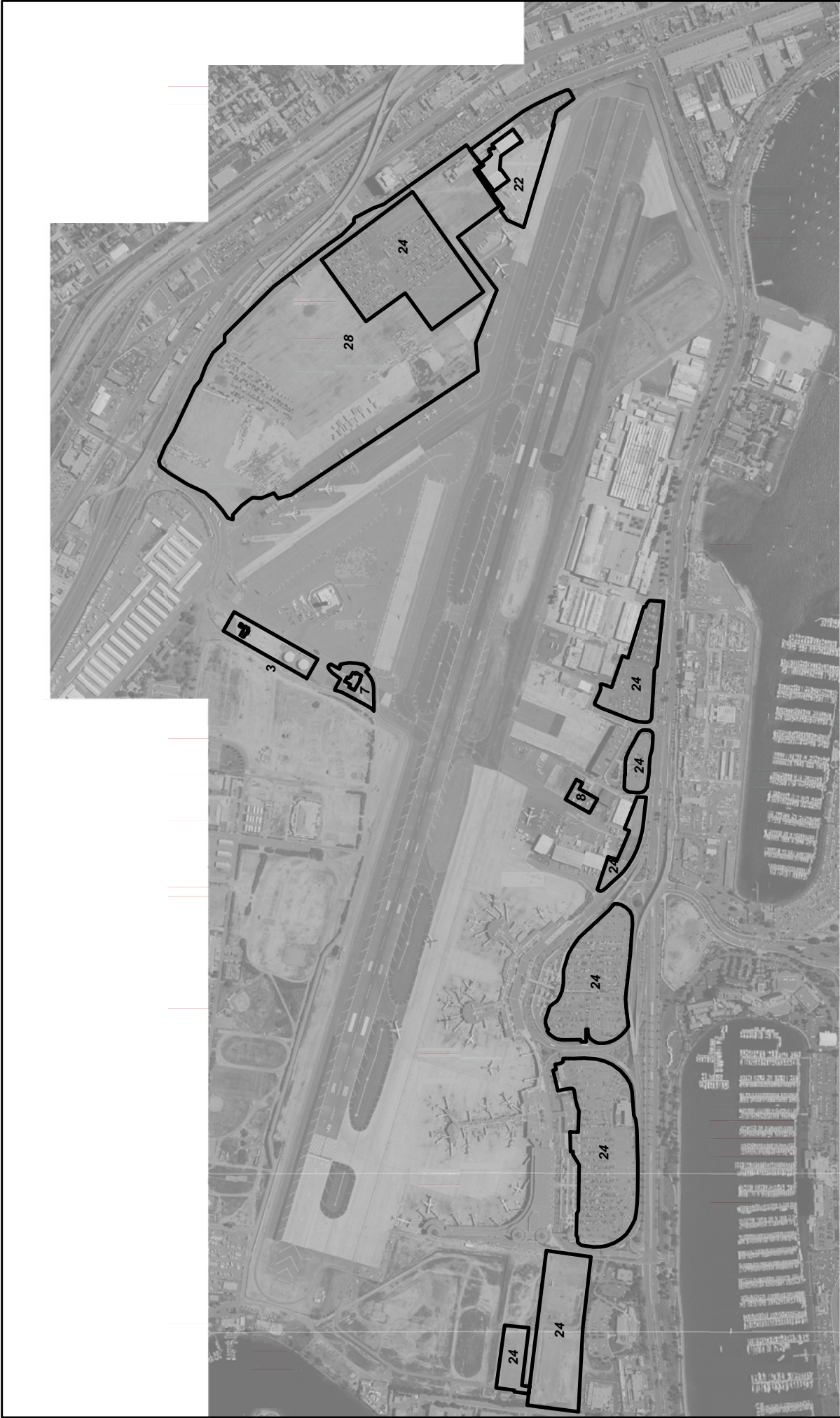


Appendix B – Best Management Practices (BMPs)

BMP SC16	PARKING LOTS	
PURPOSE: Prevent and reduce the discharge of pollutants from parking areas.		TARGETED ACTIVITIES: ➔ Vehicle parking ➔ Surface cleaning and maintenance ➔ Litter control
POLLUTION PREVENTION:		POLLUTANTS of CONCERN:
	Implement the following pollution prevention practices and BMPs to prevent non-storm water discharges from parking areas to the storm water collection system: <input type="checkbox"/> Ensure all trash receptacles are covered. <input type="checkbox"/> Install treatment control BMPs, where practicable, in parking lot areas to treat parking lot runoff. <input type="checkbox"/> Design parking lot areas to include semi-permeable hardscape and Low Impact Development practices. <input type="checkbox"/> Inspect and maintain sweeping equipment regularly to ensure effectiveness at removing pollutants and to avoid leaks.	➔ Trash ➔ Suspended solids ➔ Hydrocarbons ➔ Oil and grease ➔ Heavy Metals
OPERATIONS:		APPLICABLE TENANTS/ DEPARTMENTS:
Sub-BMPs - 01 <input type="checkbox"/>	Post “No Littering” signs around parking lots and regularly empty trash receptacles.	➔ Allied Aviation ➔ ARFF ➔ ASIG ➔ Jimsair ➔ LPI ➔ SDCRAA
- 02 <input type="checkbox"/>	Sweep all parking lot areas on a regular basis to remove accumulated debris and sediment.	
- 03 <input type="checkbox"/>	Operate sweepers at manufacturer-recommended optimal speeds.	
- 04 <input type="checkbox"/>	Perform sweeping in parking lot areas when the number of parked vehicles is lowest to maximize areas swept.	
- 05 <input type="checkbox"/>	Maintain records of the sweeping activities including the miles swept and the amount of waste collected.	
- 06 <input type="checkbox"/>	Clean oily spots from parking lot surfaces with absorbent materials.	
- 07 <input type="checkbox"/>	Perform all repairs to parking lot surfaces during periods of dry weather.	
- 08 <input type="checkbox"/>	Cover and seal nearby storm drain inlets, catch basins, and manholes during parking lot repairs.	
- 09 <input type="checkbox"/>	Use drip pans and absorbent materials to catch and collect drips and leaks from paving equipment that are not in use.	
- 10 <input type="checkbox"/>	Hot bituminous materials used for parking lot repairs are to be	

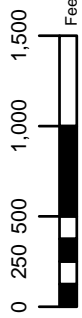
Appendix B – Best Management Practices (BMPs)

- 11 <input type="checkbox"/> - 12 <input type="checkbox"/>	preheated and transferred or loaded away from storm drain inlets. Properly dispose of used absorbent materials, debris, and collected drips. Avoid draining rooftop downspout drains onto paved parking lot surfaces.	
STRUCTURAL TREATMENT BMPs: Refer to BMP TC01 for information on structural treatment BMPs.		
AUTHORIZED LOCATIONS TO IMPLEMENT BMPs FOR PARKING LOTS:		
<input type="checkbox"/>	To reduce pollutants in parking lot storm water discharges, implement BMPs in areas as shown in the attached map.	
Date:		Version: 1.0



Facilities Legend

- 3 - Allied Aviation
- 7 - ARFF
- 8 - ASIG
- 22 - Jimsair
- 24 - Lpi
- 28 - SDCRAA



PROJECT NO.:	5012-08-0002
DATE:	February 2008
DRAWN BY:	SKR
CHECKED BY:	



**San Diego
International Airport**

**BMP SC-16
Parking Lots and Tenants
with Parking Areas**