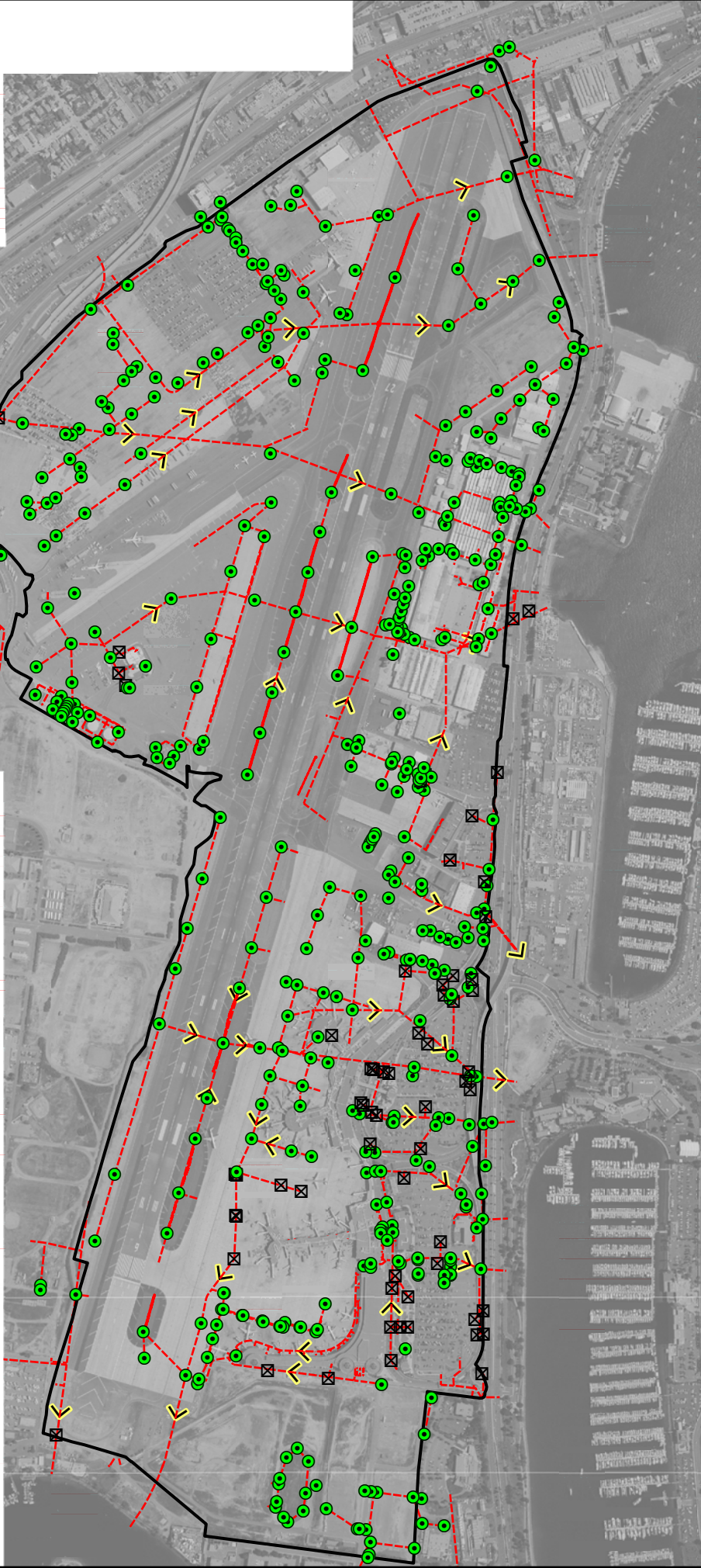
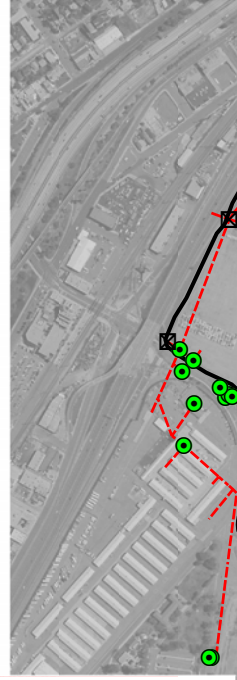


## Appendix B – Best Management Practices (BMPs)


BMP SC01	NON-STORM WATER MANAGEMENT	
<b>PURPOSE:</b> Eliminate non-storm water discharges to the storm water collection system.		<b>TARGETED ACTIVITIES:</b> <ul style="list-style-type: none"> <li>➔ Aircraft Deicing/Anti-Icing</li> <li>➔ Aircraft Lavatory Service</li> <li>➔ All Cleaning</li> <li>➔ All Fueling</li> <li>➔ All Maintenance</li> <li>➔ All Storage</li> <li>➔ All Washing</li> <li>➔ Cargo Handling</li> <li>➔ Fire Fighting Equipment Testing</li> <li>➔ Floor Washdowns</li> <li>➔ Garbage Collection</li> <li>➔ Painting/Stripping</li> <li>➔ Potable Water System Flush</li> <li>➔ Runway Rubber Removal</li> </ul>
<b>POLLUTION PREVENTION:</b>		<b>POLLUTANTS of CONCERN:</b> <ul style="list-style-type: none"> <li>➔ Aircraft Fire Fighting Foam</li> <li>➔ Battery Acid</li> <li>➔ Deicing/Anti-Icing Fluid</li> <li>➔ Dumpster Wastes</li> <li>➔ Floatables</li> <li>➔ Oil and Grease</li> <li>➔ Fuel</li> <li>➔ Landscape Waste</li> <li>➔ Lavatory Chemical Wastes</li> <li>➔ Metals</li> <li>➔ Paint</li> <li>➔ Pesticides/Herbicides/Fertilizers</li> <li>➔ Potable Water System Chemicals</li> <li>➔ Rubber Particles</li> <li>➔ Sediment</li> <li>➔ Solvents/Cleaning Solutions</li> <li>➔ Vehicle Fluids</li> </ul>
	<p>Implement the following pollution prevention practices and BMPs to prevent non-storm water discharges to the storm water collection system (also see Section 3 for authorized and unauthorized non-storm water discharges, and BMPs to control them):</p> <ul style="list-style-type: none"> <li><input type="checkbox"/> Perform visual inspections of discharge points to the storm drain system – observe uncharacteristic volumes, colors, turbidity, odors, deposition, staining, floatables, and foaming characteristics of any flow.</li> <li><input type="checkbox"/> Locate illicit connections to the storm drain system by visual inspections, CCTV survey, smoke testing, and electromagnetic radio frequency testing.</li> <li><input type="checkbox"/> Isolate problem areas and plug illicit discharge points.</li> <li><input type="checkbox"/> Post “No Dumping” signs with a phone number for reporting dumping and disposal.</li> <li><input type="checkbox"/> Use “dry” cleaning and surface preparation techniques where feasible.</li> <li><input type="checkbox"/> Inspect waste and material containers frequently for leaks and proper closure seal.</li> <li><input type="checkbox"/> Maintain adequate supplies of spill response equipment and materials in accessible locations near areas where spills may occur.</li> </ul> <p><b>NEVER HOSE DOWN OR BURY MATERIAL SPILLS</b></p>	

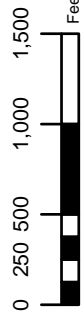
## Appendix B – Best Management Practices (BMPs)

<b>OPERATIONS:</b>		<b>APPLICABLE TENANTS/DEPARTMENTS:</b>  → Aero Mexico → Alaska Airlines → Allied Aviation → Aloha Airlines → American Airlines → American Eagle → ARFF → ASIG → BAX Global → Continental → Delta → DHL Express → Elite Line Services → Exec Air → Express Jet → FedEx → Frontier → Hawaiian → HMS Host → Jet Wash Inc. → Jet Blue → Jimsair → LPi → Midwest → Northwest → SDCRAA → Sky West → Southwest → SPC → United → UPS → US Airways
<b>Sub-BMPs</b>	- 01 <input type="checkbox"/> Notify Airport Operations (619-400-2710) and the Airport Authority Environmental Affairs Department (619-400-2784) if there is any evidence of illicit connections or illegal discharges.  - 02 <input type="checkbox"/> Provide the appropriate level of employee, tenant and public training or education in non-storm water discharge management, i.e., spill response and prevention, non-storm water pollution prevention, and hazardous materials management.  03 <input type="checkbox"/> Limit the availability of outdoor water supplies (hose bibs) and post with appropriate use signs to discourage uses that may pollute the storm drain system/receiving water.  - 04 <input type="checkbox"/> Ensure the site is free of illicit connections and illegal discharges.	
<b>STRUCTURAL TREATMENT BMPs:</b> Refer to BMP TC01 for information on structural treatment BMPs.		
<b>AUTHORIZED LOCATIONS TO IMPLEMENT BMPs TO PREVENT NON-STORM WATER DISCHARGES:</b>		
<input type="checkbox"/>	Implement BMPs for the prevention of non-storm water discharges within the entire airport boundary. In particular, do not discharge non-storm water to the designated areas (storm drains) as shown on the attached map.	
Date:		Version: 1.0



**Legend**

-  Catch Basin
-  Storm Drain
-  Storm Drain Line
-  Flow Direction



PROJECT NO.: 5012-08-0002

DATE: February 2008

DRAWN BY: SKR

CHECKED BY:



**San Diego  
International Airport**

**BMP SC-01  
Non-Stormwater Management**

FIGURE  
**SC-01**