

Mission Yogurt

SIC Codes	5812	Contact Information	
Primary Activity	Food & Beverage	Rob Ziemer	Manager - General
Drainage Areas	08		C 8583348333
Nearest MS4 Inlet		rob.ziemer2@gmail.com	
Address	3225 North Harbor Dr. San Diego, CA 92101		

Facility Description and Activities

1. Receives all food and product deliveries from Bradford directly to the store.
2. Mission yogurt does not have any outside refrigeration or storage.
3. Flagship picks up compost, waste, and recyclables directly from the store.
4. Mission yogurt does not use any oil and grease in their food operations.
5. Load and unload food products at T2 west and T1. Bradford delivers to level 1 hallway in T2 and to level 1 door at T1.
6. A member of the Green Concessions Program since 201
- 7.

Significant Materials/Activities Potentially Exposed to Storm Water

Potential Pollutant Sources

Material loading/unloading
Outdoor waste storage
Trash collection

Potential Pollutants

Food Waste
Recyclables
Trash

Best Management Practices Applicable to Facility

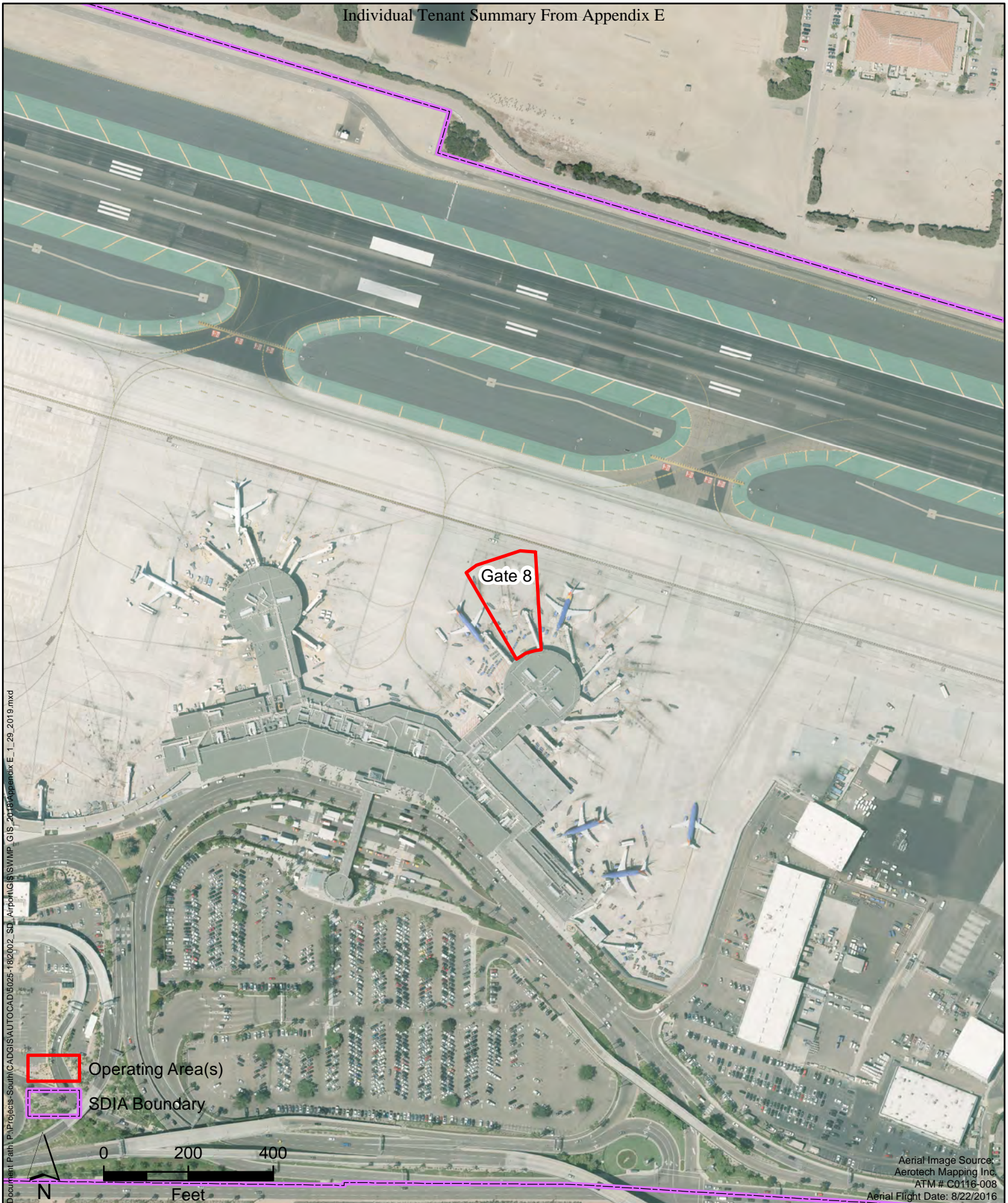
Activities

Non-Storm Water Management
Outdoor Loading/Unloading of Materials
Waste Handling & Disposal
Employee Training
Housekeeping
Safer/Alternative Products
Spill Prevention, Control & Clean Up

BMPs

SC01 - 1, 2, 4
SC06 - 1, 2, 6
SC08 - 1, 2, 3, 4, 5, 9, 10, 11, 12, 14
SC10 - 1, 2, 3, 4
SC18 - 1, 2, 3, 4, 5
SC19 - 1, 2
SR01 - 1, 2, 3, 5, 6, 7, 8, 9

* Appendix B provides descriptions for each BMP category.



Document Path: P:\Projects-South\CDGIS\AUTOCAD\025-18\0202 SD Airport\GIS\SWMP_GIS_2018\Appendix E_1_29_2019.mxd

- Operating Area(s)
- SDIA Boundary

PROJECT NO.:	5025-18-2002
DATE:	JANUARY 2019
DRAWN BY:	CAB
CHECKED BY:	AA/NP

wood.

SAN DIEGO INTERNATIONAL AIRPORT

**Mission Yogurt
Operating Areas**

FIGURE

E-25

Intentionally Left Blank