

Item 9



Rental Car Center Update



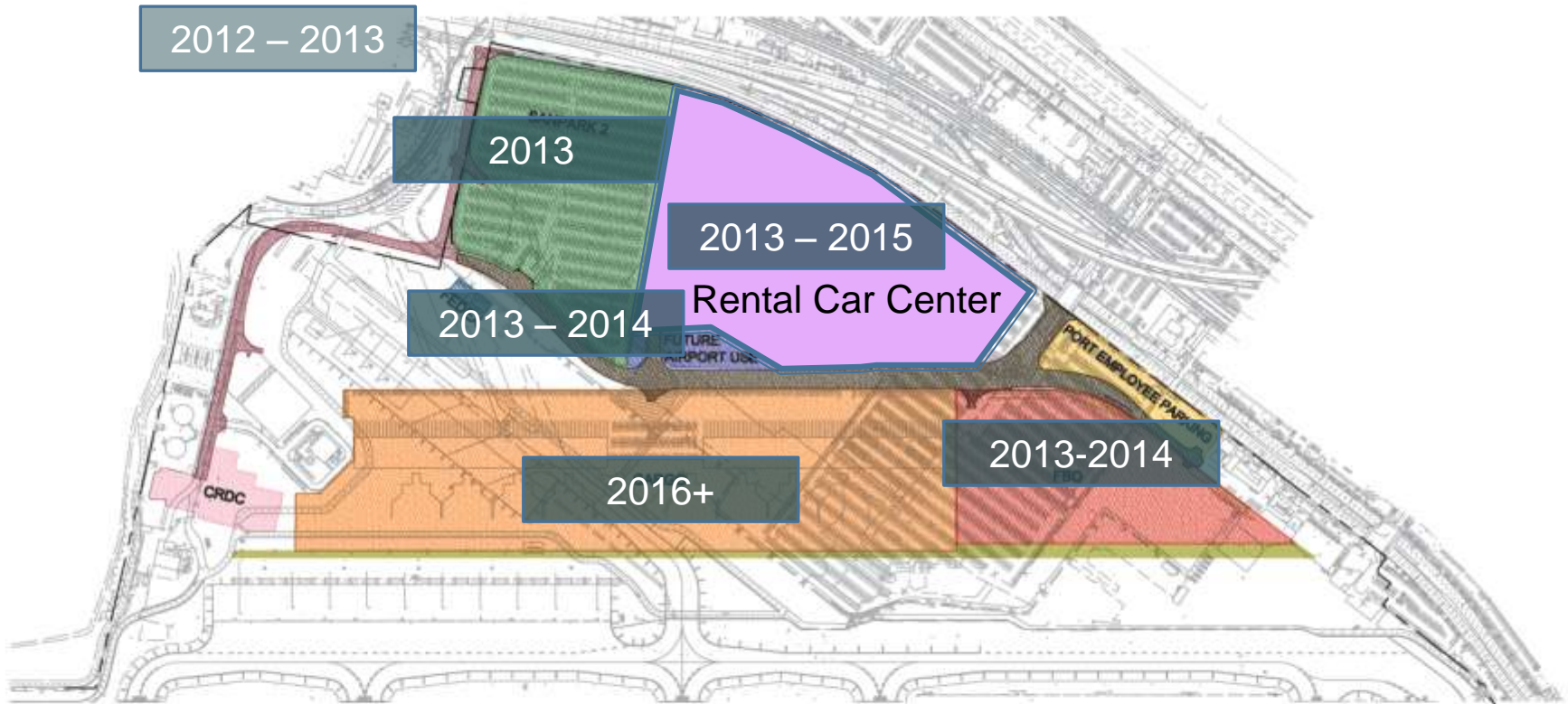
January 22, 2013

Presentation Topics

North Side Development

Rental Car Center (RCC) Update

Planned North Side Improvements





NORTH

GRAPHIC SCALE



SCALE: 1" = 400'

LEGEND

	CONRAC		PORT EMPLOYEE PARKING LOT
	FIXED BASE OPERATOR (FBO)		FUTURE AIRPORT USE
	SANPARK 2		NORTHSIDE INTERIOR ROAD
	CARGO		WASHINGTON STREET
	FEDEX		INTERIOR ROAD EAST
	CENTRAL RECEIVING/ DISTRIBUTION CENTER (CRDC)		



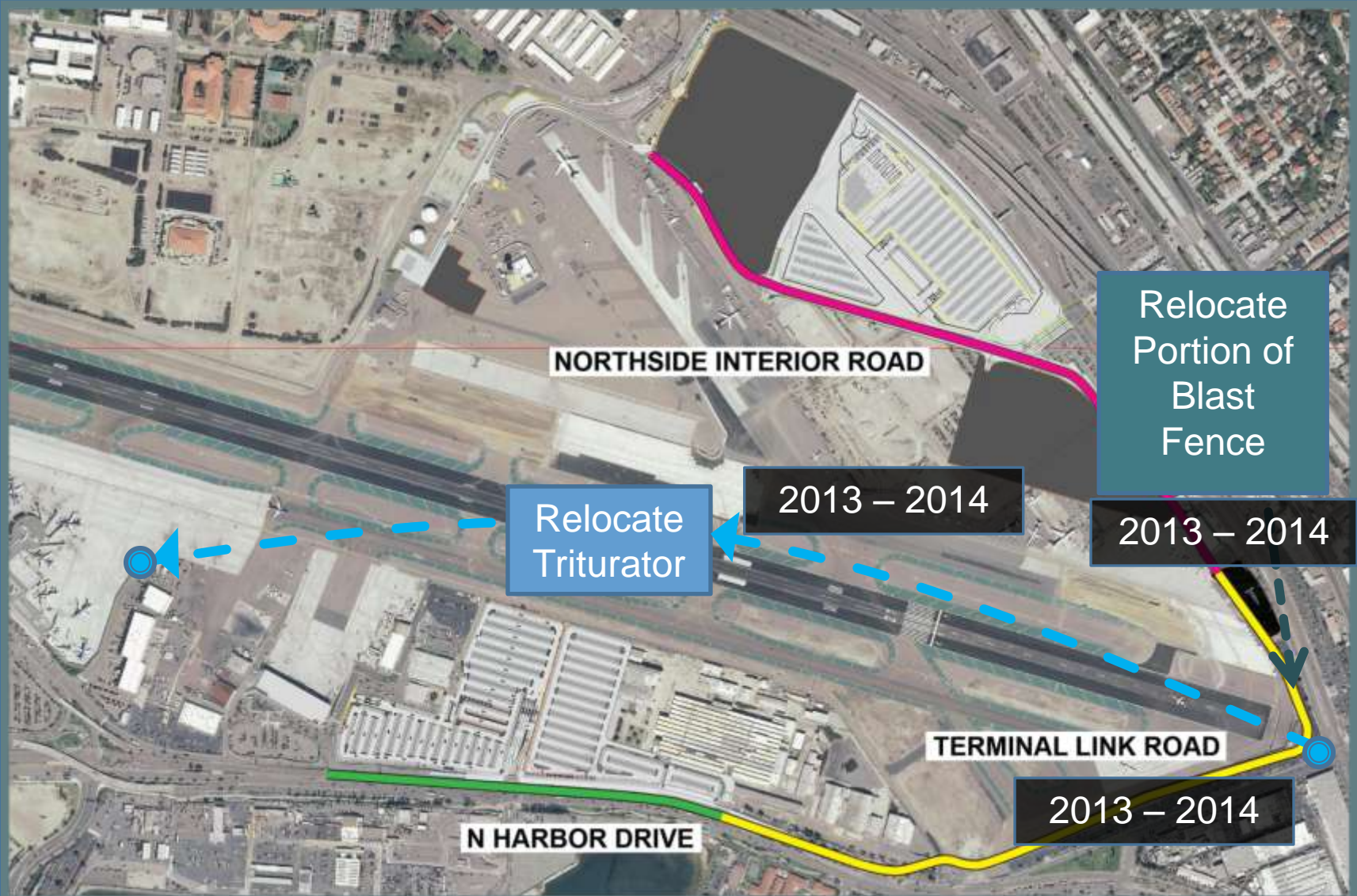
VA Consulting, Inc.

ENGINEERS · PLANNERS · SURVEYORS

8400 DAK CANYON SUITE 150 (949) 474-1400 TEL.
IRVINE, CA 92618 (949) 261-8462 FAX

EXHIBIT 1 - NORTH SIDE AREAS

Planned North Side Improvements



RCC Team

- Architect & Engineer (A&E)
 - Demattei Wong Associates (DWA)
- RAC Technical Representative
 - Jacobsen-Daniels
- Construction Manager-at-Risk (CMR)
 - Austin/Sundt, Joint Venture

Demattei Wong Architects



Honolulu



Nashville



Miami



Phoenix



Austin



Seattle-Tacoma



Ft. Lauderdale

Jacobsen/Daniels Associates



Kansas City



San Jose



New Orleans



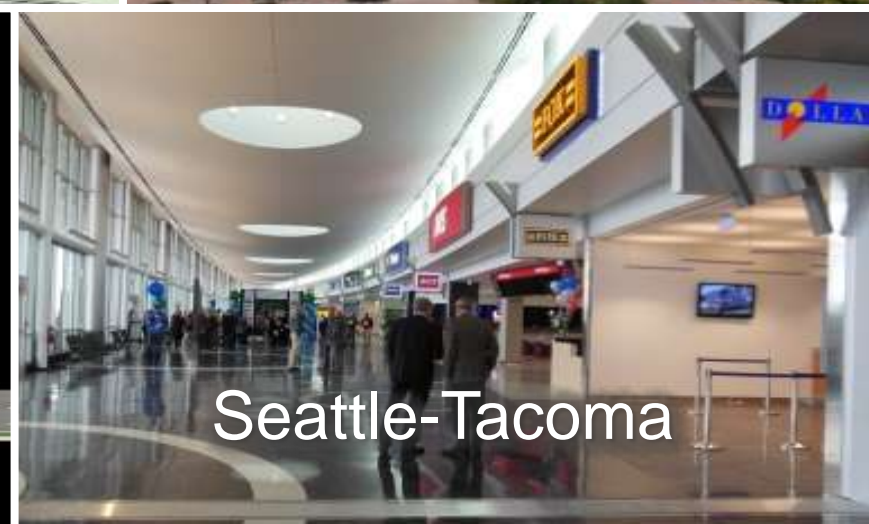
Chicago - O'Hare



Phoenix



Chicago - Midway



Seattle-Tacoma

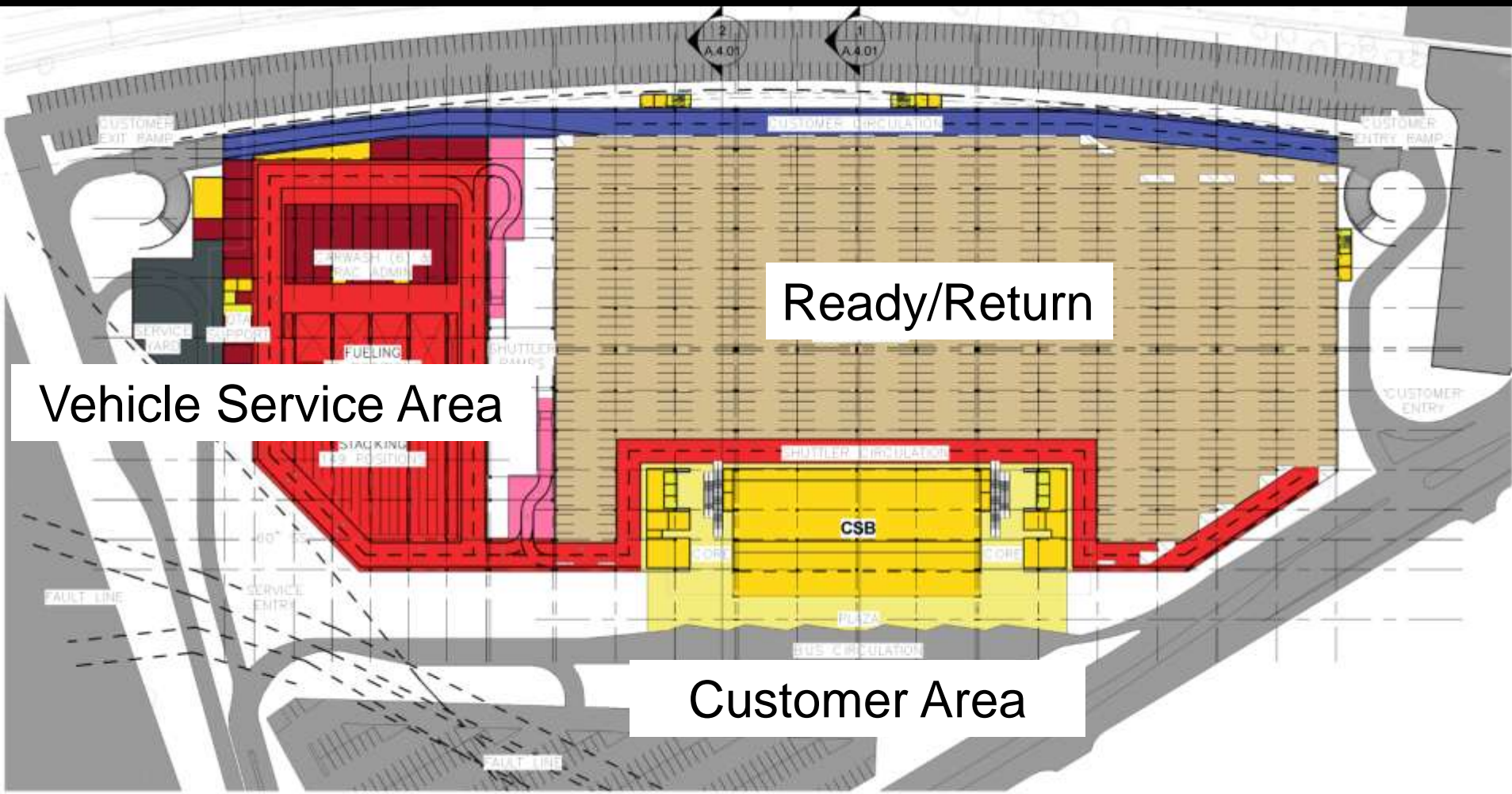
Construction Manager-at-Risk (CMR)



- Companies have a 30 year working relationship
- Prior working relationship with Demattei Wong
- ConRAC experience – ATL, AUS, BNA & PHX

Key Project Milestones

- December 2012 - End Schematic Design Phase
 - Design 30% Complete
 - NTE Estimate for the Rental Car Center
- May 2013 –End Design Development Phase
 - Design 65% Complete
 - Commence GMP Negotiations with CMR
- June 2013 – Commence Construction
- 100% Contract Documents – January 31, 2014
- RCC Facility Operational – July 2015



Key Functional Elements

Program Budget \$264M



Artist's Conceptual Rendering

QUESTIONS?

