

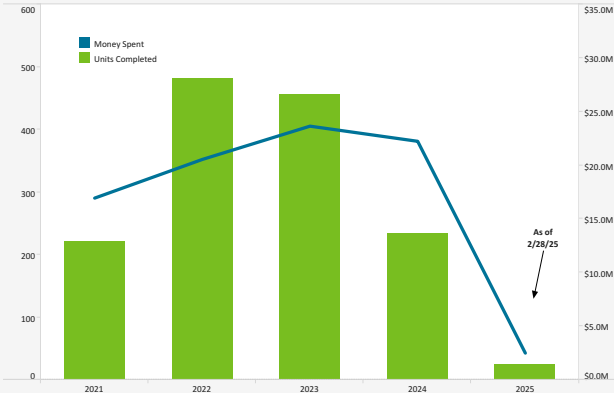
QUIETER HOME PROGRAM

Quieter Home Program As Of: 2/28/2025

Status of Homes	
Added this Month	5
Homes Completed this Month	12
Estimated Homes to Complete in CY 2024	300
Homes on Wait List	1,236
Total Homes Completed	5,861
Amount Spent on Multi-Family Units (USD) this Month	25,125

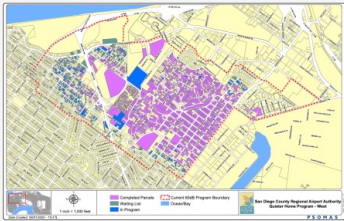
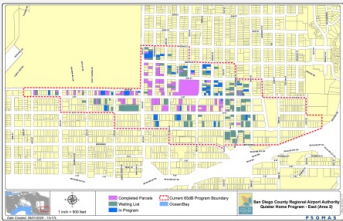
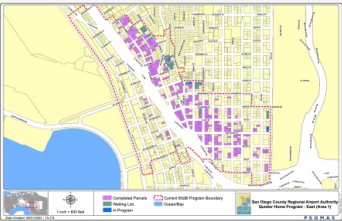
Project	Estimated Construction Start	# Homes
12.5 (QNRP)	HOLD for PA	3
13.5	Winter 2025	36
13.6	Spring 2025	33
13.7	Spring 2025	27
13.8	Summer 2025	26
13.9	Summer 2025	30
13.10	Fall 2025	22
13.11	Fall 2025	41
13.12	Winter 2026	28
14.1	Winter 2026	25
14.2	Spring 2026	62
14.3	Spring 2026	36
14.4	Summer 2026	32

From 2001 – 2009, \$89.8 Million Was Spent To Complete 1,334 Homes



QNRP: Quieter Non-Residential Program

Program Boundary Maps



Data Disclaimer: We do our best to ensure that the data we release is complete, accurate and useful. However, because we do not create the data, and because the processing required to make the data useful is complex, we are not liable for omissions, inaccuracies or changes in the data.

CURFEW VIOLATIONS

Curfew Violations (January - February 2025)

Date, Time	Airline	Aircraft Type	Status
1/2/2025, 11:49 PM	American Airlines	A21N	Pending Review
1/3/2025, 11:40 PM	Delta Air Lines	A21N	Pending Review
1/3/2025, 11:42 PM	Delta Air Lines	A21N	Pending Review
1/3/2025, 12:28 AM	Alaska Airlines	B39M	Pending Review
1/3/2025, 12:58 AM	Delta Air Lines	A321	Pending Review
1/6/2025, 11:51 PM	SkyWest Airlines	E75L	Pending Review
2/1/2025, 02:06 AM	FedEx Express	B763	Pending Review
2/7/2025, 11:57 PM	JetBlue Airways	A321	Pending Review
2/13/2025, 11:31 PM	American Airlines	A321	Pending Review
2/13/2025, 11:33 PM	Alaska Airlines	B39M	Pending Review
2/13/2025, 11:46 PM	SkyWest Airlines	E75L	Pending Review
2/13/2025, 11:50 PM	Delta Air Lines	A21N	Pending Review
2/13/2025, 11:52 PM	Southwest Airlines	B737	Pending Review
2/13/2025, 11:54 PM	Southwest Airlines	B737	Pending Review
2/14/2025, 01:25 AM	Alaska Airlines	B39M	Pending Review
2/14/2025, 12:28 AM	American Airlines	A21N	Pending Review
2/26/2025, 01:33 AM	Fly Mex	GLEX	Pending Review

Noise Curfew Violations: Any aircraft that departs after 11:30 p.m. and before 6:30 a.m. is subject to a penalty.

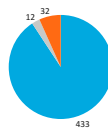
Annual Violations and Penalties Assessed (Year-to-Date)

Year	Total Violations	Fines Assessed
2021	52	\$204,000
2022	89	\$804,000
2023	141	\$1,004,000
2024	179	\$472,000
2025	17	\$0

Airline Category

A - Air
C - Cargo
G - G/A
M - Mil

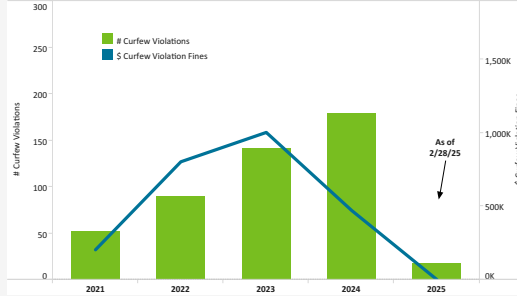
Violations by Airline Category (2021 - Present)



Fines Assessed by Airline Category (2020 - Present)



Curfew Violations and Penalties Assessed (by Year)



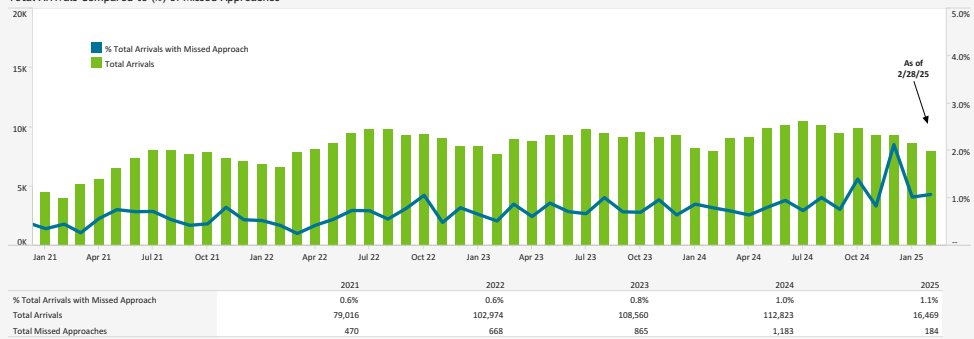
Airline Category

Airline Category	# Curfew Violations	\$ Curfew Violation Fines
A - Air	433	\$2,414,000
C - Cargo	12	\$2,000
G - G/A	32	\$66,000
None	1	\$2,000

MISSIED APPROACH STATISTICS

Total Arrivals Compared to (%) of Missed Approaches

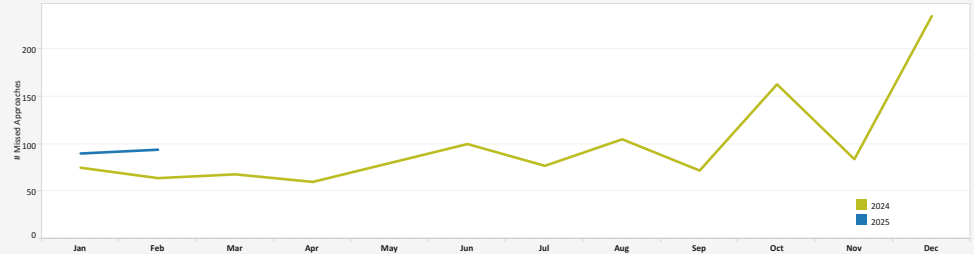
Missed Approaches: A procedure to maintain safety, initiated by the pilot or Air Traffic Control (ATC) for a pilot to abandon the approach to landing.



Missed Approach Location Statistics

	Dec		Jan		Feb			Dec		Jan		Feb	
	Day	Night	Day	Night	Day	Night		Day	Night	Day	Night	Day	Night
Between Noise Dot #1 - Noise Dot #2	2	3	1	1	1	0	Between 265°-295° Heading (Standard)	76		56		40	
Between Noise Dot #2 - JETT1	26	6	26	1	17	4	East of Airport	126		12		43	
Between JETT1 - Noise Dot #3	32	7	24	3	17	1	Left of 265°	25		20		11	
Between Noise Dot #3 - Noise Dot #4	18	0	16	0	10	0	Right of 295°	7		1		0	
Between Noise Dot #4 - Noise Dot #5	4	2	4	0	1	0							

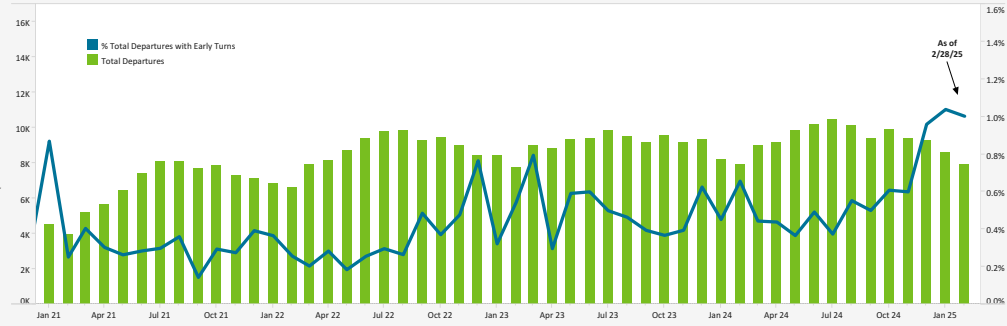
Total Missed Approaches



Data Disclaimer: We do our best to ensure that the data we release is complete, accurate and useful. However, because we do not create the data, and because the processing required to make the data useful is complex, we are not liable for omissions, inaccuracies or changes in the data.

EARLY TURN STATISTICS

Total Departures Compared to (%) of Early Turns



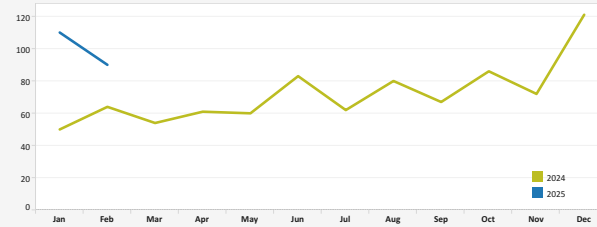
The Airport Authority has defined early turns as those aircraft that turn right prior to FAA Noise Dot #1 at the 295-degree heading or turn left prior to the FAA Noise Dot #3 at the 265-degree heading.

Departure Statistics

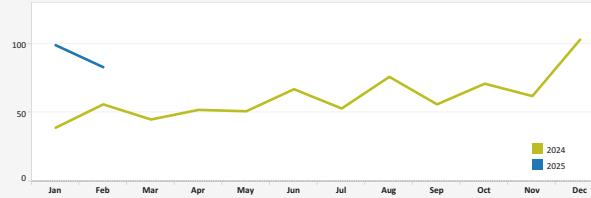
	Dec	Jan	Feb		Dec	Jan	Feb
Jets Turning Left	4,523	4,129	3,523	Caused by ATC Vectors	116	97	81
Between Z2000 and Noise Dots	617	472	481	Caused by Pilot Deviation	1	2	3
Compliant with Nighttime departure Heading (290°)	426	343	265	Caused by Weather	4	11	6
Not Nighttime Compliant - Over La Jolla	47	19	14				
Not Nighttime Compliant - East	62	15	87				
Not Nighttime Compliant - Straight Out	19	3	0				

Cause of Early Turns

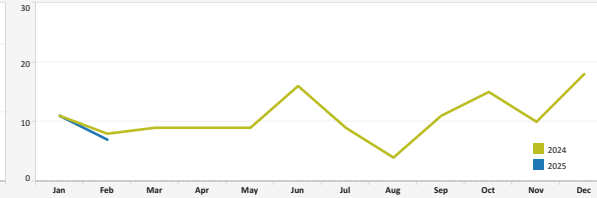
Total Early Turns



Over Point Loma



Over Mission Beach



Early Turns by Operator (February 2025)

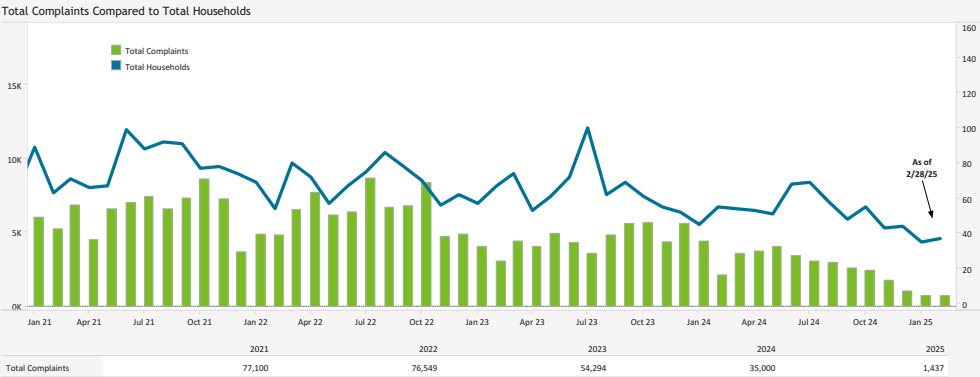
Airline	Left Early Turns	Total Operator Departures	% Departures with Left Early Turns
Southwest Airlines	23	4,796	0.5%
SkyWest Airlines	4	2,000	0.2%
United Airlines	4	1,450	0.3%
Alaska Airlines	5	1,380	0.4%
Delta Air Lines	13	1,348	1.0%
American Airlines	17	1,320	1.3%
General Aviation	7	573	1.2%
Frontier Airlines	1	390	0.3%
NetJets	1	344	0.3%
jetBlue Airways	1	196	0.5%
FedEx Express	1	163	0.6%
Flexjet	1	115	0.9%
Sun Country Airlines	2	42	4.8%
Pascan Aviation	1	6	16.7%
Pecos Aircraft Sales & Leasing LLC	1	2	50.0%
PREFERRED AVIATION LLC	1	2	50.0%

Early Turns by Operator (February 2025)

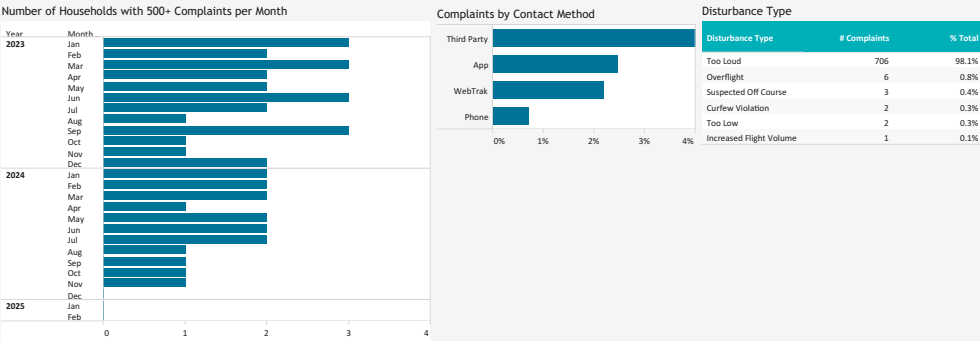
Airline	Right Early Turns	Total Operator Departures	% Departures with Right Early Turns
United Airlines	1	1,450	0.1%
Delta Air Lines	1	1,348	0.1%
American Airlines	1	1,320	0.1%
General Aviation	1	573	0.2%
FedEx Express	1	163	0.6%
DOBE ENTERPRISES LLC	1	4	25.0%
M INVESTMENTS LLC	1	3	33.3%

Data Disclaimer: We do our best to ensure that the data we release is complete, accurate and useful. However, because we do not create the data, and because the processing required to make the data useful is complex, we are not liable for omissions, inaccuracies or changes in the data.

NOISE COMPLAINT STATISTICS



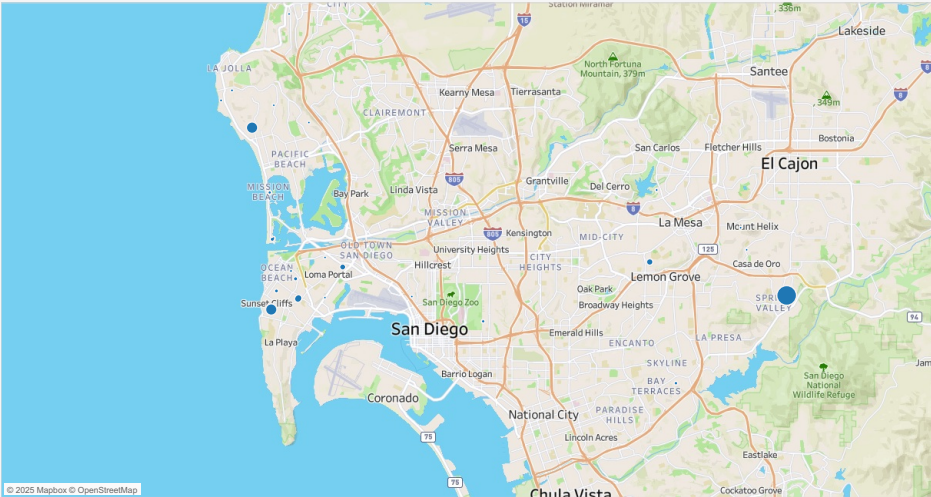
The Authority reports all complaints.



Number of Complaints by Neighborhood (February 2025)

Neighborhood	Total Complaints	Total Households
Grand Total	720	37
Spring Valley	331	1
Muirlands	99	1
Sunset Cliffs	97	1
Point Loma Heights	74	4
La Mesa	30	3
Loma Portal	22	2
Mission Beach	14	3
Linda Vista	8	1
Beach Barber Tract	6	3
Bay Terraces	5	1
South Park	5	1
Del Mar	4	1
Bankers Hill	3	2
Del Mar Heights	3	1
Ocean Beach	3	1
Bird Rock	2	1
Chollas Creek	2	1
Hillcrest	2	1
La Jolla Heights	2	1
Pacific Beach	2	1
Casa De Oro-Mount Helix	1	1
Golden Hill	1	1
La Jolla Alta	1	1
Liberty Station	1	1
Little Italy	1	1
South Park	1	1

Location of Complaints



Data Disclaimer: We do our best to ensure that the data we release is complete, accurate and useful. However, because we do not create the data, and because the processing required to make the data useful is complex, we are not liable for omissions, inaccuracies or changes in the data.