

Landmark Aviation

SIC Codes	4512, 4522	Contact Information	
Primary Activity	Corporate General Aviation	Carrie Campbell	Manager
Drainage Areas	1, 3	P 6199540337	
Nearest MS4 Inlet	200 - 1000 ft.	ccampbell@landmarkaviation.com	
Address	2904 Pacific Hwy. San Diego, CA 92101	Reginald Bridges	Assistant Manager
		P 6192470296	
		Rbridges@landmarkaviation.com	

Facility Description and Activities

1) New building on 3300 Terminal Link Rd has 2 office buildings and 5 hangars 2) Building 1 – FBO Lobby and customer offices 3) Hangars 1 – 5 are used for AC fuel truck to 3 JetA and 1 Avgas truck. 15K gallons of JetA and 750 Gallons of AVGAS 6) One dual product truck for Diesel and Auto gas a total of 825 gallons 7) Secured covered cabinets located near fuel trucks for hazardous waste 3 cabinets total 8) Asbury Environmental collects waste oil. Lamb Fuels collect unused unleaded gasoline, jet fuel and diesel for recycling. Oil Recycling collects absorbent with oil. (Company may change to Safety Kleen after the move). 9) Eye wash stations and showers located in all 5 hangars 10) Jet Wash no longer does business here and CBF continues to do mostly dry wash 11) GSE equipment is fueled with Diesel or unleaded 3 to 4 times weekly. Fuel is now purchased from Allied at the rack as needed. Most equipment is now electric. 12) Aircraft lavatories are serviced by Landmark. Landmark disposes of lavatory waste at the triturator. 13) Tenant has a Spill Prevention, Control, and Countermeasure Plan – it is in the process of being revised. It will be completed within the 6 month time frame. 14) CAS is a subtenant to Landmark.

Significant Materials/Activities Potentially Exposed to Storm Water

Potential Pollutant Sources

Aircraft sanitary services
Building & Ground maintenance
Cargo handling
Drainage system maintenance
Equipment storage
Fluid leaks
Fuel spills, Fuel transfer
Fuel storage
Herbicide usage
Material loading/unloading
Outdoor waste storage

Potential Pollutants

Anti Freeze
Battery Acid
Cleaning Solutions
Floatables
Food Waste
Fuel
Fuel (Diesel)
Fuel (Gas)
Fuel (Jet)
Hydraulic Fluids
Lavatory Chemical Wastes

Pesticide usage
 Tank fuel transfer
 Trash collection
 Vehicle parking
 Water/Fuel mixture within berm

Tenant Summaries

Lavatory Chemicals
 Lavatory Wastes
 Lubricants
 Oil & Grease
 Pesticides/Herbicides/Fertilizers
 Recyclables
 Sediment
 Solvents
 Trash

Best Management Practices Applicable to Facility

Activities

Non-Storm Water Management
 Outdoor Equipment Ops Maintenance Areas
 Aircraft, Ground Vehicle & Equipment Maintenance
 Aircraft, Ground Vehicle & Equipment Fueling
 Aircraft, Ground Vehicle & Equipment Cleaning
 Outdoor Loading/Unloading of Materials
 Outdoor Material Storage
 Waste Handling & Disposal
 Building & Ground Maintenance
 Employee Training
 Lavatory Service Operation
 Parking Lots
 Drainage System Maintenance
 Housekeeping
 Safer/Alternative Products
 Spill Prevention, Control & Clean Up
 Structural Treatment Control BMPs

BMPs

SC01 - 1, 2, 4
 SC02A - 1, 2
 SC02B - 1, 2, 3, 4, 5, 6, 7, 8, 9, 10, 11, 12, 13
 SC03 - 1, 2, 3, 4, 5, 6, 7, 8, 9, 10, 11
 SC04 - 1, 2, 3, 4, 5, 6, 7, 8
 SC06 - 1, 2, 3, 4, 6, 7
 SC07 - 1, 2, 3, 6, 7, 8, 9, 10, 11, 12
 SC08 - 1, 2, 3, 4, 5, 6, 7, 8, 9, 10, 11, 12, 14
 SC09 - 1, 2, 3
 SC10 - 1, 2, 3, 4
 SC11 - 3, 4, 5, 6, 7, 8, 9, 10
 SC16 - 1, 2, 6, 11, 12
 SC17 - 2, 3, 4, 5, 6, 7
 SC18 - 1, 2, 3, 4, 5, 6, 7, 8, 9
 SC19 - 1, 2
 SR01 - 1, 2, 3, 4, 5, 6, 7, 8, 9
 TC01 - 1, 2, 3, 4

* Appendix B provides descriptions for each BMP category.

Structural Control measures used by facility:

Located onsite are 7 bioswales, 7 pervious pavement and infiltration systems, and 1 Contech storm filter.

Materials Storage Area

Secured covered cabinets for haz waste (north ramp near Landmark fuel trucks)

Materials Storage Amounts

Hazwaste and waste oil may be stored over 55 gallons

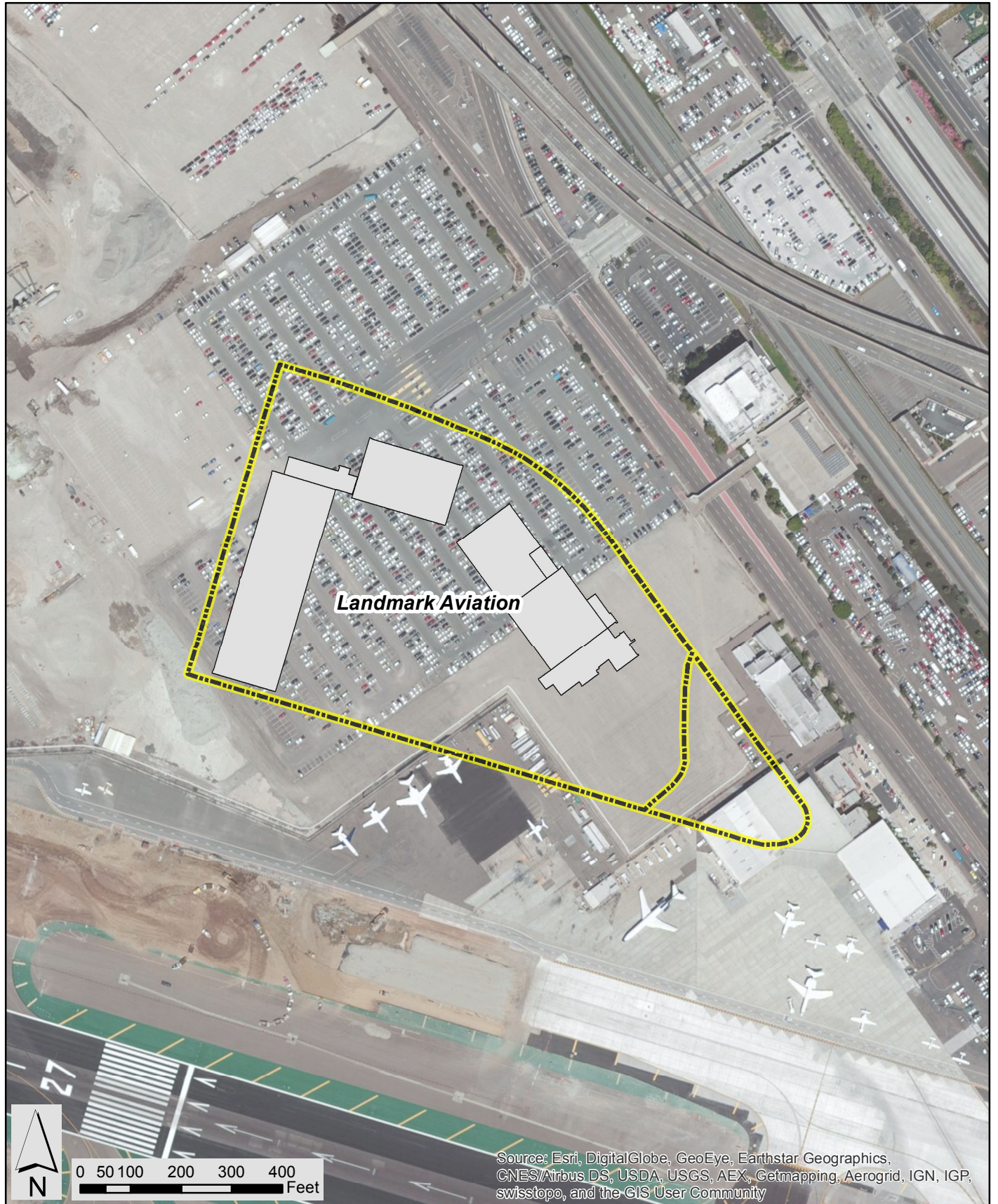
3 15,000 gallon JetA fuel trucks parked in Landmark area

1 750 gallon AVGAS fuel truck parked in Landmark area

Shipping/Receiving Area

Landmark

Intentionally Left Blank



PROJECT NO.:
5025-13-0031
DATE: JUNE 2015
DRAWN BY: RMH
CHECKED BY: AJA

amec foster wheeler



**Landmark Aviation
Operating Areas**
San Diego International Airport

FIGURE

E-23

Intentionally Left Blank