


BMP SC02B	AIRCRAFT, GROUND VEHICLE, AND EQUIPMENT MAINTENANCE	
PURPOSE: To prevent or reduce the discharge of pollutants to storm water from any type of aircraft, vehicle, or equipment maintenance and repair, including ground vehicle and equipment painting/stripping and floor washdowns.		TARGETED ACTIVITIES: ➔ Aircraft Maintenance ➔ Vehicle Maintenance ➔ Equipment Maintenance
POLLUTION PREVENTION: Implement the following pollution prevention practices and BMPs to prevent discharges of pollutants to the storm water collection system: <ul style="list-style-type: none"> <input type="checkbox"/> Provide covered maintenance areas when designing new facilities or upgrading existing facilities. Utilize indoor areas, lean-tos, or portable covers. <input type="checkbox"/> Perform the activity during dry periods. <input type="checkbox"/> Use non-toxic, biodegradable chemicals or products for maintenance, minimize or eliminate the use of solvents and substitute materials with less hazardous properties where feasible (e.g. non-chlorinated solvents or water-based solvents instead of chlorinated solvents, non-caustic detergents instead of caustic cleaners, or cleaning without liquid cleaners like a wire brush). <input type="checkbox"/> Recycle or properly dispose of the following: greases, oils, antifreeze, brake fluid, cleaning solutions, hydraulic fluid, batteries and transmission fluid. Drain and crush oil filters and oil containers before recycling or disposal. Store crushed oil filters, empty lubricant containers, and cracked batteries in a covered, acid-proof container (for batteries), and leak-proof covered secondary containment (for all waste). <input type="checkbox"/> DO NOT HOSE DOWN WORK AREAS TO THE STORM DRAIN SYSTEM. Notify Airport Operations (619-400-2710) and the Airport Authority Environmental Affairs Department (619-400-2784) if there is any evidence of the disposal of solvents, cleaning solutions or other materials to the storm drain, or hosing down of work areas. 		POLLUTANTS of CONCERN: ➔ Battery Acid ➔ Fuel ➔ Metals ➔ Nutrients ➔ Oil and Grease ➔ Organics ➔ Paint ➔ Sediments ➔ Solvents/Cleaning Solutions ➔ Vehicle Fluids
OPERATIONS: Sub-BMPs <ul style="list-style-type: none"> - 01 <input type="checkbox"/> Employees are trained in safe vehicle and equipment operations and maintenance. - 02 <input type="checkbox"/> Aircraft, vehicle and equipment maintenance areas should not be located directly in the path of storm drains. - 03 <input type="checkbox"/> Perform maintenance of aircraft, ground vehicles and equipment in designated areas that are either indoors or are covered, bermed, enclosed, or sloped/positioned away from the MS4. - 04 <input type="checkbox"/> Perform regular equipment inspection and testing. - 05 <input type="checkbox"/> Inspect aircraft, vehicles and equipment on a regular basis for fluid leaks. Place drip pans under leaks as needed. 		APPLICABLE TENANTS/ DEPARTMENTS: ➔ ACE ➔ Air Canada ➔ Alaska ➔ Allegiant ➔ Allied ➔ American Airlines ➔ ARFF ➔ ASIG ➔ British Airways ➔ Delta ➔ DHL ➔ Elite Line Service ➔ Envoy ➔ FedEx

<div>- 06 <input type="checkbox"/></div> <div>- 07 <input type="checkbox"/></div> <div>- 08 <input type="checkbox"/></div> <div>- 09 <input type="checkbox"/></div> <div>- 10 <input type="checkbox"/></div> <div>- 11 <input type="checkbox"/></div> <div>- 12 <input type="checkbox"/></div> <div>- 13 <input type="checkbox"/></div>	<p>Maintain aircraft, vehicles and equipment in good condition to prevent or correct any leakage of oil or other fluids.</p> <p>Use drip pans during maintenance.</p> <p>Do not leave drip pans containing fluids or other open containers lying around. Regularly transfer fluids for recycling or proper disposal.</p> <p>Minimize the use of solvents or use less toxic solvents whenever possible. If solvents cannot be avoided, clean or drain parts in self-contained sinks or drum units, and check those units regularly for leaks.</p> <p>Store mechanical parts, equipment and vehicles awaiting repair under cover and away from storm drains.</p> <p>Store spill response materials in maintenance areas and on maintenance vehicles. Adequately collect/remove absorbent materials from area after use and dispose of them in an appropriate manner.</p> <p>Remove fluids and batteries from salvage vehicles and equipment and dispose of properly.</p> <p>Properly dispose of obsolete and inoperable vehicles and equipment.</p>	<div>➔ Flagship</div> <div>➔ Frontier</div> <div>➔ Hawaiian</div> <div>➔ HMS Host</div> <div>➔ IAS</div> <div>➔ JAL</div> <div>➔ Jet Blue</div> <div>➔ Landmark</div> <div>➔ SDCRAA</div> <div>➔ Seaport</div> <div>➔ Siemens</div> <div>➔ Sky West</div> <div>➔ Southwest</div> <div>➔ Spirit</div> <div>➔ Sun Country</div> <div>➔ SSP</div> <div>➔ United</div> <div>➔ UPS</div> <div>➔ US Airways</div> <div>➔ Virgin America</div> <div>➔ Volaris</div> <div>➔ WestJet</div>
STRUCTURAL TREATMENT BMPs: Refer to BMP TC01 for information on structural treatment BMPs.		
BMP FREQUENCIES/EQUIPMENT/TOOLS: Maintenance is conducted as needed using either indoor shops, or under temporary or permanent cover when available and feasible. Equipment/tools to implement BMPs include drip pans, outdoor sheds, storage containers, tarps, secondary containment devices, spill kits and drums.		
AUTHORIZED AIRCRAFT, GROUND VEHICLE AND EQUIPMENT MAINTENANCE LOCATIONS:		
<div><input type="checkbox"/></div>	<p>Use only the designated areas for aircraft, ground vehicle and equipment maintenance as shown in the attached map.</p>	
Date:		Version: 2.0

Airport Boundary

ACE

ASIG

Alaska

Allied Aviation

American

Delta

ELS

Flagship

HMS Host

Jet Blue

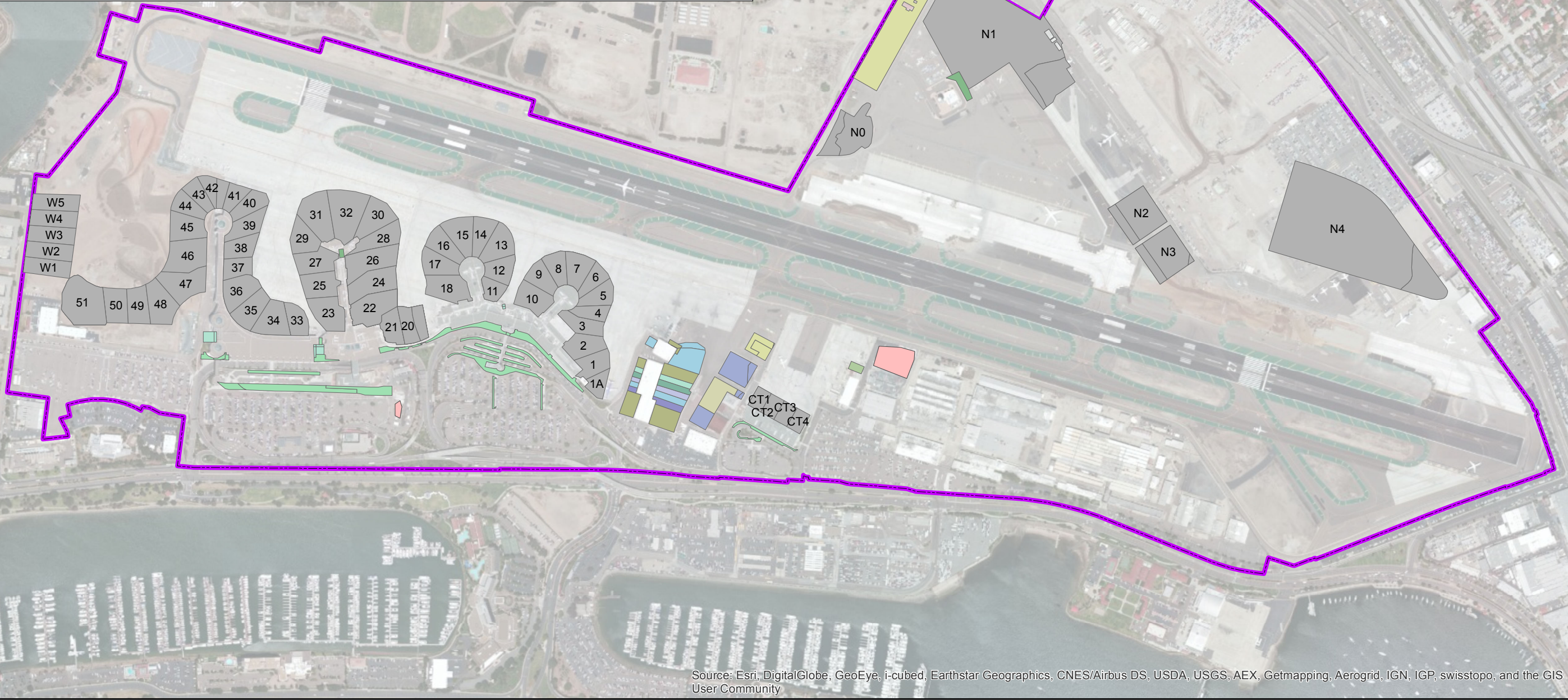
Port Parking

Southwest

US Airways

United

Tenant Gate Areas	
Tenant	Gate
Air Canada	22
Alaska	11, 13, 14, 15, 16, 17, 18
Allegiant	23
American/Envoy	27, 28, 29, 31, 32
ARFF	N0
British Airways	20
Delta	41, 42, 47, 48, 49, 50, 51, W3, W4, W5
DHL	N3
FedEx	N1
Frontier	12
Hawaiian	51
IAS	N2, N3
JAL	20, 22
Jet Blue	36, 37
Landmark Aviation	N4
SDCRAA	19
SeaPort	11C
Siemens	7, 8
SkyWest	34, 35, 36, 37, 38
Southwest	1, 1A, 2, 3, 4, 5, 6, 7, 8, 9, 10
Spirit	20, 21, 22, 24, 26, 30
SSP	11, 12
Sun Country	51
United	38, 39, 40, 43, 44, 45, 46, W1, W2
UPS	N2, N3
US Airways	33, 34, 35
Virgin America	25
Volaris	20, 21, 22
West Jet	22, 24, 26



Source: Esri, DigitalGlobe, GeoEye, i-cubed, Earthstar Geographics, CNES/Airbus DS, USDA, USGS, AEX, Getmapping, Aerogrid, IGN, IGP, swisstopo, and the GIS User Community

Intentionally Left Blank