

FlagShip

SIC Codes 4581
 Primary Activity Janitorial
 Drainage Areas 7, 8, 9, 10, 11, 12, 15
 Nearest MS4 Inlet < 200 ft.
 Address 3835 North Harbor Dr. #130
 San Diego, CA 92101

Contact Information
 Gustavo Solis Manager - Account
 P 6192986793 C 9493900190
 gsolis@Flagshipinc.com

 Ramon Gaxiola Unknown
 P 6192986793
 rgaxiola@flagshipinc.com

Facility Description and Activities

1. FlagShip (formerly SPC) is responsible for cleaning the restrooms inside the airport and those on the airside. They empty all trash cans and recycling cans inside and outside the airport, but not the dumpsters. All trash is disposed in dumpsters located in T1 (Compactor/Segregation Area) and T2 (Gate 23, Gate 48, and Gate 25). Flagship does not use dumpster in T2 parking lot near USO.
2. FlagShip cleans the floors and carpets inside the airport, except for those in gift shops or food courts, and they sweep sidewalks up to the curb on the landside and the airside using an industrial dry vacuum cleaner. They do not clean the baggage make up areas. They are also responsible for sweeping 10 ft from the building along on the land and airside.
3. Pressure Washing (information from Airport's Public Relations Specialist, updated 5/27/15): Flagship performs pressure washing Tuesdays through Saturdays between 11:00 pm and 4:00 am, and is scheduled every 30 to 45 days. Locations that receive pressure washing include terminal smoking areas and all baggage claim sidewalks. FlagShip also power-washes the trash compactor area near the Commuter Terminal, the dumpster area between Terminal 2 East and West, the HMS Host grease container area near Gate 27, and the dumpster area at Terminal 1, and the grease container. Carpet cleaning wastewater is also disposed of at the dewatering bin at the trash compactor area. The Airport Authority works with Flagship to use AC condensation water for the pressure washing operation. The AC condensation water is collected into 55 gallon drums, and once full the water is transferred to the pressure washer reservoirs. In 2014, more than 5,225 gallons of AC condensate was recovered and reused for a variety of purposes in airport maintenance, including pressure washing. FlagShip owns two pressure washers. This equipment is used to power-wash the sidewalks on the landside and the airside. The power washers are stored at Gate 17 and covered with a tarp. One washer is used 4 nights every week and the other is used 3 nights every week. During power washing, water is heated to 200 degrees, which probably cools to 140-150 degrees by the time it reaches the surfaces, and at a pressure of 3,000 psi. The pressure washers used by Flagship are equipped with a water recollection and filtration system. They are designed to collect all residual water, filter, recycle and re-use the water throughout the operation of the equipment. An estimated 80-100 gallons of recovered AC condensate water is used per day washing occurs. The reclaimed AC condensate is not potable water and therefore not a violation of state and city water restrictions. Before starting the pressure washing operation, Flagship staff locates all storm water run offs and covers the areas with berms or mats. They then remove and sweep all trash, debris and cigarette butts. Next, staff will determine the path that the water will run and will funnel the water using berms and bags into the vacuum/reclaim system. Once the job is complete, the wash water is vacuumed up, hoses are drained into the sanitary sewage system and equipment is cleaned. The wash

water is vacuumed up by a separate vacuum machine. Water booms are used during this operation to avoid discharges to the storm drains. Wash water is dumped to the dewatering bin at the trash compactor area. 5. Republic (a vendor to SDCRAA) is the company that collects the dumpster from the airport, which also performs a power washing on a schedule that does not coincide with Flagship's. 6. FlagShip also transports and unloads trash/recycling from trash cart system located between Terminal 1 and Terminal 2. 7. Diesel is used to heat water on the power washers; gasoline is used in the engine of the power washers. 8. FlagShip contracts SoCal to clean windows at T2W every 3 to 6 months using FlagShip equipment. All wash waters are collected and disposed of offsite by SoCal. SoCal will be removed and replaced by a separate vendor/FlagShip Staff. 9. Flagship uses battery operated pieces of equipment (vacuum, carpet cleaners, hard floor surface cleaners). 10. A truck mounted carpet extractor is used to clean carpets in terminals and is stored at Gate 17. All water is disposed of in T1 sump (via trash compactors). 11. All outdoor storage is at Gate 17 and some indoor storage is at this location as well. 12. Flagship is the only authorized user of the trash compactor located at the loading dock between gates 23 and 33. It is exclusively for janitorial and concession waste that comes from the terminals. Flagship Airport Services is the only authorized user of the compactor. Air carriers and other tenants that use Airport waste and recycling disposal units must use the main disposal facility located between the Commuter Terminal and Terminal 1. 13. Flagship has an oncall contract to pressure wash and scrub along the ramp and apron. 1

4. Flagship just recently acquired a new pressure washing truck, which is equipped with a vacuum water reclaiming system, and a series of two drums for solids and grease removal, and 4 filters for filtering water for direct reuse. The pressure washing truck is currently staged in the cargo area, but will be moved to Gate 17 once fully operational. Filters are changed once per month and returned to the manufacturer for recycle.

Significant Materials/Activities Potentially Exposed to Storm Water

<u>Potential Pollutant Sources</u>	<u>Potential Pollutants</u>
Equipment storage	Cleaning Solutions
Fluid leaks	Floatables
Fuel spills,Fuel transfer	Food Waste
Outdoor apron washdown	Fuel
Outdoor washdown	Fuel (Diesel)
Outdoor waste storage	Medical Waste
Ramp/Taxiway scrubbing	Oil & Grease
Tank fuel transfer	Recyclables
Trash collection	Trash

Best Management Practices Applicable to Facility

<u>Activities</u>	<u>BMPs</u>
Non-Storm Water Management	SC01 - 1, 2, 4
Outdoor Equipment Ops Maintenance Areas	SC02A - 1, 2

	Tenant Summaries
Aircraft, Ground Vehicle & Equipment Maintenance	SC02B - 1, 2, 3, 4, 5, 6, 10, 11, 12, 13
Aircraft, Ground Vehicle & Equipment Fueling	SC03 - 1, 2, 4, 5, 6, 7, 8, 9, 10
Aircraft, Ground Vehicle & Equipment Cleaning	SC04 - 1, 2, 3, 4, 5, 6, 7, 8
Outdoor Material Storage	SC07 - 1, 2, 3, 7, 12
Waste Handling & Disposal	SC08 - 1, 2, 3, 4, 5, 7, 8, 9, 10, 11, 12, 13
Building & Ground Maintenance	SC09 - 4
Employee Training	SC10 - 1, 2, 3, 4
Outdoor Wash down/Sweeping	SC12 - 1, 3, 5, 6, 7, 8, 9
Housekeeping	SC18 - 1, 2, 3, 4, 5, 6, 7, 8, 9
Safer/Alternative Products	SC19 - 1, 2
Spill Prevention, Control & Clean Up	SR01 - 1, 2, 3, 4, 5, 6, 7, 8, 9, 10

* Appendix B provides descriptions for each BMP category.

Structural Control measures used by facility:

Air conditioning condensate is recaptured with reclamation drums and reused for power washing.

Materials Storage Area

Outdoor storage in rain proof storage sheds at Gate 17

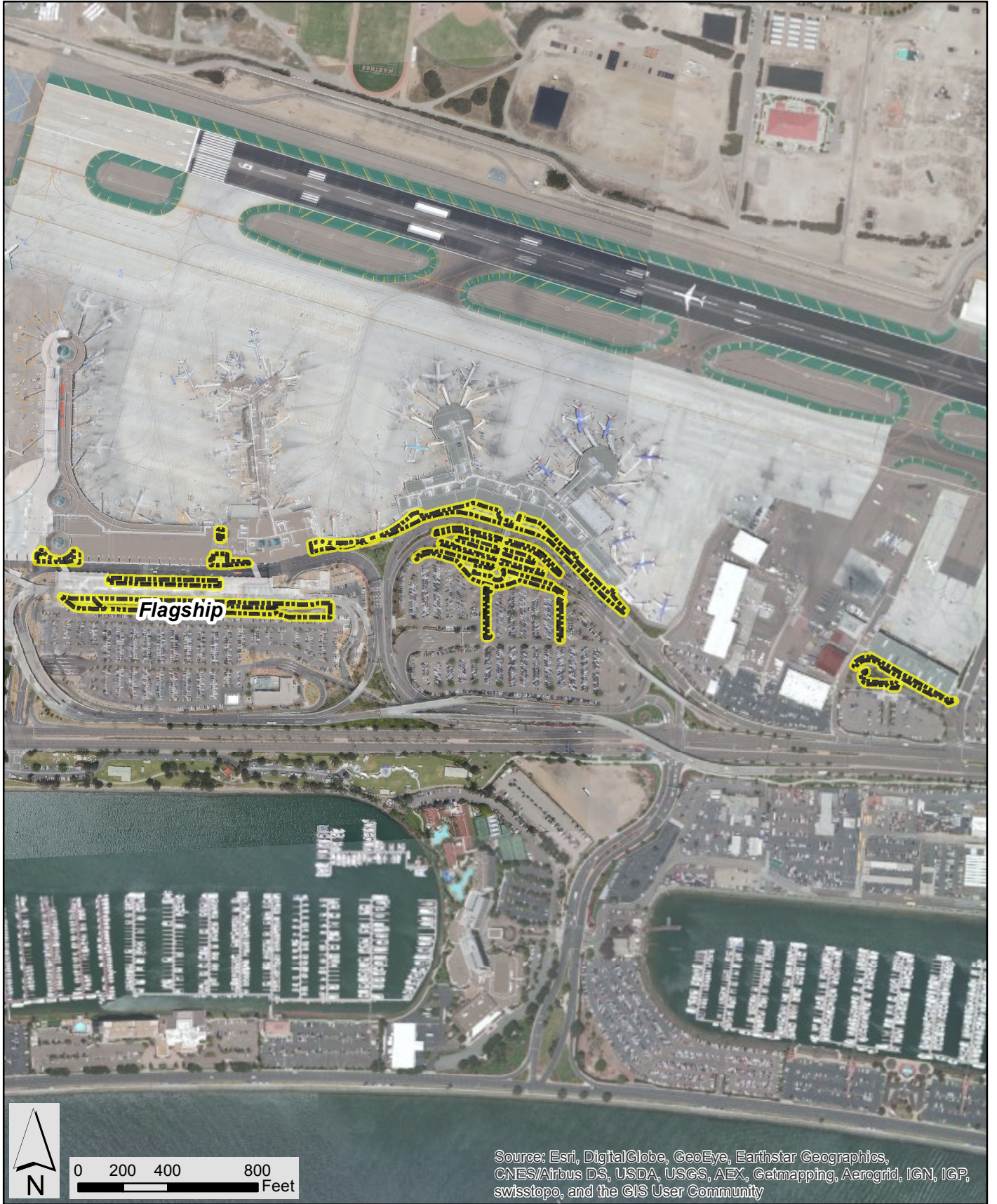
Materials Storage Amounts

No materials recorded over 55 gallons

Shipping/Receiving Area

Bradford; receives approximately 3,500 cubic feet of goods for Flagship monthly

Intentionally Left Blank



PROJECT NO.:
5025-13-0031

DATE:
JUNE 2015

DRAWN BY:
RMH

CHECKED BY:
AJA



Flagship
Operating Areas

San Diego International Airport

FIGURE
E-15

Intentionally Left Blank