

Tenant Summary Sheet

Tenant:

West Jet

SIC Code: 4512, 4522

Primary Activity: Passenger Carrier

Drainage Area: 12

Nearest MS4 inlet: 200-1000 feet

Contact: Phil Delk, Station Manager

E: pdelk@atsstl.com, P: 619-220-0164, C: 310-227-7331

Secondary Contact: Alioune Sow, Regional Manager

P: 310-849-9935

Address: 3707 N. Harbor Dr. T2E
San Diego, CA 92101

Tenant Description and Primary Industrial Activities:

1. Operate out of Gate 22 but occasionally use 21. Gate 22 is shared by multiple airlines. Hawaiian and Allegiant also use Gate 22.
2. All equipment maintenance is done in the GES maintenance shop area by GES. Daily vital fluid checks are performed by ATS staff and monthly Preventive Maintenance Inspections are conducted by Tom Mescuranis of GES.
3. Fueling is conducted by ASIG at the Gate. ATS conducts monthly station safety audits which include observing fueling. ATS requests a poundage of fuel to be put into the aircraft prior to each fueling.
4. Cleaning of vehicles is done at the triturator facility. No aircraft cleaning is performed at SIDA.
5. All ground handling activities are performed by ATS.
6. All aircraft maintenance is performed by Pacific Aviation.
7. Tenant uses the Airport Storm Water Management Plan and does not have a Hazardous Business Plan.

Significant Materials Potentially Exposed to Storm Water:

Potential Pollutant Sources

Aircraft fueling
Aircraft maintenance
Aircraft sanitary services
Fluid leaks from aircraft
Fuel spills

Potential Pollutants

Lavatory wastes, Battery acid, Lavatory chemicals,
Oil and Grease, Lubricants, Fuel, Sediment,
Antifreeze,

Best Management Practices and Current Structural Controls:

The list below identifies the BMP categories and specific BMPs that are applicable to West Jet. Appendix B provides a description of each BMP category.

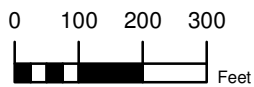
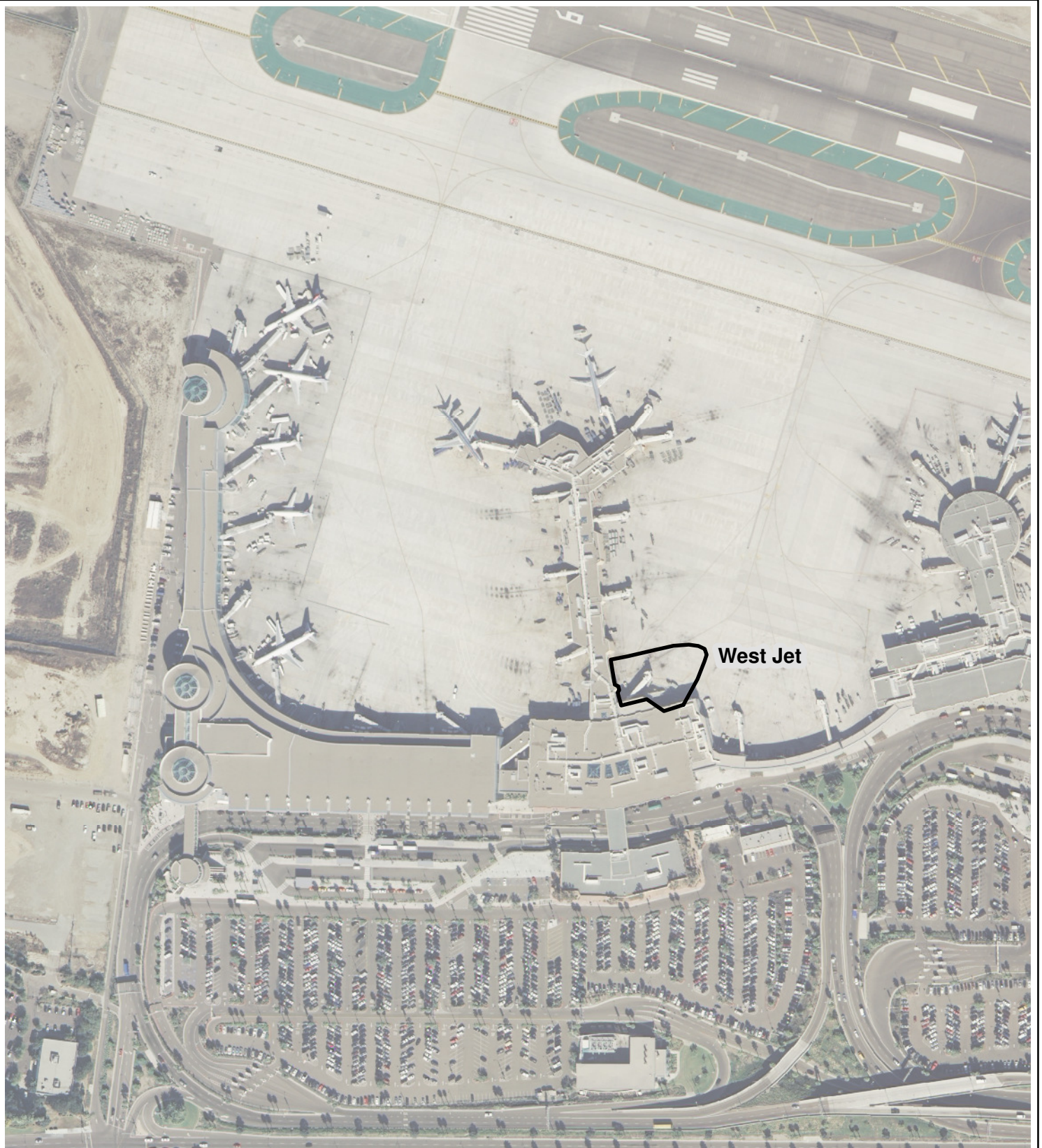
Applicable BMP Categories

Non-Storm Water Management
Outdoor Equipment Ops and Maintenance Areas
Aircraft, Ground Vehicle and Equipment Maintenance
Aircraft, Ground Vehicle and Equipment Fueling
Aircraft, Ground Vehicle and Equipment Cleaning
Employee Training
Housekeeping
Safer/Alternative Products
Spill Prevention, Control, and Clean-up

BMP Number

SC01 - 1, 2, 4
SC02A - 2, 1
SC02B - 10, 11, 2, 3, 7, 1, 13, 2, 4, 5, 6, 8
SC03 - 1, 2, 4, 5, 6, 8
SC04 - 1
SC10 - 2, 3, 1, 4
SC18 - 1, 4, 2, 3, 5
SC19 - 1, 2
SR01 - 2, 6, 1, 3, 5, 8, 9

Structural control measures used at West Jet:



PROJECT NO.: 5013-11-0003	
DATE:	November 2011
DRAWN BY:	RMH
CHECKED BY:	AA



MACTEC

MACTEC Engineering and Consulting, Inc.

**West Jet
Operating Areas**
San Diego International Airport

FIGURE

E-29