

Tenant Summary Sheet

Tenant:

Sun Country

SIC Code: 4512, 4522

Primary Activity: Passenger Carrier

Drainage Area: 12

Nearest MS4 inlet: < 200 feet

Contact: Bassel Sakkab, Supervisor

E: bassel.h.sakkab@delta.com, P: 619-491-2885, F: 619-491-2803

Secondary Contact: Darwin Schussler, Sun Country Station Manager

E: darwain.schussler@suncountry.com, C-619-807-6846

Address: 3835 North Harbor Drive #107
San Diego, CA 92101

Tenant Description and Primary Industrial Activities:

1. Sun Country operates at gate 38.
2. Sun Country does not have on-site contacts, and rely on Delta to handle all operations.
3. All operations are performed the same as Delta flights.
4. Fueling performed by ASIG.
5. Tenant uses Delta's Storm Water Pollution Prevention Plan, Hazardous Materials Business Plan, Hazardous Waste Emergency Plan, Hazardous Waste Management Plan, and FOD Plan.

Significant Materials Potentially Exposed to Storm Water:

Potential Pollutant Sources

Aircraft Fueling
Aircraft Maintenance
Aircraft sanitary services
Fluid leaks from aircraft
Fuel spills

Potential Pollutants

Oil and Grease, Antifreeze, Fuel, Fuel,
Antifreeze, Paints, Battery acid, Lubricants,
Cleaning Solutions

Best Management Practices and Current Structural Controls:

The list below identifies the BMP categories and specific BMPs that are applicable to Sun Country. Appendix B provides a description of each BMP category.

Applicable BMP Categories

Non-Storm Water Management
Outdoor Equipment Ops and Maintenance Areas
Aircraft, Ground Vehicle and Equipment Maintenance
Aircraft, Ground Vehicle and Equipment Fueling
Waste Handling and Disposal
Employee Training
Housekeeping
Safer/Alternative Products
Spill Prevention, Control, and Clean-up

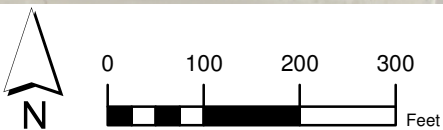
BMP Number

SC01 - 1, 2, 4
SC02A - 2, 1
SC02B - 3, 1, 2, 4, 5
SC03 - 1, 2, 4, 5, 6, 8
SC08 - 1, 2
SC10 - 1, 2, 3, 4
SC18 - 1, 2, 3, 4, 5
SC19 - 1, 2
SR01 - 6, 1, 2, 3, 4, 5, 7, 8, 9

Structural control measures used at Sun Country:



Sun Country



PROJECT NO.:
5013-11-0003
DATE: November 2011
DRAWN BY: RMH
CHECKED BY: AA



MACTEC

MACTEC Engineering and Consulting, Inc.

**Sun Country
Operating Areas**
San Diego International Airport

FIGURE

E-24