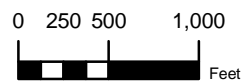


<b>BMP SC14</b>		<b>POTABLE WATER SYSTEM FLUSHING</b>	
<b>PURPOSE:</b>  To prevent the discharge of pollutants to storm water drains associated with flushing and cleaning of aircraft potable water systems.		<b>TARGETED ACTIVITIES:</b>  ➔ Aircraft potable water system cleaning and flushing ➔ Water truck cleaning and flushing	
<b>POLLUTION PREVENTION:</b>		<b>POLLUTANTS of CONCERN:</b>	
<input type="checkbox"/> Implement the following pollution prevention practices and BMPs to prevent discharges from potable water system flushing:  <input type="checkbox"/> Perform flushing activities within designated areas that divert the flushed water away from the storm drain system when ever possible.  <input type="checkbox"/> <b>DO NOT DISCHARGE WASTE WATER OR CLEANING AGENTS TO A CATCH BASIN OR STORM DRAIN.</b> Notify Airport Operations (619-400-2710) and the Airport Authority Environmental Affairs Department (619-400-2784) if any discharges associated with flushing and cleaning of aircraft potable water systems have occurred.	➔ Chlorine Bleach ➔ Purine		
<b>OPERATIONS:</b>		<b>APPLICABLE TENANTS/ DEPARTMENTS:</b>	
<b>Sub-BMPs</b> - 01 <input type="checkbox"/> The aircraft potable water system and water truck flushing/cleaning areas should not be located directly in the path of storm drains.  - 02 <input type="checkbox"/> Perform potable water system flushing only in designated flushing/cleaning areas that capture or divert all wastewater away from storm drains, or to a structural treatment control, sanitary sewer, or dead end sump with pump.  - 03 <input type="checkbox"/> Prevent flushing/cleaning areas from contacting storm water run-on and run-off.	➔ Alaska ➔ American Airlines ➔ American Eagle ➔ Express Jet ➔ Jimsair ➔ Northwest ➔ Sky West ➔ Southwest ➔ US Airways		
<b>STRUCTURAL TREATMENT BMPs:</b> Refer to BMP TC01 for information on structural treatment BMPs.			
<b>AUTHORIZED LOCATIONS FOR POTABLE WATER SYSTEM FLUSHING/CLEANING:</b>			
<input type="checkbox"/> Use only the designated areas for aircraft potable water system flushing/cleaning as shown in the attached map.			
Date:		Version: 1.0	



#### Facilities Legend



2 - Alaska	15 - Express Jet	29 - SkyWest
5 - American Airlines	22 - Jimsair	30 - Southwest
6 - American Eagle	26 - Northwest	34 - US Airways

PROJECT NO.:  
5012-08-0037

DATE:  
March 2009

DRAWN BY:  
RMH

CHECKED BY:



**San Diego  
International Airport**

**BMP SC-14  
Potable Water  
System Flushing**

FIGURE  
**SC-14**