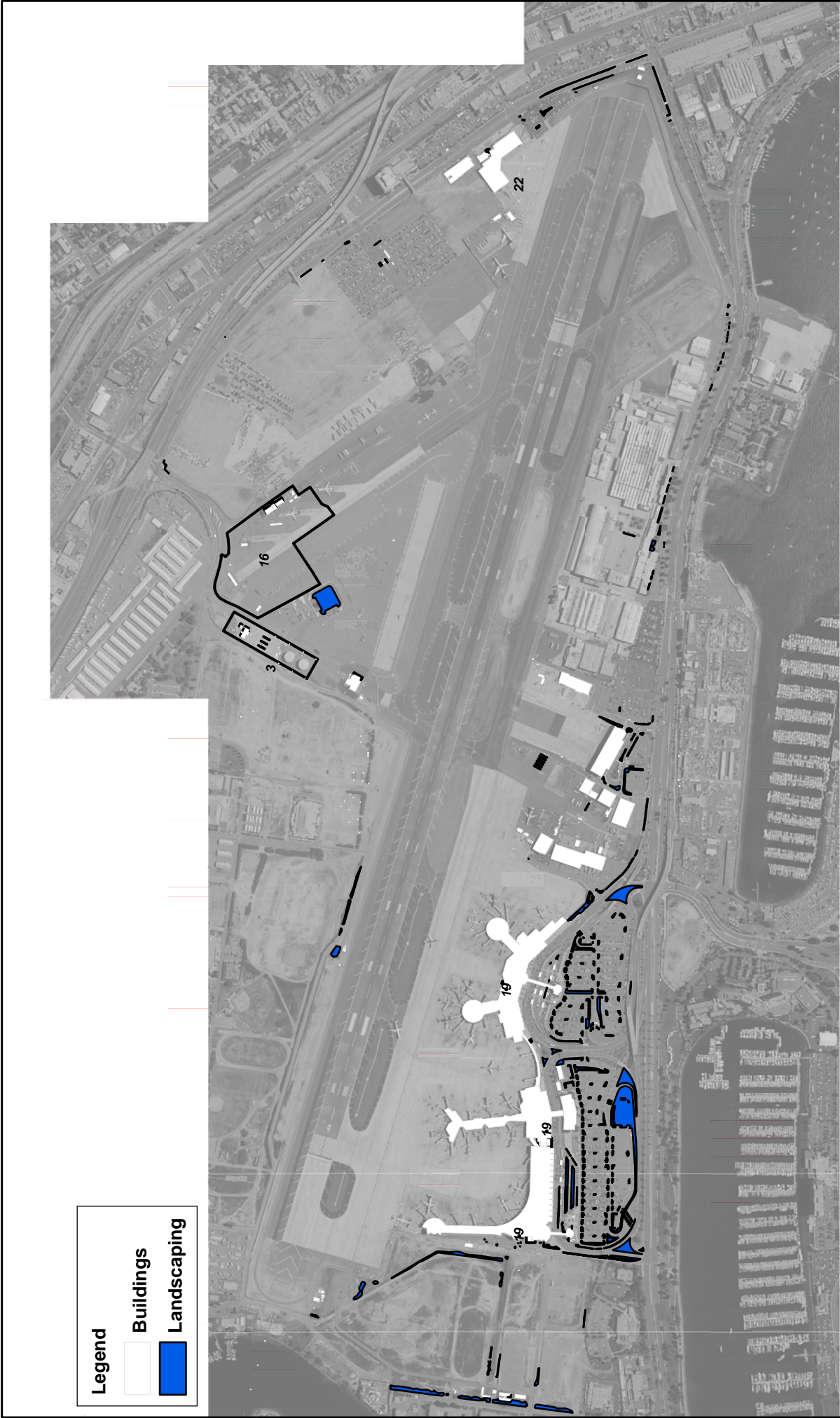


Appendix B – Best Management Practices (BMPs)

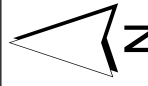
BMP SC09	BUILDING AND GROUNDS MAINTENANCE	
PURPOSE: Prevent or reduce the discharge of pollutants to storm water from building and grounds maintenance by washing and cleaning up with as little water as possible, preventing and cleaning up spills immediately, keeping debris from entering storm drains, and maintaining the storm water collection system.		TARGETED ACTIVITIES: → . Building Maintenance → . Grounds Maintenance
POLLUTION PREVENTION:		POLLUTANTS of CONCERN:
	<p>Implement the following pollution prevention practices and BMPs to prevent discharges of pollutants from building and grounds maintenance to the storm water collection system:</p> <ul style="list-style-type: none"> <input type="checkbox"/> Regularly clean paved surfaces that are exposed to industrial activity. Use “dry” cleaning techniques, such as sweeping, whenever possible. <input type="checkbox"/> Clean any catch basins that receive runoff from maintenance areas on a regular basis. Use a vacuum truck to remove accumulated materials. Do not flush wastes into the storm drain system. <input type="checkbox"/> Minimize use of pesticides, herbicides, and fertilizers and use according to directions. Seek less harmful/toxic products to replace ones currently used. <input type="checkbox"/> Reduce the exposure of galvanized metal structures to rainfall. Possible actions to reduce exposure include; application of a coating of inert paint to the metal surface, replace uncoated galvanized metal fence with vinyl coated galvanized steel or polyester coated galvanized steel. <input type="checkbox"/> Investigate the use of downspout filters on roof downspouts to minimize pollutants in roof runoff. <input type="checkbox"/> Use safer non-toxic products for the outside painting of buildings and grounds maintenance. <input type="checkbox"/> Reduce the exposure of galvanized metal structures to rainfall, by using coated galvanized structures or coating or painting existing structures with non-toxic paints or coatings. 	→ . Pesticides/Herbicides/ Fertilizers → . Oil and Grease → . Sediment → . Landscape Waste → . Metals → . Cleaning Solutions
OPERATIONS:		APPLICABLE TENANTS/ DEPARTMENTS:
Sub-BMPs - 01 <input type="checkbox"/>	Landscape, re-vegetate, or install erosion and sediment controls in areas of exposed soil.	→ . Allied Aviation → . FedEx → . HMS Host → . Jimsair → . SDCRAA
- 02 <input type="checkbox"/>	Irrigate all landscaped areas on a regular basis.	
- 03 <input type="checkbox"/>	Implement integrated pest management methods, minimize the use of pesticides, herbicides, and fertilizers and use according to directions.	
- 04 <input type="checkbox"/>	Use temporary BMPs such as portable booms and vacuum trucks to contain water from outdoor building or structure washdown activities. Collect and properly dispose of all waste water through a	

Appendix B – Best Management Practices (BMPs)

	permitted connection to the sanitary sewer.	
STRUCTURAL TREATMENT BMPs: Refer to BMP TC01 for information on structural treatment BMPs.		
AUTHORIZED BUILDING AND GROUNDS MAINTENANCE LOCATIONS:		
<input type="checkbox"/>	To implement BMPs for the prevention of discharges or pollutants from buildings and grounds maintenance, perform maintenance activities within the designated areas as shown in the attached map.	
Date:		Version: 1.0



PROJECT NO.: 5012-08-0002
 DATE: February 2008
 DRAWN BY: SKR
 CHECKED BY:



San Diego
International Airport

BMP SC-09
Building and Grounds
Maintenance

FIGURE
SC-09