

## Appendix B – Best Management Practices (BMPs)

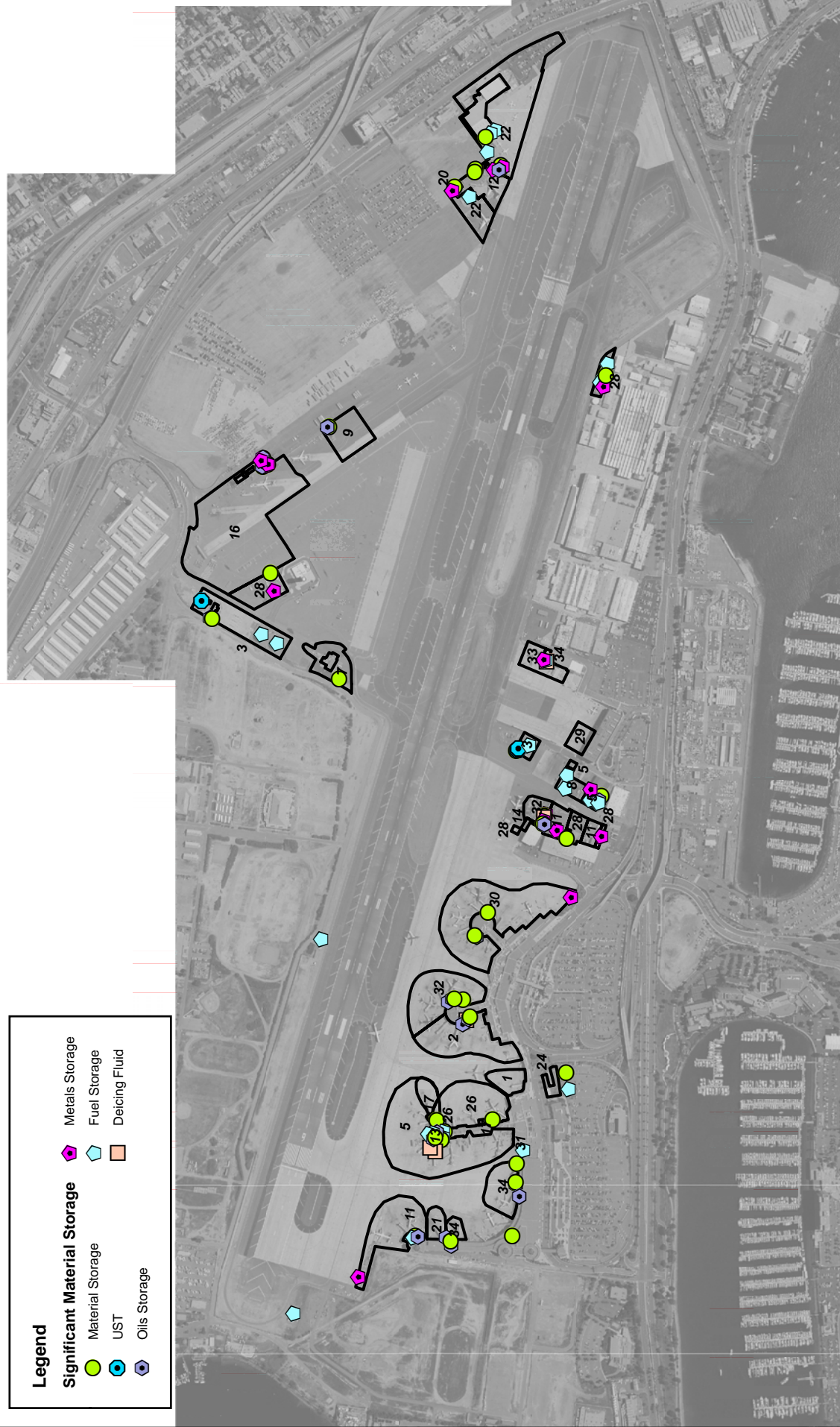
<b>BMP SC07</b>	<b>OUTDOOR MATERIAL STORAGE</b>	
<p><b>PURPOSE:</b> Prevent or reduce the discharge of pollutants to storm water from outdoor storage areas for significant material (e.g., fuels, chemicals, bagged material on pallets, soils or asphalt materials bulk storage, deicing, compounds, etc.)</p>		<p><b>TARGETED ACTIVITIES:</b></p> <ul style="list-style-type: none"> <li>➔ Aircraft/Vehicle/Equipment Maintenance</li> <li>➔ Aircraft/Vehicle Fueling</li> <li>➔ Fuel/Chemical/Equipment Storage</li> <li>➔ Cargo Handling</li> </ul>
<p><b>POLLUTION PREVENTION:</b></p>		<p><b>POLLUTANTS of CONCERN:</b></p> <ul style="list-style-type: none"> <li>➔ Fuel</li> <li>➔ Solvents/Cleaning Solutions</li> <li>➔ Deicing/Anti-Icing Fluids</li> </ul>
<div style="border: 1px solid black; padding: 5px;"> <input type="checkbox"/> Store all significant materials indoors or under cover areas.   <input type="checkbox"/> Develop and implement a Spill Prevention Control and Countermeasure (SPCC) Plan if required.   <input type="checkbox"/> Install overflow protection devices on ASTs to warn the operator or install automatic shut-off transfer pumps.   <input type="checkbox"/> Restrict access to AST, piping, valves.   <input type="checkbox"/> Properly label all storage containers   <input type="checkbox"/> Train personnel in the handling and management of hazardous materials.   <input type="checkbox"/> Store hazardous materials away from high-traffic areas to prevent accidental spills or damage to storage containers.   <input type="checkbox"/> Use tarpaulins, plastic sheeting, roofs, buildings, and other enclosures for temporary or permanent coverings that are effective in preventing storm water contamination.   <input type="checkbox"/> Stack storage containers in accordance with the manufacturers' directions.   <input type="checkbox"/> In hazardous materials storage areas ensure sufficient aisle space to provide access for inspections and to improve the ease of material transport.   <input type="checkbox"/> Place adequate spill kits in appropriate locations.         </div>	<p><b>OPERATIONS:</b></p>	
<p><b>APPLICABLE TENANTS/</b></p>		

## Appendix B – Best Management Practices (BMPs)

<div>Sub-BMPs</div> <div><div><div>- 01</div><div><input type="checkbox"/></div><div>Outdoor material storage areas are not located directly in the path of storm drains.</div></div><div><div>- 02</div><div><input type="checkbox"/></div><div>Outdoor material storage areas have areas with overhead cover and secondary containment.</div></div><div><div>- 03</div><div><input type="checkbox"/></div><div>Outdoor material storage areas are prevented from contacting stormwater run-on and run-off (e.g., by the use of berms, wood pallets etc).</div></div><div><div>- 04</div><div><input type="checkbox"/></div><div>Cover and contain material stockpiles or implement erosion control practices at the perimeter of the site and at any inlets or catch basins to prevent the off-site transport of eroded material.</div></div><div><div>- 05</div><div><input type="checkbox"/></div><div>Cover wood products treated with preservative chemicals with tarps or store them indoors.</div></div><div><div>- 06</div><div><input type="checkbox"/></div><div>Install protection guards (bollards, posts, or guardrails) around ASTs and piping to prevent damage from vehicles or forklifts and any subsequent release.</div></div><div><div>- 07</div><div><input type="checkbox"/></div><div>Regular inspections are performed on tanks, storage containers, and berms to check for corrosion, structural failure, loose fittings, poor welds, leaks etc. Repairs or replacements are performed as needed.</div></div><div><div>- 08</div><div><input type="checkbox"/></div><div>Liquid materials in ASTs should be stored in double-walled, valved storage tanks or within concrete bermed secondary containment areas to provide the capacity to contain the entire volume of the single largest container, with sufficient freeboard to contain precipitation. The area inside the curb should slope to a drain.</div></div><div><div>- 09</div><div><input type="checkbox"/></div><div>Precipitation from bermed areas should be drained to the sanitary sewer if available, or inspected and tested according to applicable regulations prior to its release to a storm drain. The drain must have a positive control, such as a lock, valve, or plug, below the product level in the tank to prevent release of contaminated liquids.</div></div><div><div>- 10</div><div><input type="checkbox"/></div><div>Properly dispose of ponded storm water removed from bermed or containment areas.</div></div><div><div>- 11</div><div><input type="checkbox"/></div><div>The facility/operation has and displays a County hazardous materials permit for hazardous materials storage.</div></div><div><div>- 12</div><div><input type="checkbox"/></div><div>Maintain an accurate, up-to-date inventory of the materials delivered and stored on site.</div></div></div>	<div>DEPARTMENTS:</div> <div><div><div>→</div><div>Aero Mexico</div></div><div><div>→</div><div>Alaska Airlines</div></div><div><div>→</div><div>Allied Aviation</div></div><div><div>→</div><div>American Airlines</div></div><div><div>→</div><div>ARFF</div></div><div><div>→</div><div>ASIG</div></div><div><div>→</div><div>BAX Global</div></div><div><div>→</div><div>Delta</div></div><div><div>→</div><div>DHL Express</div></div><div><div>→</div><div>Elite Line Service</div></div><div><div>→</div><div>Exec Air</div></div><div><div>→</div><div>FedEx</div></div><div><div>→</div><div>Frontier</div></div><div><div>→</div><div>Jet Blue</div></div><div><div>→</div><div>Jet Wash Inc.</div></div><div><div>→</div><div>Jimsair</div></div><div><div>→</div><div>LPi</div></div><div><div>→</div><div>Northwest</div></div><div><div>→</div><div>SDCRAA</div></div><div><div>→</div><div>Sky West</div></div><div><div>→</div><div>Southwest</div></div><div><div>→</div><div>SPC</div></div><div><div>→</div><div>United</div></div><div><div>→</div><div>UPS</div></div><div><div>→</div><div>US Airways</div></div></div>
<div>STRUCTURAL TREATMENT BMPs: Refer to BMP TC01 for information on structural treatment BMPs.</div> <div>AUTHORIZED LOCATIONS FOR THE OUTDOOR STORAGE OF SIGNIFICANT MATERIALS:</div>	

## Appendix B – Best Management Practices (BMPs)

<input type="checkbox"/>	To implement BMPs for the prevention of discharges of pollutants from outdoor storage areas, store significant materials at the designated storage areas as shown in the attached map.	
Date:		Version: 1.0



**Facilities Legend**

Airline	Number of Facilities
1 - AeroMexico	1,500
2 - Alaska	1,000
3 - Allied Aviation	500
5 - American Airlines	400
7 - ARFF	300
8 - ASIG	250
9 - BAX Global	200
11 - Delta	150
12 - DHL	100
13 - Elite Line Services	100
14 - ExecAir	100
16 - FedEx	100
17 - Frontier	100
20 - Jet Wash, Inc.	100
21 - JetBlue	100
22 - Jimsair	100
24 - Lpi	100
26 - Northwest	100
28 - SDCRAA	100
29 - SkyWest	100
30 - Southwest	100
31 - SPC	100
32 - United	100
33 - UPS	100
34 - US Airways	100