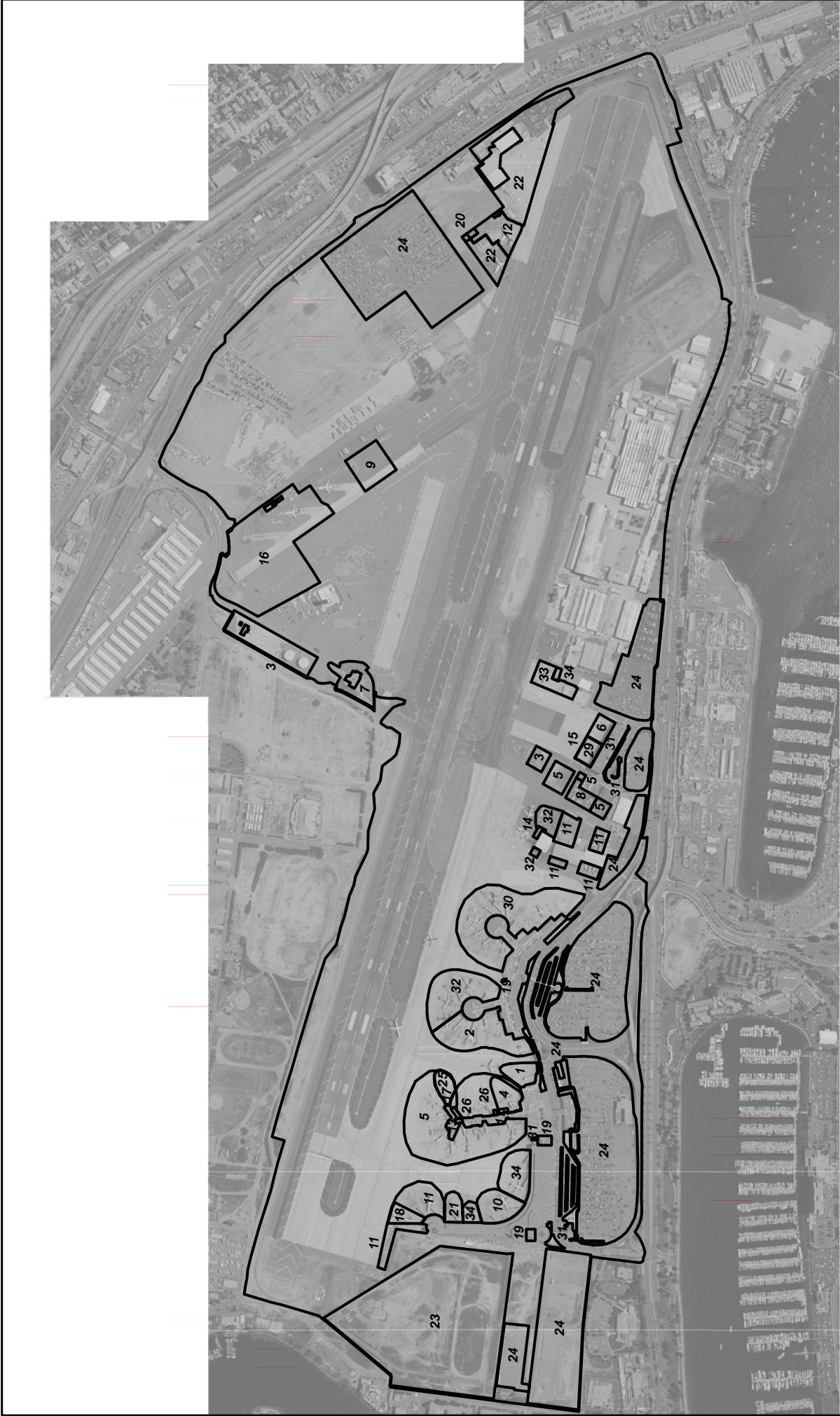


Appendix B – Best Management Practices (BMPs)

BMP SC02A	OUTDOOR EQUIPMENT OPERATIONS AND MAINTENANCE AREAS	
PURPOSE: To prevent the discharge of pollutants to storm water from outdoor equipment operations and general maintenance facilities.		TARGETED ACTIVITIES: ➔ All Outdoor Equipment Operations ➔ All Maintenance
POLLUTION PREVENTION: <div style="display: flex; align-items: flex-start;"> <div style="flex: 1;"> <input type="checkbox"/> Provide covered maintenance areas when designing new facilities or upgrading existing facilities. If possible utilize indoor areas, lean-tos, or portable covers. <input type="checkbox"/> Perform the activity during dry periods. <input type="checkbox"/> Use non-toxic, biodegradable chemicals or products for maintenance, minimize or eliminate the use of solvents and substitute materials with less hazardous properties where feasible. <input type="checkbox"/> Use absorbent materials at potential problem areas. Adequately collect/remove absorbent materials from area after use and dispose of them in an appropriate manner. <input type="checkbox"/> DO NOT HOSE DOWN WORK AREAS TO THE STORM DRAIN SYSTEM. Notify Airport Operations (619-400-2710) and the Airport Authority Environmental Affairs Department (619-400-2784) if any evidence of the disposal of solvents or cleaning solutions to the storm drain has occurred. </div> <div style="flex: 1; padding-left: 10px;"> POLLUTANTS of CONCERN: ➔ Bacteria ➔ Battery Acid ➔ Fuel ➔ Metals ➔ Nutrients ➔ Oil and Grease ➔ Organics ➔ Paint ➔ Sediments ➔ Solvents/Cleaning Solutions ➔ Trash ➔ Vehicle Fluids </div> </div>		
OPERATIONS:		APPLICABLE TENANTS/ DEPARTMENTS:
Sub-BMPs - 01 <input type="checkbox"/> - 02 <input type="checkbox"/>	Equipment operations and maintenance areas should not be located directly in the path of storm drains. Perform equipment operations and maintenance in designated areas with overhead cover for pollutant sources and/or activity areas. SEE ALSO BMP SC02B	➔ Aero Mexico ➔ Alaska Airlines ➔ Allied Aviation ➔ Aloha ➔ American Airlines ➔ American Eagle ➔ ARFF ➔ ASIG ➔ BAX Global ➔ Delta ➔ DHL Express ➔ Elite Line Service ➔ Exec Air ➔ Express Jet ➔ FedEx ➔ Frontier ➔ Hawaiian ➔ Jet Wash ➔ Jimsair

Appendix B – Best Management Practices (BMPs)

		<ul style="list-style-type: none"> ➔ LPi ➔ Midwest ➔ Northwest ➔ SDCRAA ➔ Sky West ➔ Southwest ➔ SPC ➔ United ➔ UPS ➔ US Airways
STRUCTURAL TREATMENT BMPs: Refer to BMP TC01 for information on structural treatment BMPs.		
AUTHORIZED OUTDOOR OPERATIONS AND MAINTENANCE LOCATIONS:		
<input type="checkbox"/>	Use only the designated areas for outdoor operations and maintenance activities as shown in the attached map.	
Date:		Version: 1.0



Facilities Legend

- | | | | | | | | |
|---------------------|-----------------------|------------------|--------------------------|---------------------|---------------|----------------|-----------------|
| 1 - AeroMexico | 5 - American Airlines | 9 - BAX Global | 13 - Elite Line Services | 17 - Frontier | 21 - JetBlue | 25 - Midwest | 31 - SPC |
| 2 - Alaska | 6 - American Eagle | 10 - Continental | 14 - ExecAir | 18 - Hawaiian | 22 - Jimsair | 26 - Northwest | 32 - United |
| 3 - Allied Aviation | 7 - ARFF | 11 - Delta | 15 - Express Jet | 19 - HMS Host | 23 - Landfill | 29 - SkyWest | 33 - UPS |
| 4 - Aloha | 8 - ASIG | 12 - DHL | 16 - FedEx | 20 - Jet Wash, Inc. | 24 - Lpi | 30 - Southwest | 34 - US Airways |



PROJECT NO.:	5012-08-0002
DATE:	February 2008
DRAWN BY:	SKR
CHECKED BY:	



San Diego
International Airport

BMP SC-02A
Outdoor Equipment Operations
and Maintenance Areas

FIGURE
SC-02A