

## **FIGURES**

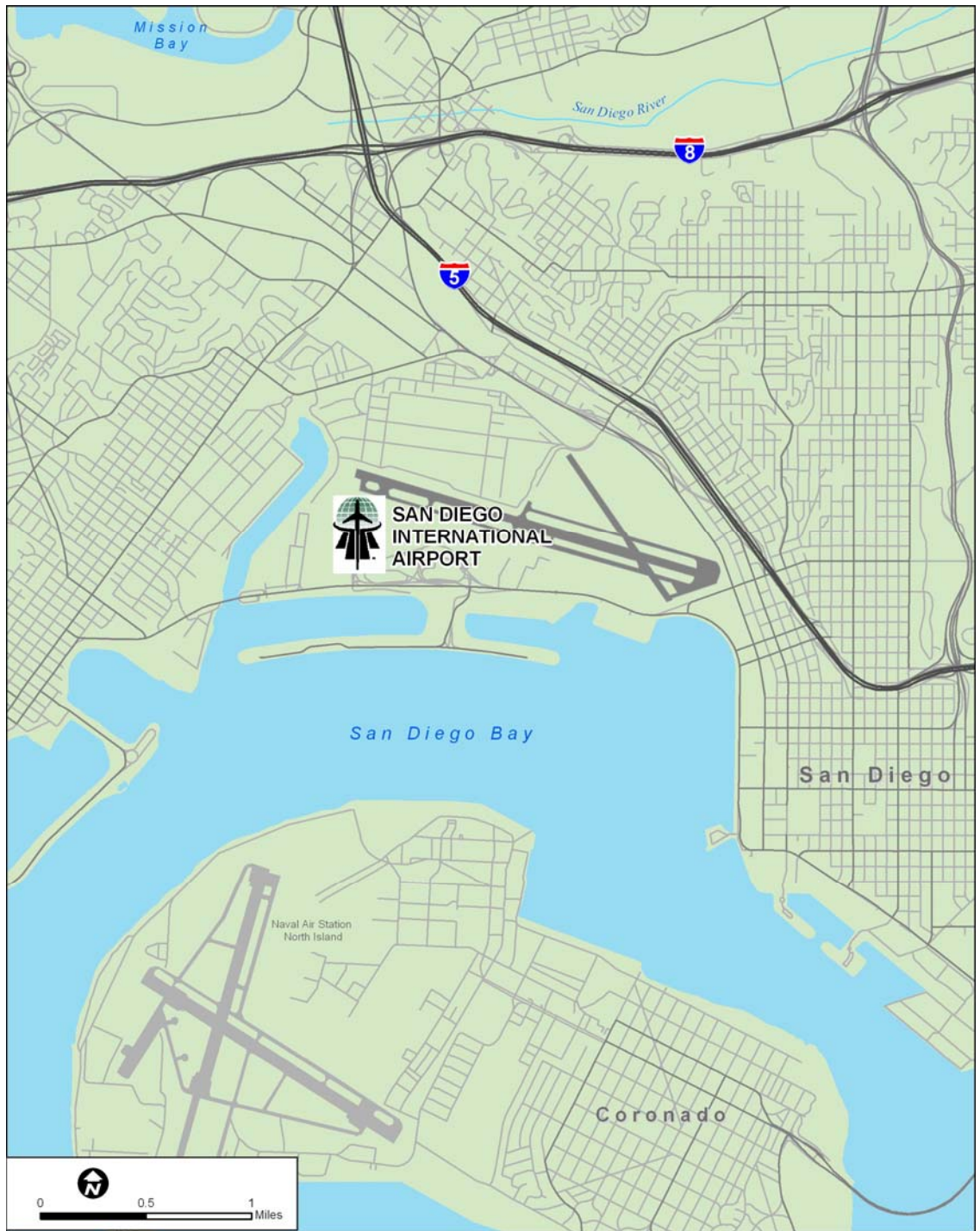
## Figures





## Figures





## Figures





Legend

Storm Drain Line

Drainage Basin

Drainage Basin Number

Sample Location Sub-Drainage

Sample Location

Vortech Unit

Drain Inlet Insert

Oil/Water Separator

Least Tern ovals

Reportable Spill

Material Storage

UST

Oils Storage

Metals Storage

Industrial Waste

Grease Trap

Grease Receptacle

Grease Container

Fueling

Fuel Storage

Dumpsters

Deicing Fluid

AeroMexico

Alaska

Allied Aviation

Aloha

American Airlines

American Eagle

ARFF

ASIG

BAX Global

Continental

Delta

DHL

Elite Line Services

ExecAir

Express Jet

FedEx

Frontier

Hawaiian

HMS Host

Jet Wash, Inc.

Jet Blue

Jimsair

Lpi

Midwest

Northwest

Rental Car Storage Area

SDCRAA

SkyWest

Southwest

SPC

United

UPS

US Airways

Notes:

1. Areas impacted by storm water run-on from surrounding areas include the eastern portion of Drainage Basin 1 and the northern portions of Drainage Basins 5, 6, and 13.

2. Most storage areas are under cover, apart from the boneyard area (see Appendix E, figure E-26) and some equipment storage areas northwest of Terminal 2 and outside some maintenance shops.

3. All areas are paved apart from the landfill area, the Least Tern ovals, and the landscaped areas in the parking lots (see Appendix B figure SC-09).

PROJECT NO.: 5012-08-0002  
DATE: February 2008  
DRAWN BY: SKR  
CHECKED BY:

SAN DIEGO  
INTERNATIONAL AIRPORT  
San Diego, California

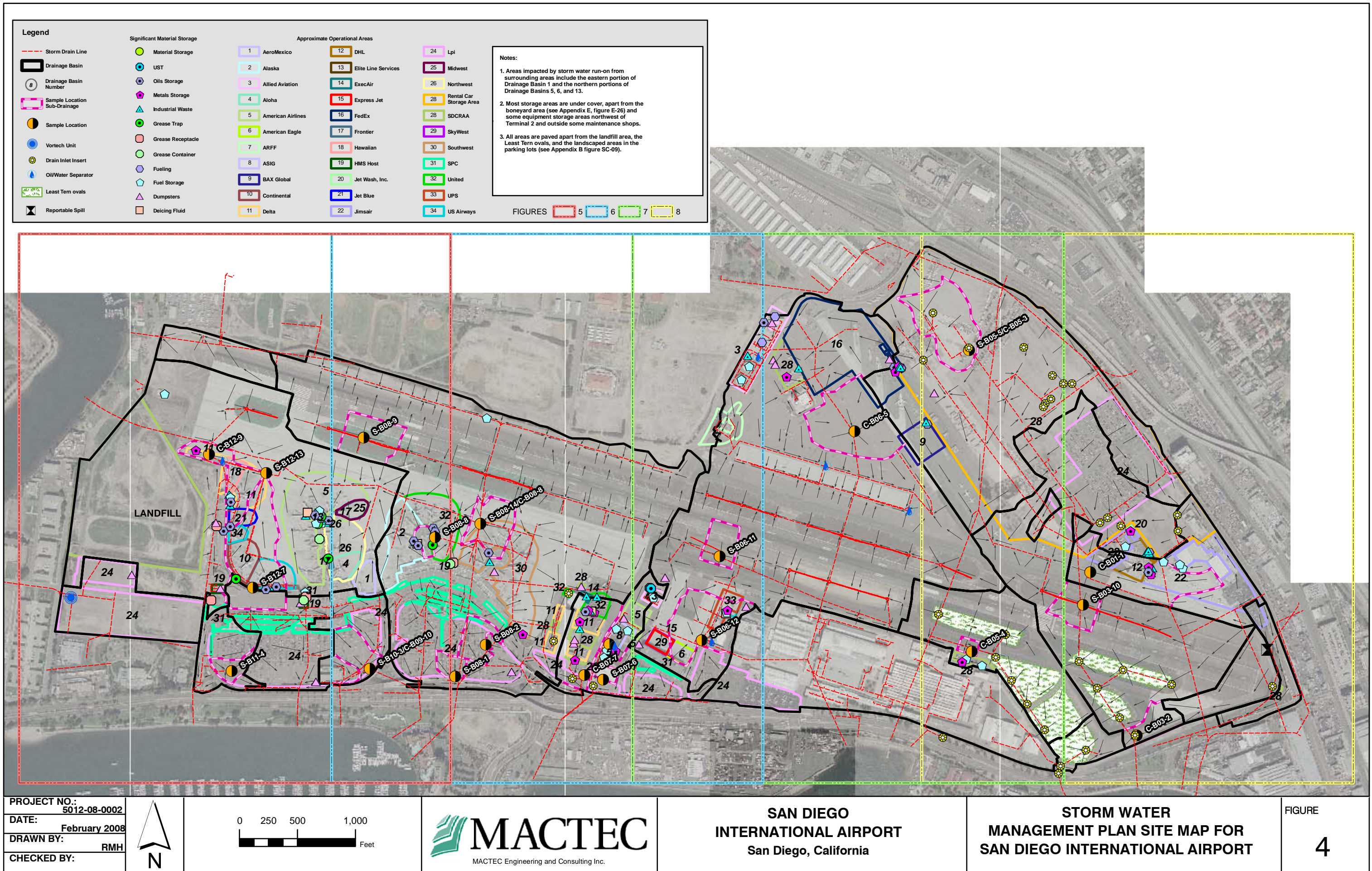
STORM WATER  
MANAGEMENT PLAN SITE MAP FOR  
SAN DIEGO  
INTERNATIONAL AIRPORT

FIGURE  
3















Legend

Storm Drain Line

Drainage Basin

8

Drainage Basin Number

Sample Location

Sub-Drainage

Sample Location

Vortech Unit

Drain Inlet Insert

Oil/Water Separator

Least Tern ovals

Reportable Spill

Material Storage

UST

Oil Storage

Metals Storage

Industrial Waste

Grease Trap

Grease Receptacle

Grease Container

Fueling

Fuel Storage

Dumpsters

Deicing Fluid

1

Aeromexico

2

Alaska

3

Allied Aviation

4

Aloha

5

American Airlines

6

American Eagle

7

ARFF

8

ASIG

9

BAX Global

10

Continental

11

Delta

12

DHL

13

Elite Line Services

14

ExecAir

15

Express Jet

16

FedEx

17

Frontier

18

Hawaiian

19

HMS Host

20

Jet Wash, Inc.

21

Jet Blue

22

Jimsair

24

Lpi

25

Midwest

26

Northwest

28

Rental Car Storage Area

28

SDCRAA

29

SkyWest

30

Southwest

31

SPC

32

United

33

UPS

34

US Airways

Notes:

1. Areas impacted by storm water run-on from surrounding areas include the eastern portion of Drainage Basin 1 and the northern portions of Drainage Basins 5, 6, and 13.

2. Most storage areas are under cover, apart from the honeyard area (see Appendix E, figure E-26) and some equipment storage areas northwest of Terminal 2 and outside some maintenance shops.

3. All areas are paved apart from the landfill area, the Least Tern ovals, and the landscaped areas in the parking lots (see Appendix B figure SC-09).

PROJECT NO.: S012-08-0002  
DATE: February 2008  
DRAWN BY: RHH  
CHECKED BY:

N

0 100 200 300 400 Feet

MACTEC  
MACTEC Engineering and Consulting, Inc.

SAN DIEGO  
INTERNATIONAL AIRPORT  
San Diego, California

STORM WATER  
MANAGEMENT PLAN SITE MAP FOR  
SAN DIEGO INTERNATIONAL AIRPORT  
TERMINAL 2 AND LANDFILL

FIGURE  
5







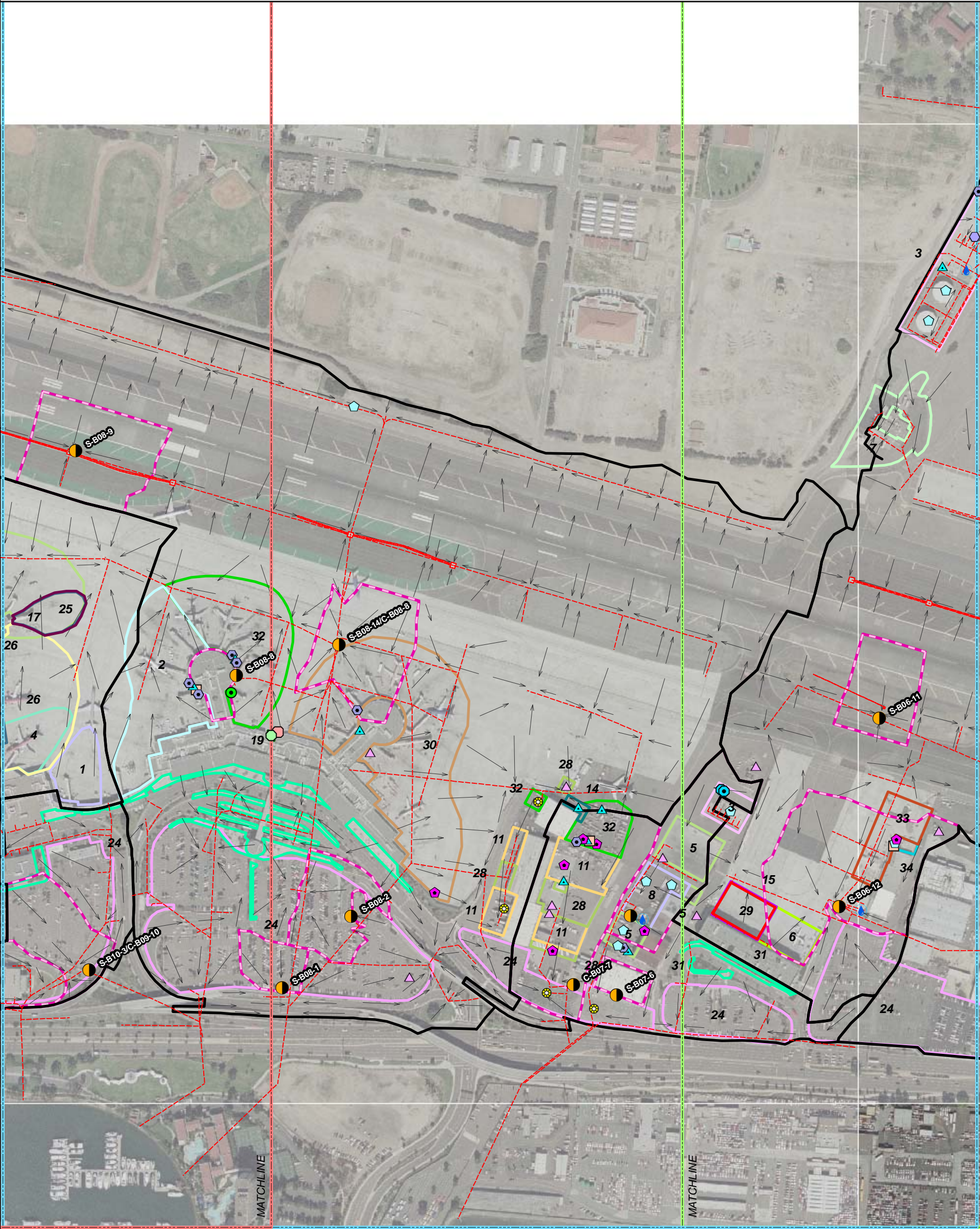
Legend

- Storm Drain Line
- Drainage Basin
- Drainage Basin Number
- Sample Location Sub-Drainage
- Sample Location
- Vortech Unit
- Drain Inlet Insert
- Oil/Water Separator
- Least Tern ovals
- Reportable Spill

- Significant Material Storage
- Material Storage
  - UST
  - Oils Storage
  - Metals Storage
  - Industrial Waste
  - Grease Trap
  - Grease Receptacle
  - Grease Container
  - Fueling
  - Fuel Storage
  - Dumpsters
  - Deicing Fluid

- Approximate Operational Areas
- |                     |                        |                            |
|---------------------|------------------------|----------------------------|
| 1 AeroMexico        | 12 DHL                 | 24 Lpi                     |
| 2 Alaska            | 13 Elite Line Services | 25 Midwest                 |
| 3 Allied Aviation   | 14 ExecAir             | 26 Northwest               |
| 4 Aloha             | 15 Express Jet         | 28 Rental Car Storage Area |
| 5 American Airlines | 16 FedEx               | 28 SDCRAA                  |
| 6 American Eagle    | 17 Frontier            | 29 SkyWest                 |
| 7 ARFF              | 18 Hawaiian            | 30 Southwest               |
| 8 ASIG              | 19 HMS Host            | 31 SPC                     |
| 9 BAX Global        | 20 Jet Wash, Inc.      | 32 United                  |
| 10 Continental      | 21 Jet Blue            | 33 UPS                     |
| 11 Delta            | 22 Jimsair             | 34 US Airways              |

- Notes:
- Areas impacted by storm water run-on from surrounding areas include the eastern portion of Drainage Basin 1 and the northern portions of Drainage Basins 5, 6, and 13.
  - Most storage areas are under cover, apart from the boneyard area (see Appendix E, figure E-26) and some equipment storage areas northwest of Terminal 2 and outside some maintenance shops.
  - All areas are paved apart from the landfill area, the Least Tern ovals, and the landscaped areas in the parking lots (see Appendix B figure SC-09).



PROJECT NO.: 5012-08-0002  
DATE: February 2008  
DRAWN BY: RMH  
CHECKED BY:



0 100 200 300 400 Feet



SAN DIEGO  
INTERNATIONAL AIRPORT  
San Diego, California

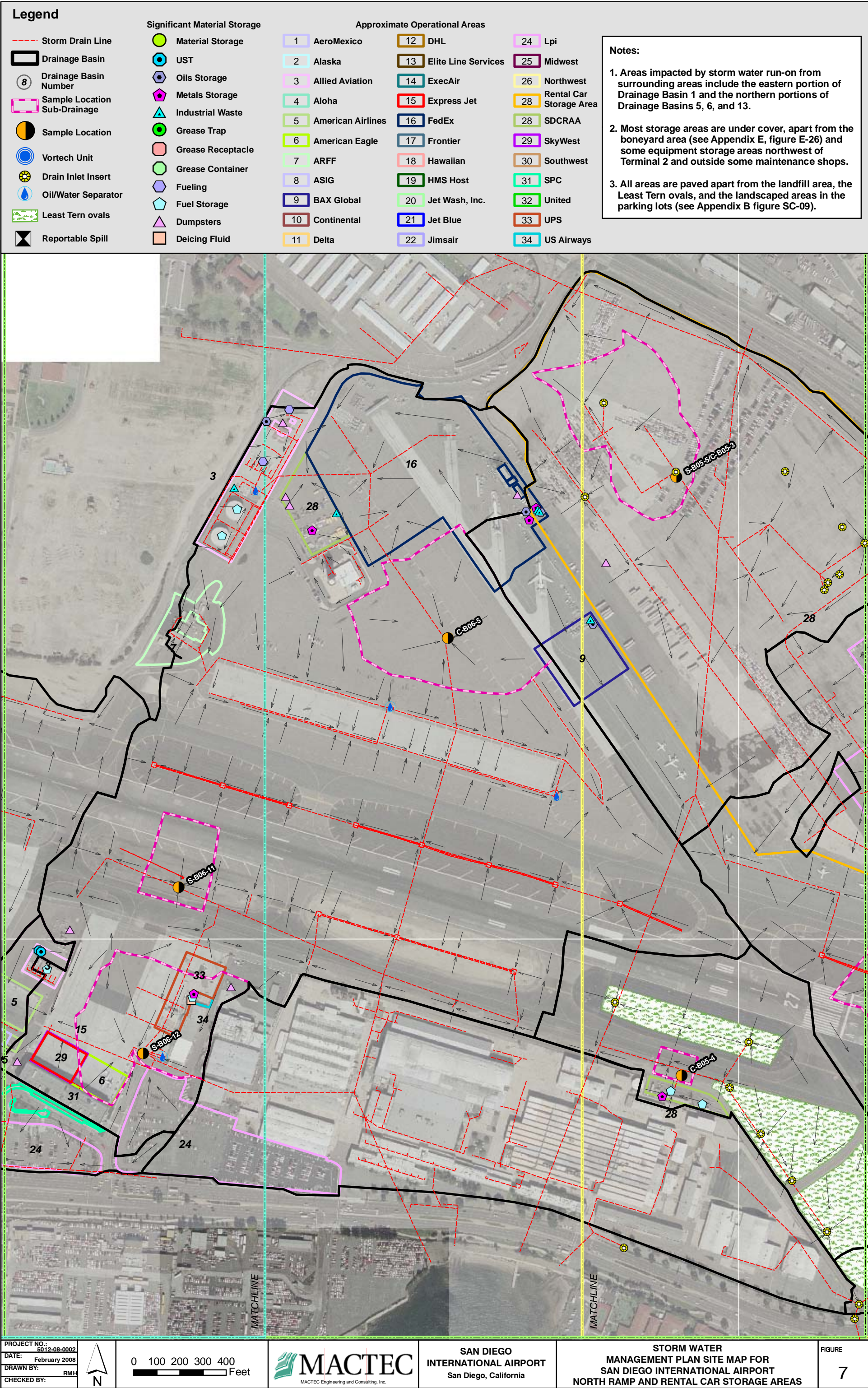
STORM WATER  
MANAGEMENT PLAN SITE MAP FOR  
SAN DIEGO INTERNATIONAL AIRPORT  
TERMINAL 1, CARGO AREA AND COMMUTER TERMINAL

FIGURE  
6















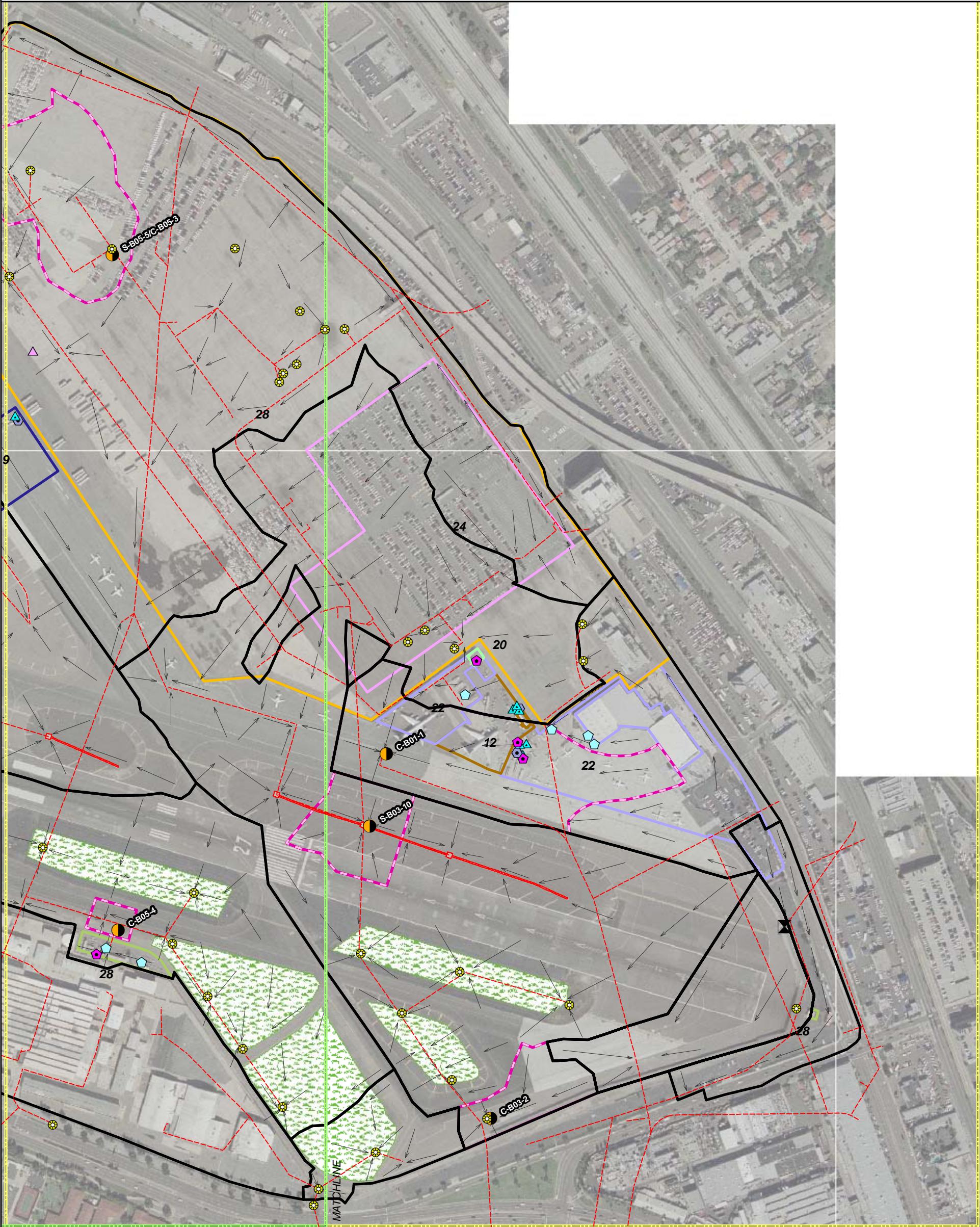
Legend

- Storm Drain Line
- Drainage Basin
- Drainage Basin Number
- Sample Location Sub-Drainage
- Sample Location
- Vortech Unit
- Drain Inlet Insert
- Oil/Water Separator
- Least Tern ovals
- Reportable Spill

- Significant Material Storage
- Material Storage
  - UST
  - Oils Storage
  - Metals Storage
  - Industrial Waste
  - Grease Trap
  - Grease Receptacle
  - Grease Container
  - Fueling
  - Fuel Storage
  - Dumpsters
  - Deicing Fluid

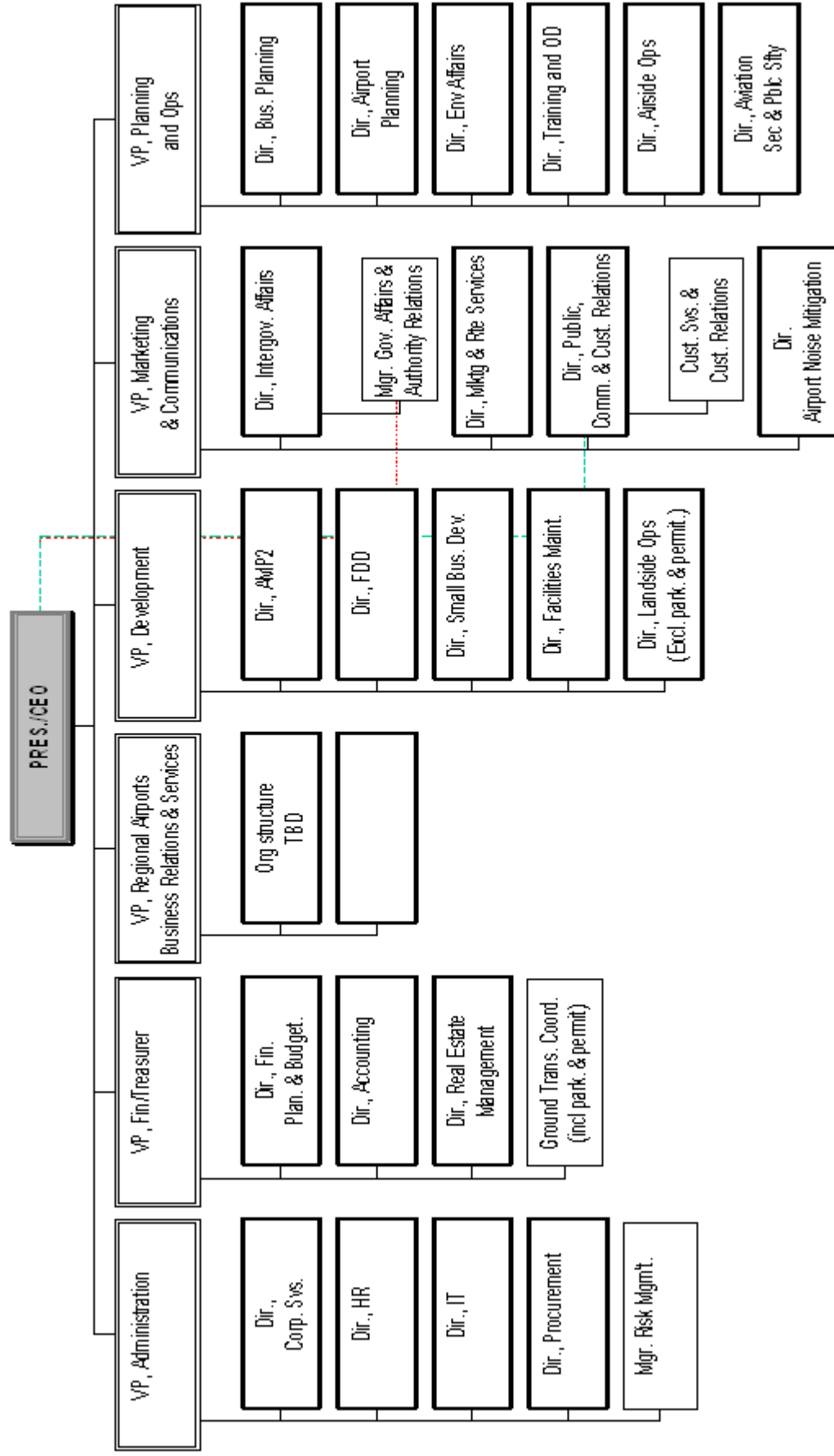
- Approximate Operational Areas
- |                     |                        |                            |
|---------------------|------------------------|----------------------------|
| 1 AeroMexico        | 12 DHL                 | 24 Lpi                     |
| 2 Alaska            | 13 Elite Line Services | 25 Midwest                 |
| 3 Allied Aviation   | 14 ExecAir             | 26 Northwest               |
| 4 Aloha             | 15 Express Jet         | 28 Rental Car Storage Area |
| 5 American Airlines | 16 FedEx               | 28 SDCRAA                  |
| 6 American Eagle    | 17 Frontier            | 29 SkyWest                 |
| 7 ARFF              | 18 Hawaiian            | 30 Southwest               |
| 8 ASIG              | 19 HMS Host            | 31 SPC                     |
| 9 BAX Global        | 20 Jet Wash, Inc.      | 32 United                  |
| 10 Continental      | 21 Jet Blue            | 33 UPS                     |
| 11 Delta            | 22 Jimsair             | 34 US Airways              |

- Notes:
- Areas impacted by storm water run-on from surrounding areas include the eastern portion of Drainage Basin 1 and the northern portions of Drainage Basins 5, 6, and 13.
  - Most storage areas are under cover, apart from the boneyard area (see Appendix E, figure E-26) and some equipment storage areas northwest of Terminal 2 and outside some maintenance shops.
  - All areas are paved apart from the landfill area, the Least Tern ovals, and the landscaped areas in the parking lots (see Appendix B figure SC-09).









## Figures



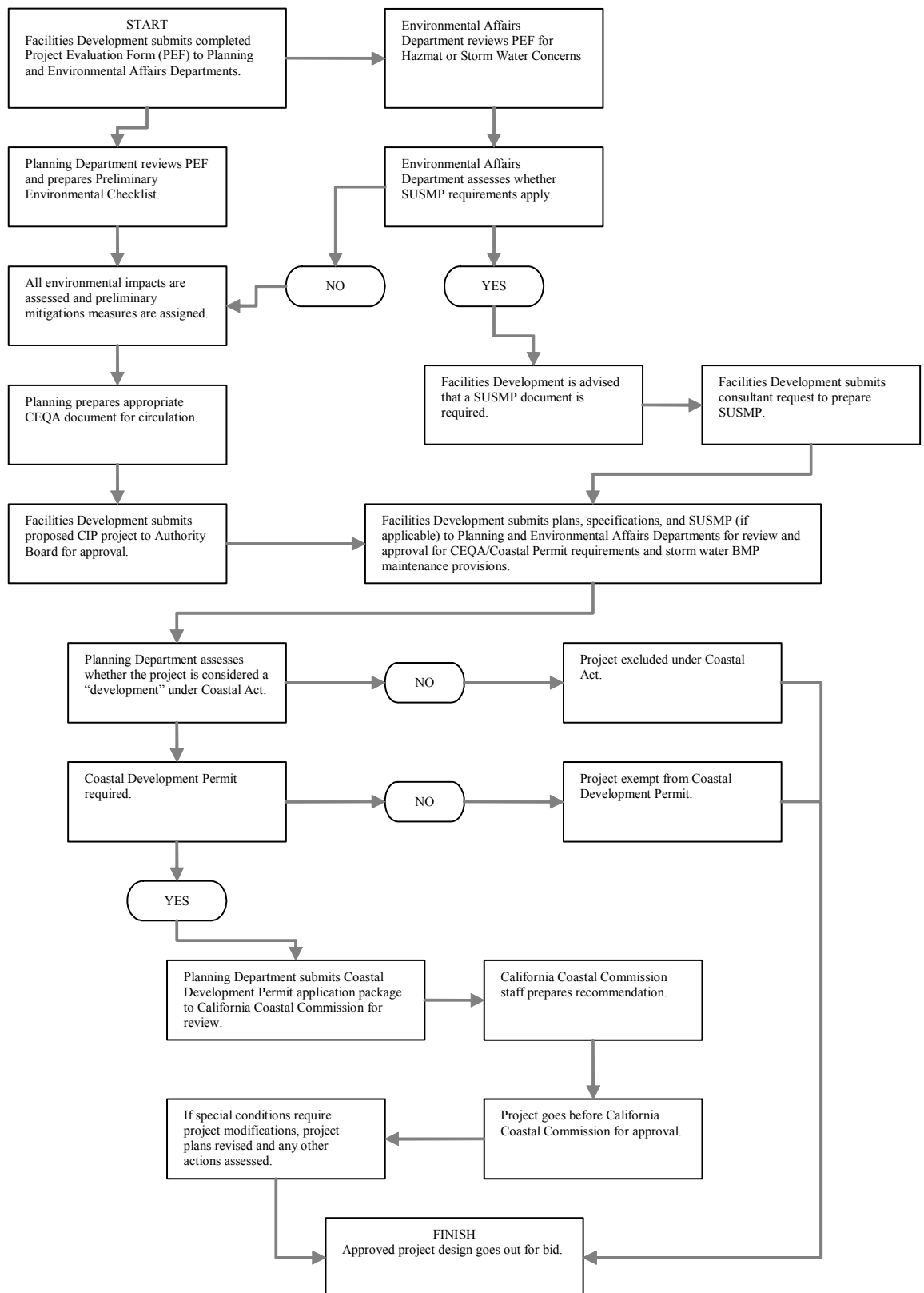




## Figures







## Figures

