

Frontier Airlines

SIC Codes	4512, 4522	Contact Information	
Primary Activity	Passenger Carrier	Fred Jones	Manager
Drainage Areas	8	P 619	C 6195428318
Nearest MS4 Inlet	200 - 1000 ft.	fjones@worldwideflight.com	
Address	3707 North Harbor Dr. #105	Ken Pierce	Manager - Regional
	San Diego, CA 92101	P 4246258230	
		kpierce@flyfrontier.com	

Facility Description and Activities

1. GAT performs GSE maintenance at the gate or GAT shop.
2. GAT no longer performs cargo operations.
3. Pacific Aircraft Maintenance conduct minor aircraft maintenance while parked on ramp.
4. One flammables cabinet is located in the bag room. All other outdoor materials are not stored on the airport premises.
5. GSE equipment is a combination of gas and propane.
6. Drip pans are used on an as-needed basis.
7. Sweeping is done on an as-needed basis.
8. Statewide Stripes performs all ramp painting.
9. All oils and fluids used for maintenance are stored at GAT or PAM shops.
10. WFS is a vendor for Frontier for above and below wing services in SAN. As part of this agreement, all ground equipment is now WFS-owned and operated. Ken Pierce is the Frontier manager assigned to SAN, however, operationally, the WFS manager is Fred Jones.

Significant Materials/Activities Potentially Exposed to Storm Water

Potential Pollutant Sources

Aircraft sanitary services
Cargo handling
Equipment storage
Fluid leaks
Fuel spills, Fuel transfer
Material loading/unloading
Outdoor waste storage
Potable water flushing

Potential Pollutants

Anti Freeze
Battery Acid
Cleaning Solutions
Degreasers (Citrus based)
Fuel
Fuel (Jet) Hydraulic
Fluids Lavatory
Chemicals

Trash collection

Tenant Summaries

Lavatory Wastes

Lubricants

Oil & Grease

Paints

Recyclables

Solvents

Trash

Best Management Practices Applicable to Facility

Activities

Non-Storm Water Management

Outdoor Equipment Ops Maintenance Areas

Aircraft, Ground Vehicle & Equipment
Maintenance

Aircraft, Ground Vehicle & Equipment Fueling

Outdoor Loading/Unloading of Materials

Waste Handling & Disposal

Employee Training Lavatory

Service Operation Potable

Water System Flushing

Housekeeping

Safer/Alternative Products

Spill Prevention, Control & Clean Up

BMPs

SC01 - 1, 2, 4

SC02A - 1, 2

SC02B - 1, 2, 3, 4, 5, 6, 7, 8, 9, 10, 11, 13

SC03 - 1, 2, 4, 5, 6, 8

SC06 - 1, 2, 3, 4, 6, 7

SC08 - 1, 2, 3, 4, 5, 6, 8, 9, 10, 11, 12

SC10 - 1, 2, 3, 4

SC11 - 3, 4, 5, 6, 7, 8, 9, 10

SC14 - 1, 2, 3

SC18 - 1, 2, 3, 4, 5, 6, 7, 8, 9

SC19 - 1, 2

SR01 - 1, 2, 3, 4, 5, 6, 7, 8, 9

* Appendix B provides descriptions for each BMP category.

Structural Control measures used by facility:

Materials Storage Area

Storage in lockers at Gate 12

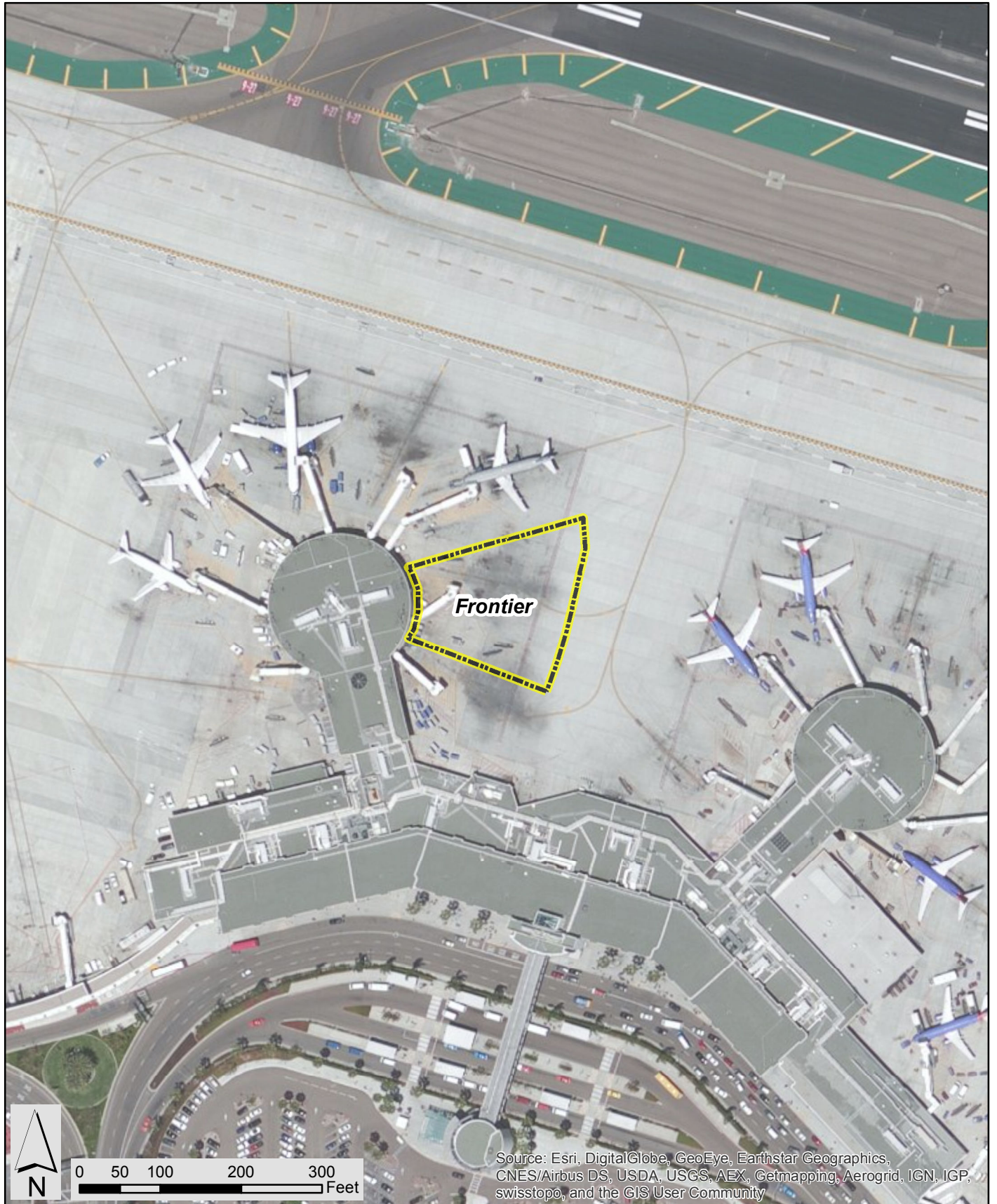
Materials Storage Amounts

25-30 55 gallon propane tanks filled offsite, stored in cages by ramp at Gate 12

No other materials recorded over 55 gallons

Shipping/Receiving Area

Not recorded



PROJECT NO.:
5025-13-0031
DATE: JUNE 2015
DRAWN BY: RMH
CHECKED BY: AJA

amec foster wheeler



Frontier
Operating Areas
San Diego International Airport

FIGURE

E-16

Intentionally Left Blank