
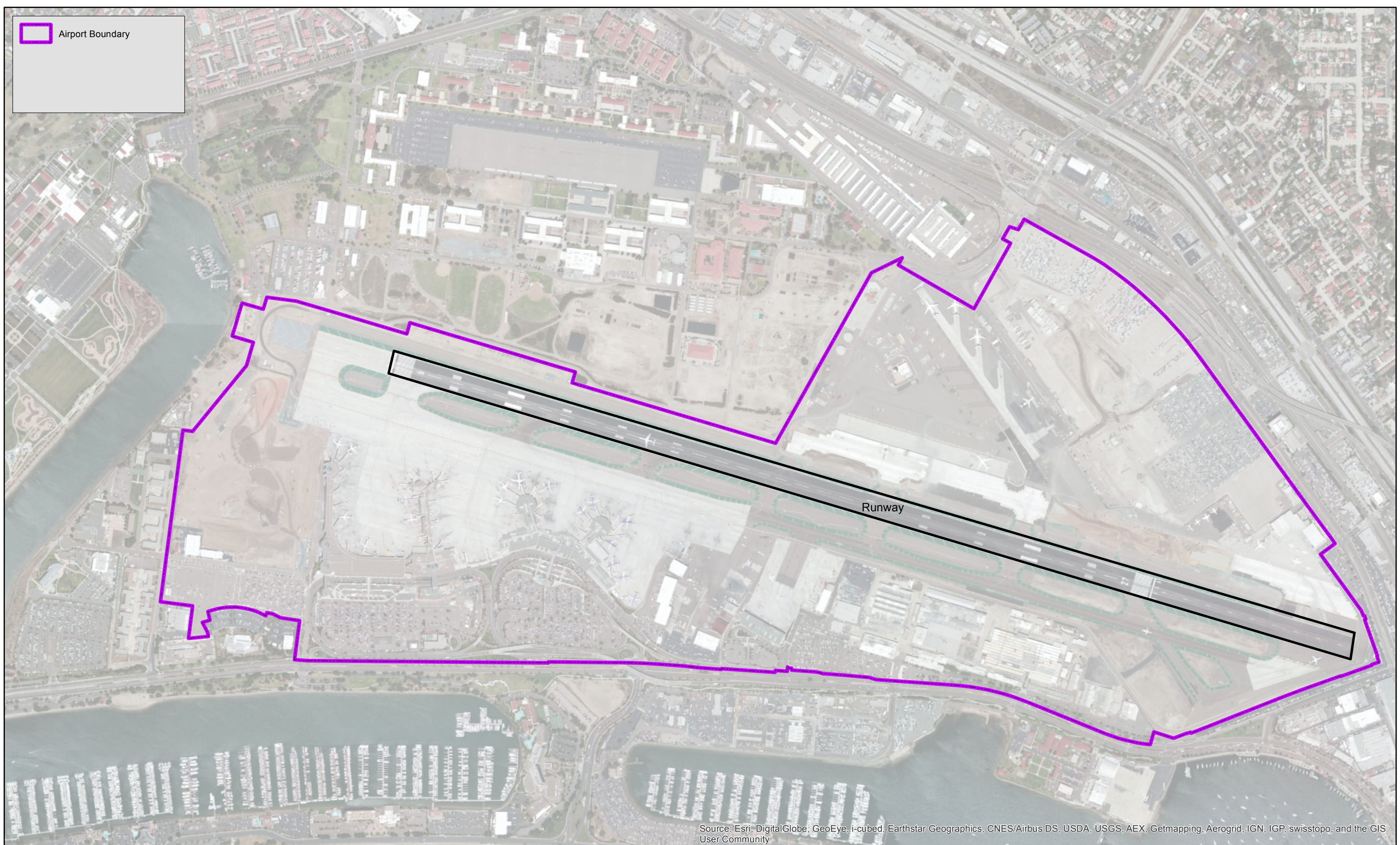


BMP SC15	RUNWAY RUBBER REMOVAL	
PURPOSE: Eliminate discharges to the storm drain of particulate rubber and other pollutants generated by runway rubber removal activities.	TARGETED ACTIVITIES: → Runway Rubber Removal	
POLLUTION PREVENTION:		POLLUTANTS of CONCERN:
<input type="checkbox"/>	Implement the following pollution prevention practices and BMPs to prevent non-storm water discharges of particulate rubber and other pollutants generated by runway rubber removal activities to the storm water collection system: <input type="checkbox"/> Use biodegradable or non-toxic cleaning products for runway rubber removal activities.	→ Rubber particles → Dirt particles → Metals
OPERATIONS:		APPLICABLE TENANTS/ DEPARTMENTS:
Sub-BMPs - 01 <input type="checkbox"/>	Minimize the amount of water used during runway rubber removal activities.	→ SDCRAA
- 02 <input type="checkbox"/>	Prevent waste water produced from runway rubber removal activities from entering the storm drainage system by immediately collecting and properly disposing of it.	
- 03 <input type="checkbox"/>	Use manual or mechanical cleaning methods such as mechanical street sweepers to remove rubber particulates from the runway and adjacent paved areas following runway rubber removal activities.	
- 04 <input type="checkbox"/>	Inspect storm drain inlets, catch basins, and runway drainage areas following runway rubber removal activities for any resulting debris, and remove and properly dispose of debris.	
- 05 <input type="checkbox"/>	Use reclaimed water, where possible.	
STRUCTURAL TREATMENT BMPs: Refer to BMP TC01 for information on structural treatment BMPs.		
BMP FREQUENCIES/EQUIPMENT/TOOLS: Runway rubber removal frequencies and tools are described in Section 7.0.		
AUTHORIZED LOCATIONS FOR RUNWAY RUBBER REMOVAL ACTIVITIES:		
<input type="checkbox"/>	Perform all runway rubber removal activities in the designated areas as shown in the attached map.	
Date:	Version: 1.0	

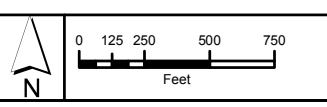
Intentionally Left Blank

 Airport Boundary



Source: Esri, DigitalGlobe, GeoEye, i-cubed, Earthstar Geographics, CNES/Airbus DS, USDA, USGS, AEX, Getmapping, Aerogrid, IGN, IGP, swisstopo, and the GIS User Community

PROJECT: 5013-11-0003
DATE: 6/16/2015
DRAWN BY: KMB
CHECKED BY: AJA



SAN DIEGO
INTERNATIONAL AIRPORT
San Diego, California

STORM WATER MANAGEMENT PLAN
AT SAN DIEGO INTERNATIONAL AIRPORT

Intentionally Left Blank