

# *San Diego International Airport Art Program*

*arrive depart be inspired*



*Public Art Update*

## **Terminal Development Program Board Committee October 20, 2010**

Constance Y. White

Art Program Manager



San Diego  
International Airport  
Art Program

*arrive depart be inspired*

## Temporary and Rotating Exhibits Program

Creatures of Industry  
**Greg Brotherton**  
Commuter Terminal



Art Through Clay  
**San Diego Potters Guild**  
Terminal 2 West Gate 33

Water In Focus  
**Outside the Lens**  
Terminal 2 Connection Corridor

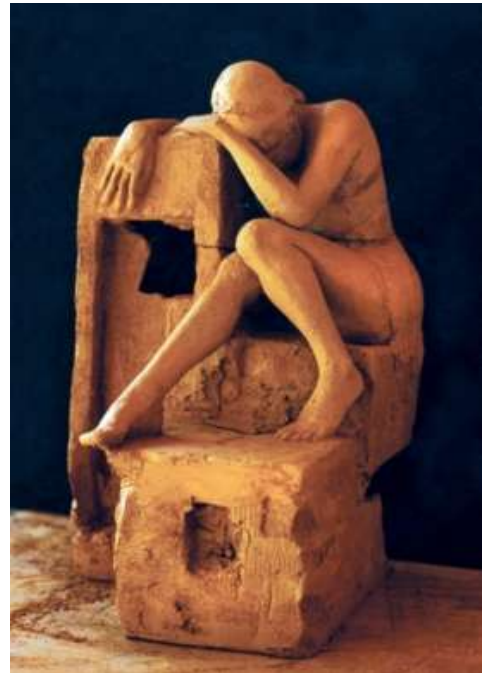


## Temporary and Rotating Exhibits Program



**Global Exchanges**  
**Creative Connections**  
**Frances Parker Middle and Upper Schools**  
**Terminal 2 Youth Art Wall**

**Athenaeum Music and Arts Library**  
**School of the Arts**  
**Terminal 2 East**

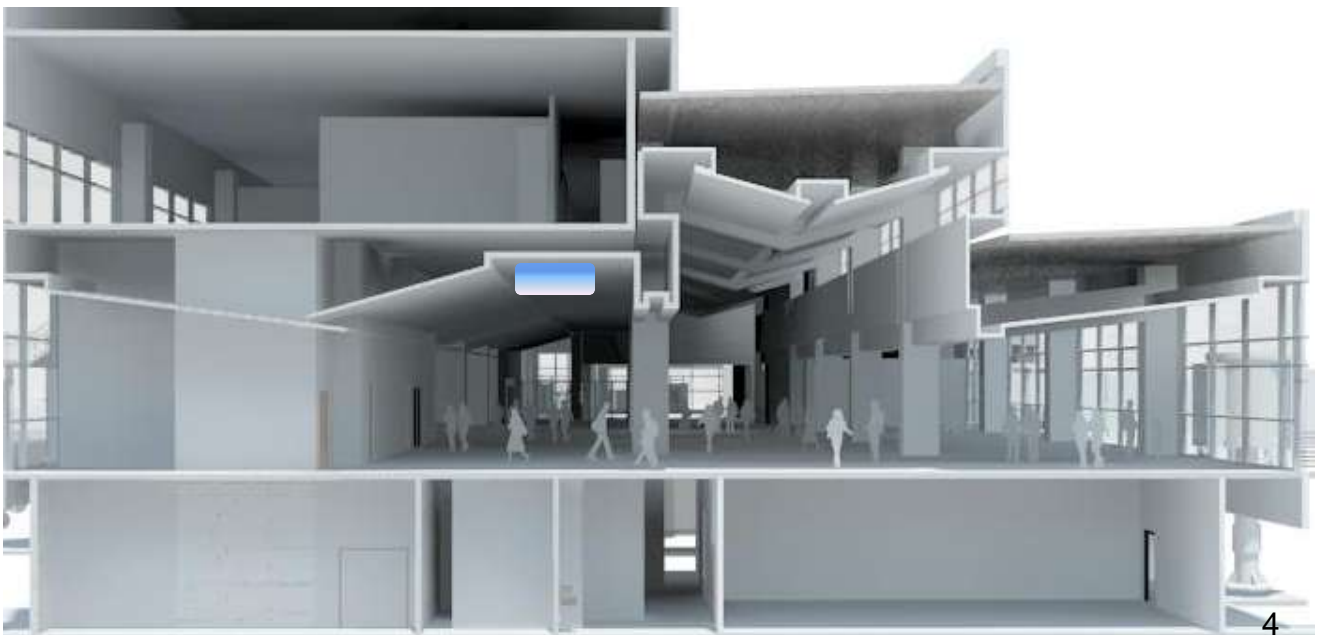


**Instrumental Voices**  
**Museum of Making Music**  
**Terminal 2 West Bag Claim**

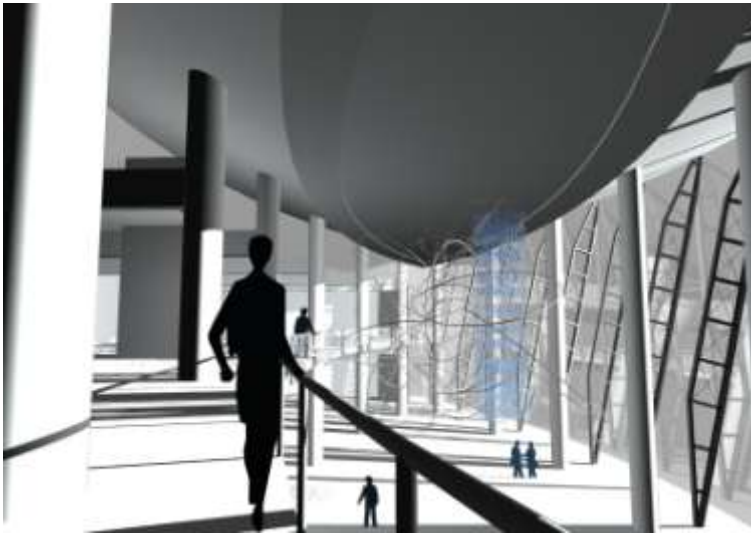


# The Green Build Design Development

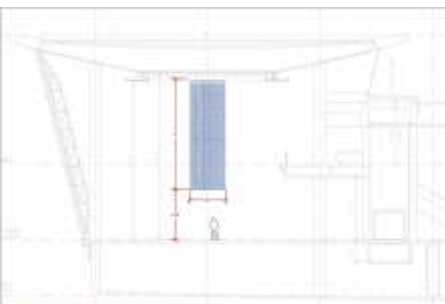
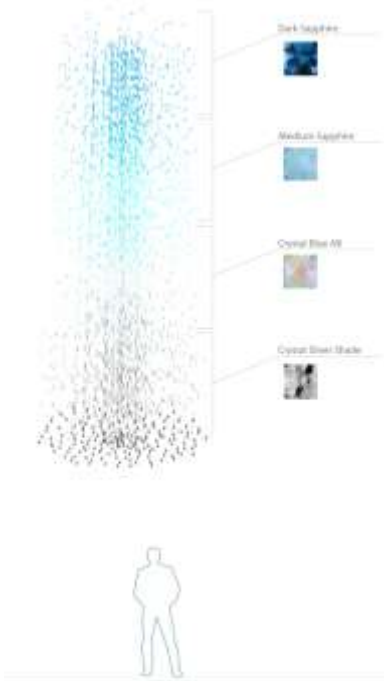
The Journey  
Jim Campbell  
North Concourse



# The Green Build Design Development



Cloud Taxonomy  
**Stuart Keeler**  
Concession Core



# The Green Build Design Development

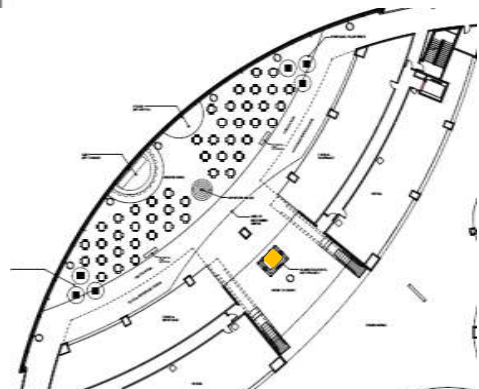
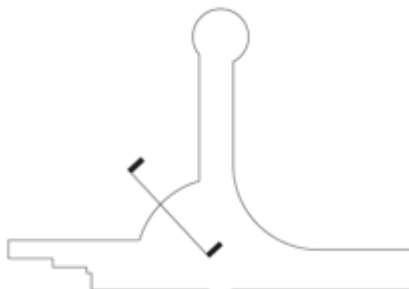


Relativator  
Living Lenses  
Concession Core Elevator

**Artwork Elements**  
**PERSPECTIVE VIEW**  
Exact elevator model TBA



cab electrochromic glass walls display helps trigger the curiosity of passing passengers  
See video simulation for reference.



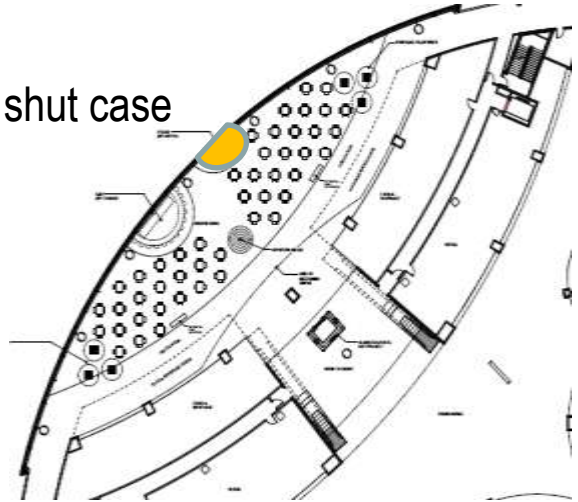
# The Green Build Conceptual Design Contract 1

Performance Venue

**Harries & Heder Collaborative**

Location: Concession Core

**Concept:** Functional /sculptural open and shut case



**Chill Zone**

**Camille Utterback**

Location: Marketplace Rotunda

**Concept:** Multi-sensorial – Interactive - Technology



Reflection Room

**Norie Sato**

Location: Marketplace Rotunda

**Concept:** Earth – Water – Fire

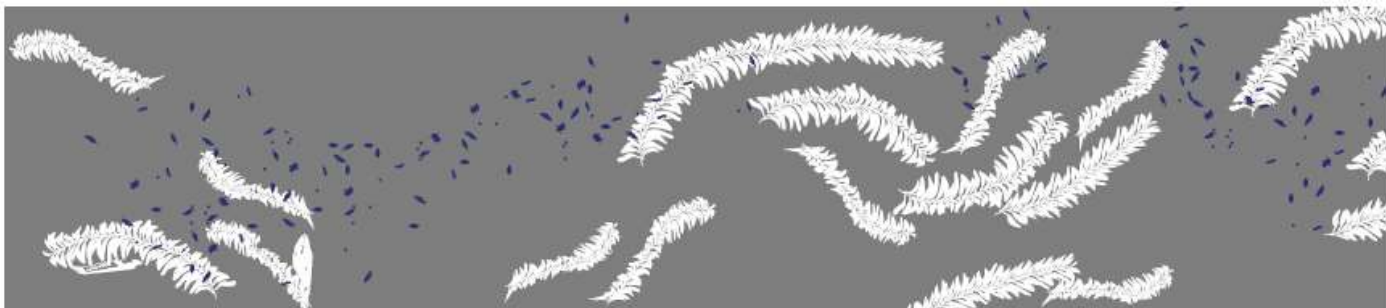


# The Green Build Schematic Design Contract 2

## Elevated Departure Roadway Merge Conceptual Design

Location: Underneath departures roadway structure and pavilion glass

**Concept:** Underwater sea forms using subtle and reflective materials



version 2 - layout w/ kelp - flowing pattern



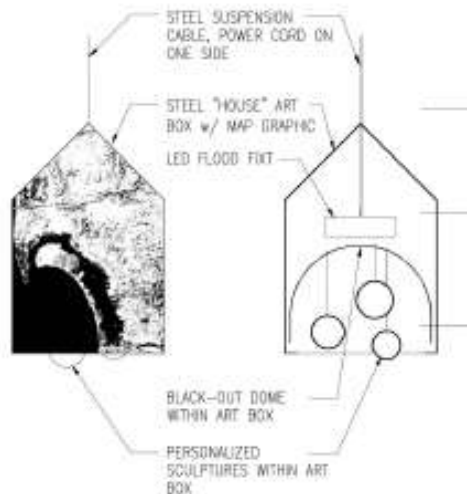
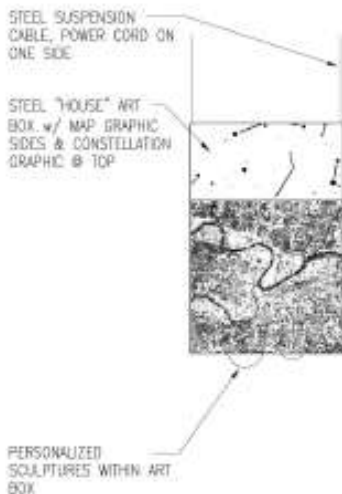
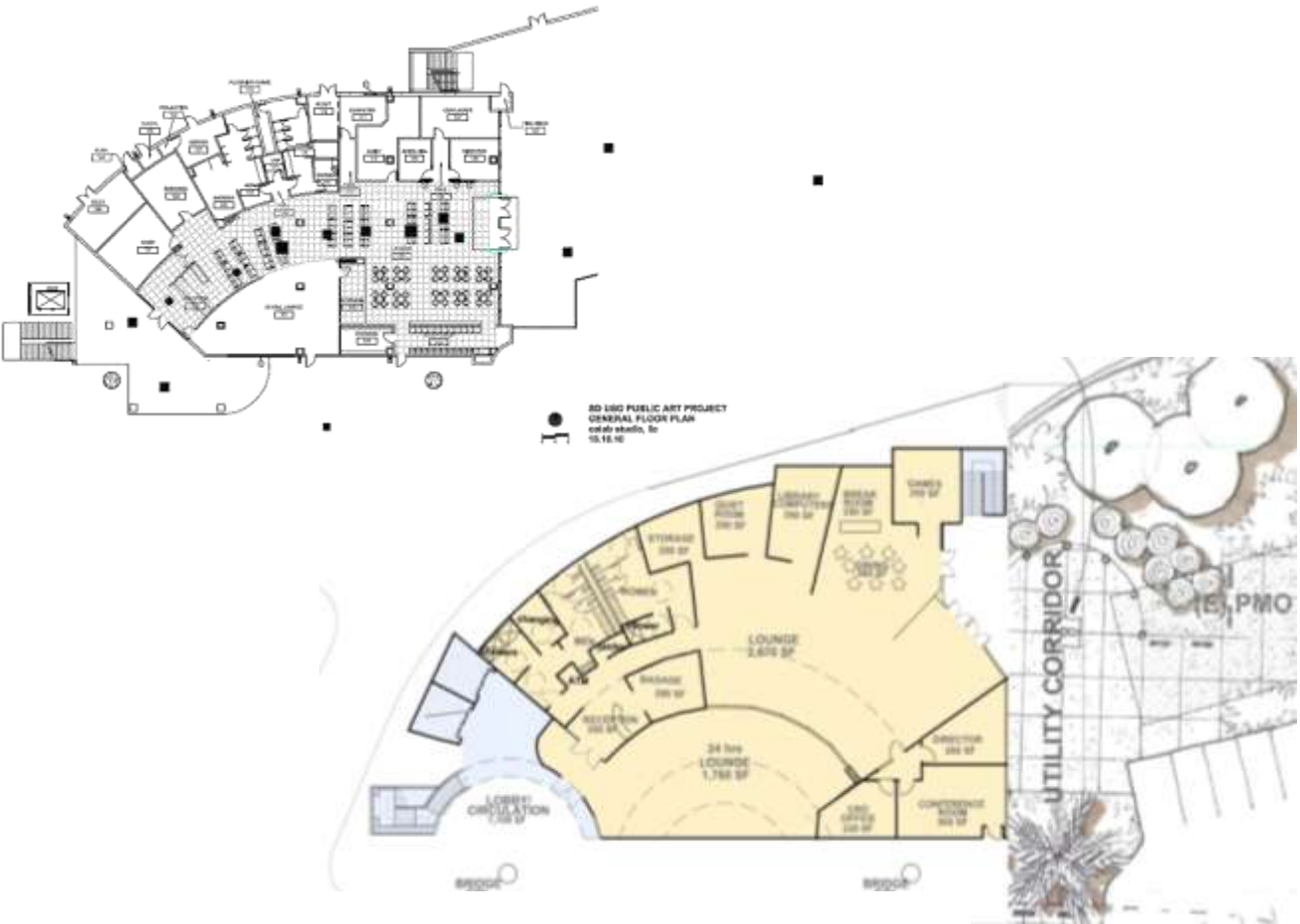
# The Green Build Conceptual Design

## Contract 2

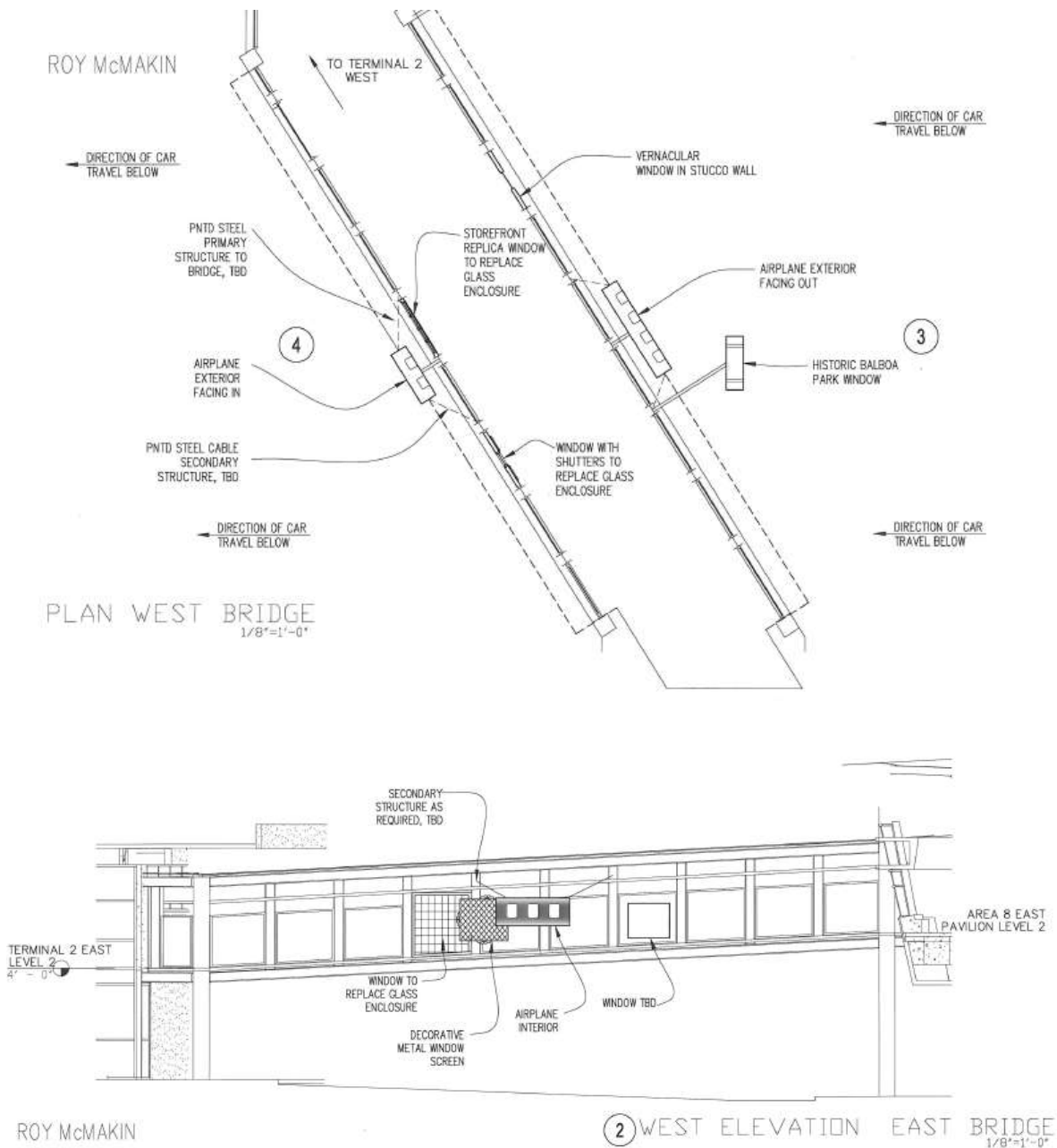
United Service Organizations (USO)  
CoLAB

Location: Entry and exit of exterior plaza and interior ceiling

**Concept:** Community – Connections – Home using light and sculpture



# The Green Build Conceptual Design Contract 2



## Green Build Pedestrian Bridges Roy McMakin

Location: Exterior structure of east and west pedestrian bridges

**Concept:** : Windows of the world inspired by San Diego architecture<sup>10</sup>

1. Artist Residency  
\$118,000
2. Restroom Entry (5 pairs) 9' x 5'  
\$220,000
3. Checkpoint Portal 20' x 12  
\$85,000
4. Western Gates Glass Bays (2) 40.8'  
\$502,000

### Artist Selection :

#### Limited Competition for San Diego artists only

- 3 to 5 short-listed artists for each project
- In-person interviews for all short-listed artists

### Tentative Timeline

RFQ Open:	October 29, 2010
Pre Submittal Meeting	November 12, 2010
Submission Deadline:	December 10, 2010
Review Submissions:	week of Dec 13, 2010
Short-list Interviews:	week of Jan 10, 2011

Questions?