

TDP Committee Meeting

Green Build Update – February 6, 2012

Item 8



San Diego International Airport

The Green Build

Moving Forward. Soaring Higher.



Green Build Site



San Diego International Airport

The Green Build

Moving Forward. Soaring Higher.



Terminal





San Diego International Airport

The Green Build

Moving Forward. Soaring Higher.



Sunset Cove



Courtesy of HNTB



San Diego International Airport

The Green Build

Moving Forward. Soaring Higher.



SAN.ORG
San Diego International Airport

Sunset Cove



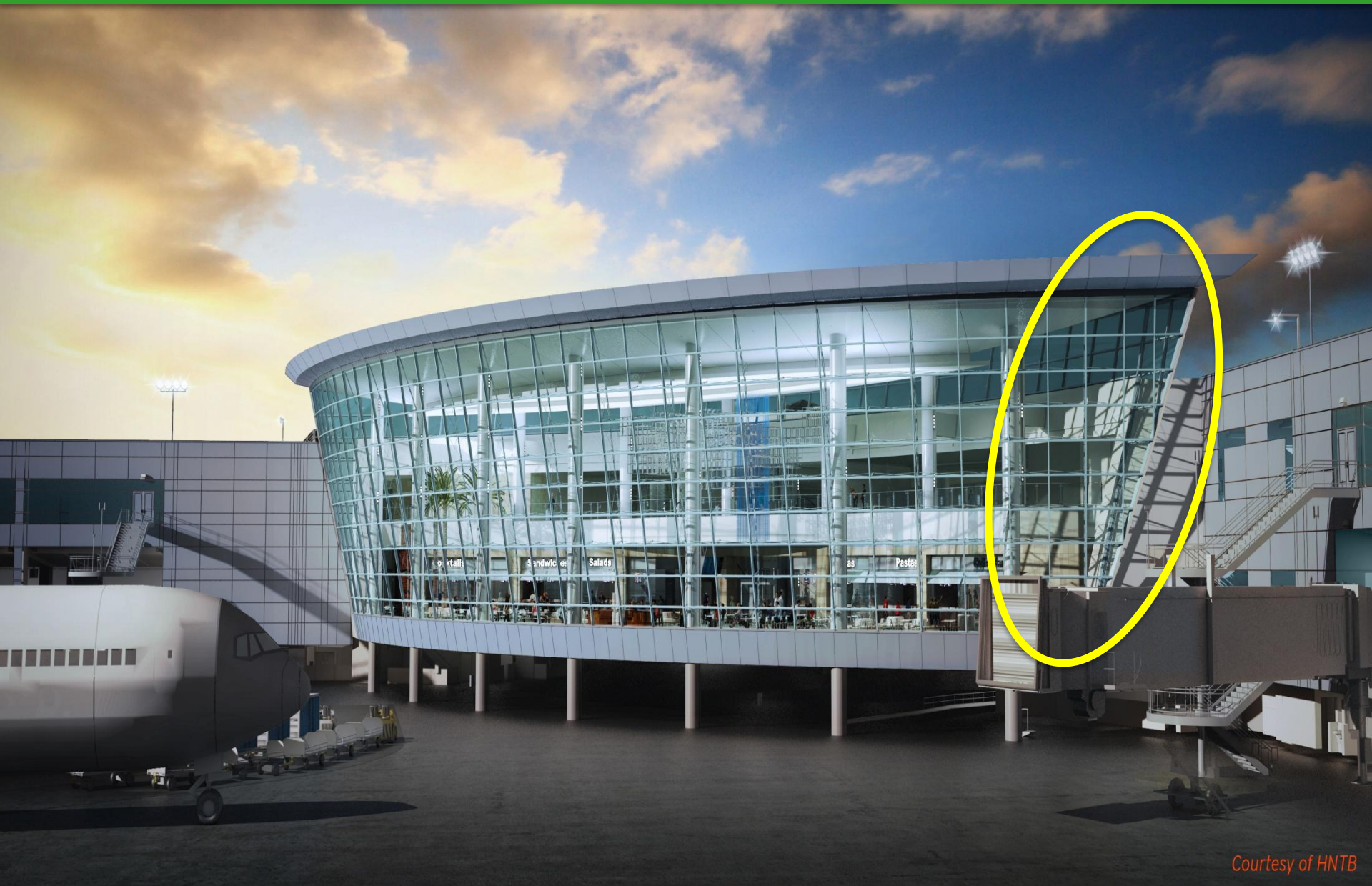
San Diego International Airport

The Green Build

Moving Forward. Soaring Higher.



Curtain Wall



Courtesy of HNTB

San Diego International Airport
The Green Build
Moving Forward. Soaring Higher.



SAN.ORG
San Diego International Airport

Curtain Wall Testing

Los Angeles, California



San Diego International Airport
The Green Build
Moving Forward. Soaring Higher.



Curtain Wall Mock-up





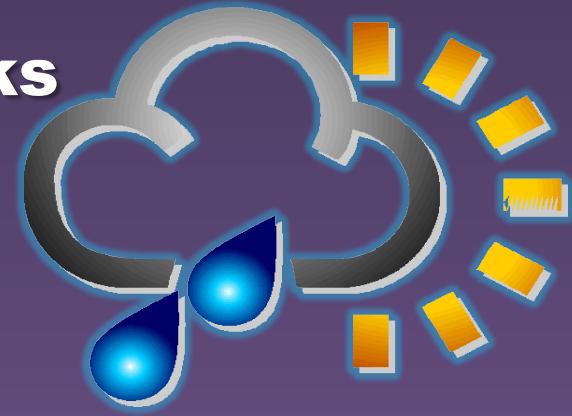
Cycle # 1: Water Intrusion

Wind and no wind to test for leaks

Cycle # 2: Pressure

Glass deflection

Followed by water re-test



Cycle # 3: Lateral Movement – 7 Inches

Followed by water and pressure re-tests

Cycle # 4: Lateral Movement – 12 Inches

Cycle # 1:

Water Intrusion (Static & Dynamic)

1. 5 gallons/hour/square foot for 15 minutes
2. 5 gallons/hour/square foot for 15 minutes with 68 mph wind velocity
3. No leaks allowed

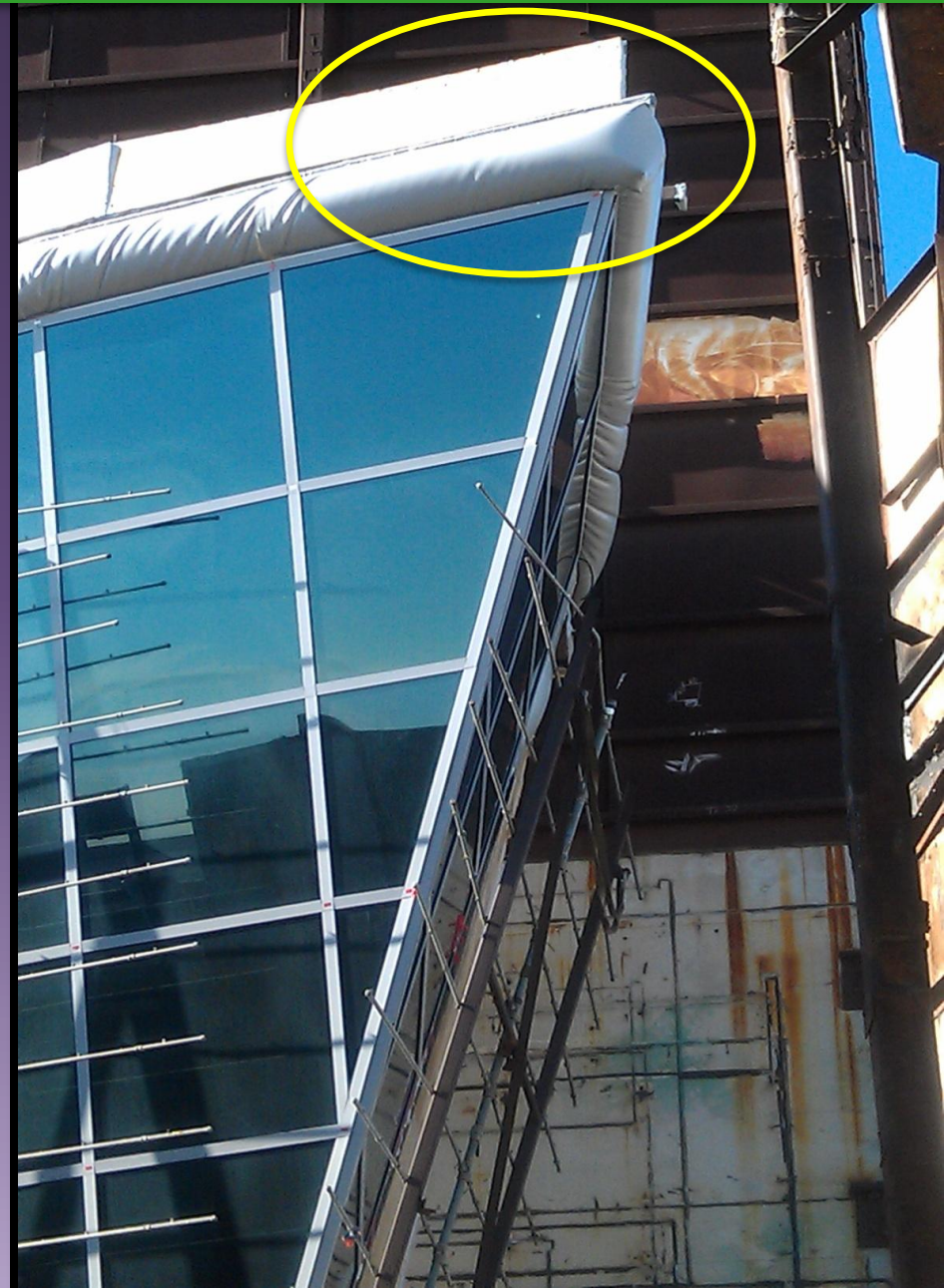


Cycle # 2:

Pressure (Positive & Negative)

1. 25 pounds of pressure per sq. ft. for 10 seconds
2. Deflection - **1/175** inch maximum allowed

Followed by retest for water penetration





Top Connection Plate

Movement Occurs Here



12.27.2011

Top Connection Plate

Lateral Movement Occurs Here

Vertical Movement Occurs Here

12.27.2011



Cycle # 3: Lateral Movement

1. Building structure
“racked” 7 inches in each
direction
2. No damage to curtain wall
allowed

Followed by water and pressure
re-tests





Curtain Wall Testing

Cycle # 4: Lateral Movement

1. Building structure
“racked” 12 inches in
each direction
2. No curtain wall glass can
“pop” out
2. No retesting



We Passed!





San Diego International Airport

The Green Build

Moving Forward. Soaring Higher.



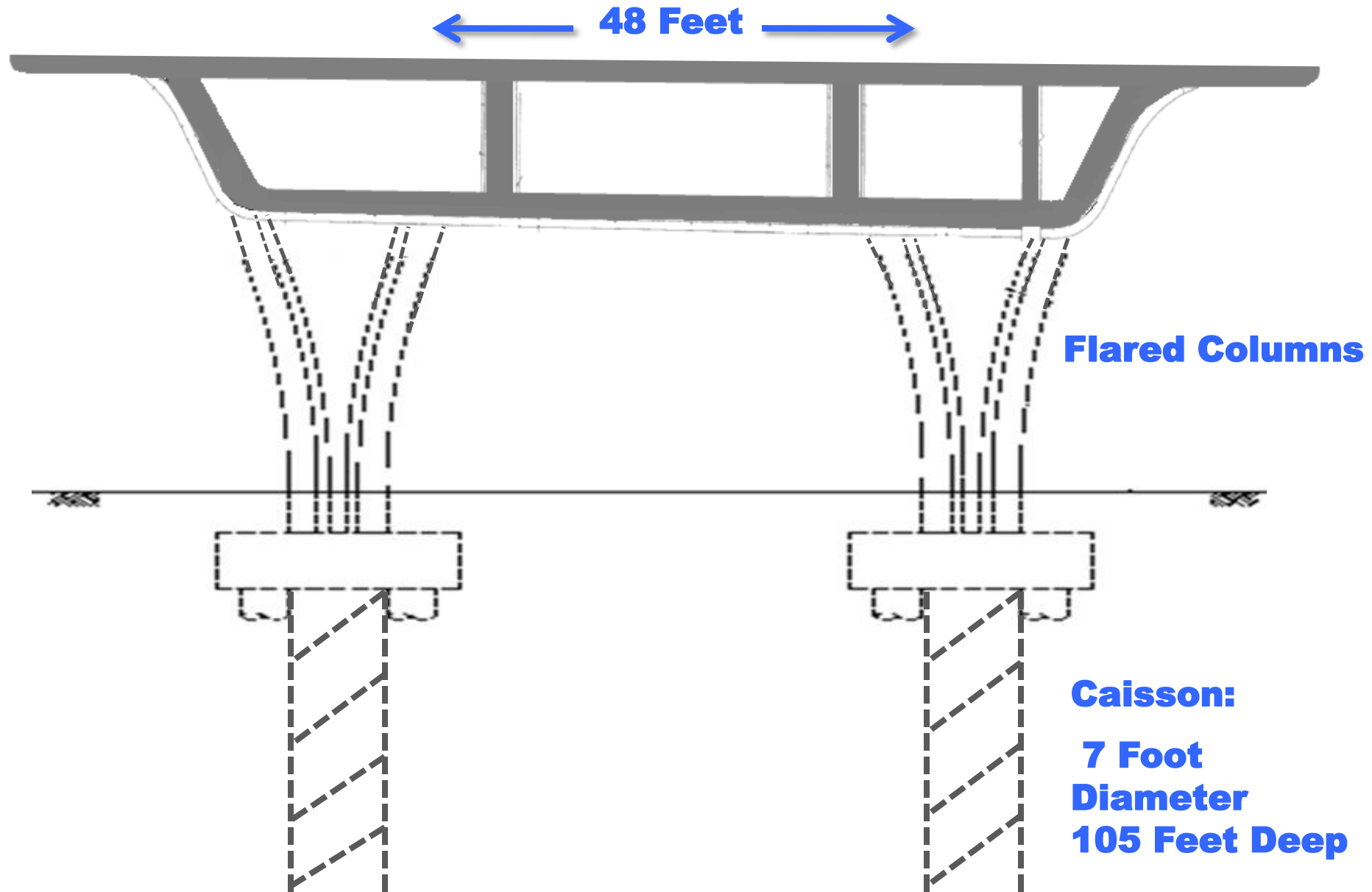
SAN.ORG
San Diego International Airport

Elevated Departures Roadway





EDR Structure



San Diego International Airport

The Green Build

Moving Forward. Soaring Higher.



CIDH Operation



San Diego International Airport

The Green Build

Moving Forward. Soaring Higher.



Columns Forms



San Diego International Airport

The Green Build

Moving Forward. Soaring Higher.



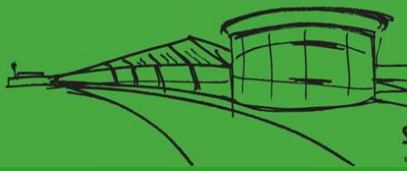
Roadway Columns



San Diego International Airport

The Green Build

Moving Forward. Soaring Higher.



SAN.ORG
San Diego International Airport

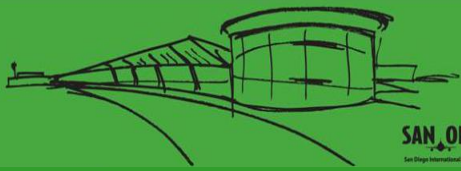
Scaffold for Bridge Deck



San Diego International Airport

The Green Build

Moving Forward. Soaring Higher.



Plywood Bridge Deck





Roadway Cross Section



Pour #1 - Soffit, Stems and Base

San Diego International Airport

The Green Build

Moving Forward. Soaring Higher.



Soffit Forms

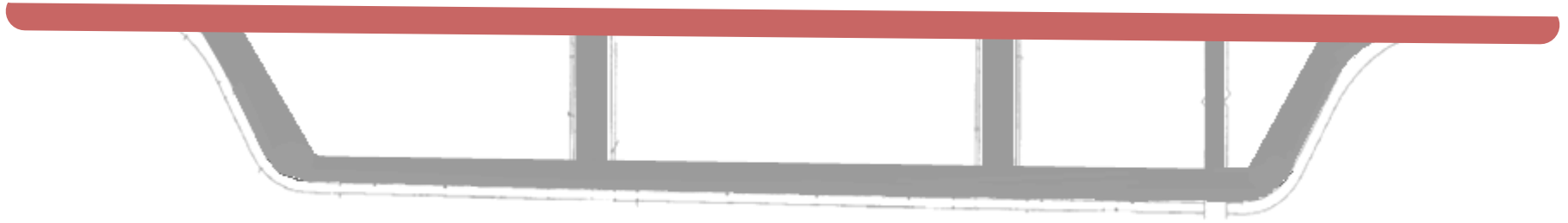


12/16/2011





EDR Cross Section



Pour #2 – Bridge Deck

San Diego International Airport
The Green Build
Moving Forward. Soaring Higher.



Bidwell Paving Machine





Construction Status

100

90

80

70

60

50

40

30

20

10

0

Planned
Actual

33%

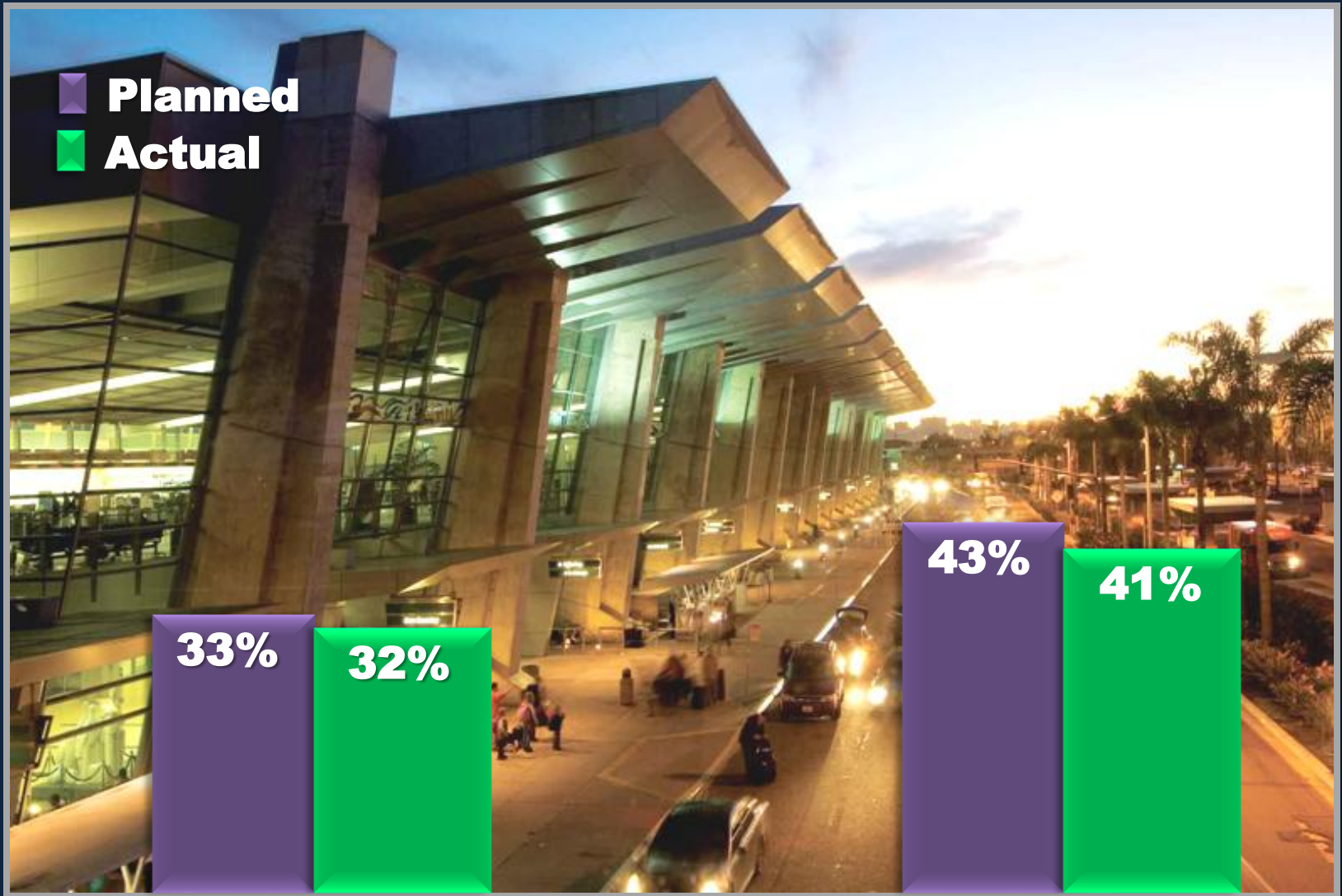
32%

43%

41%

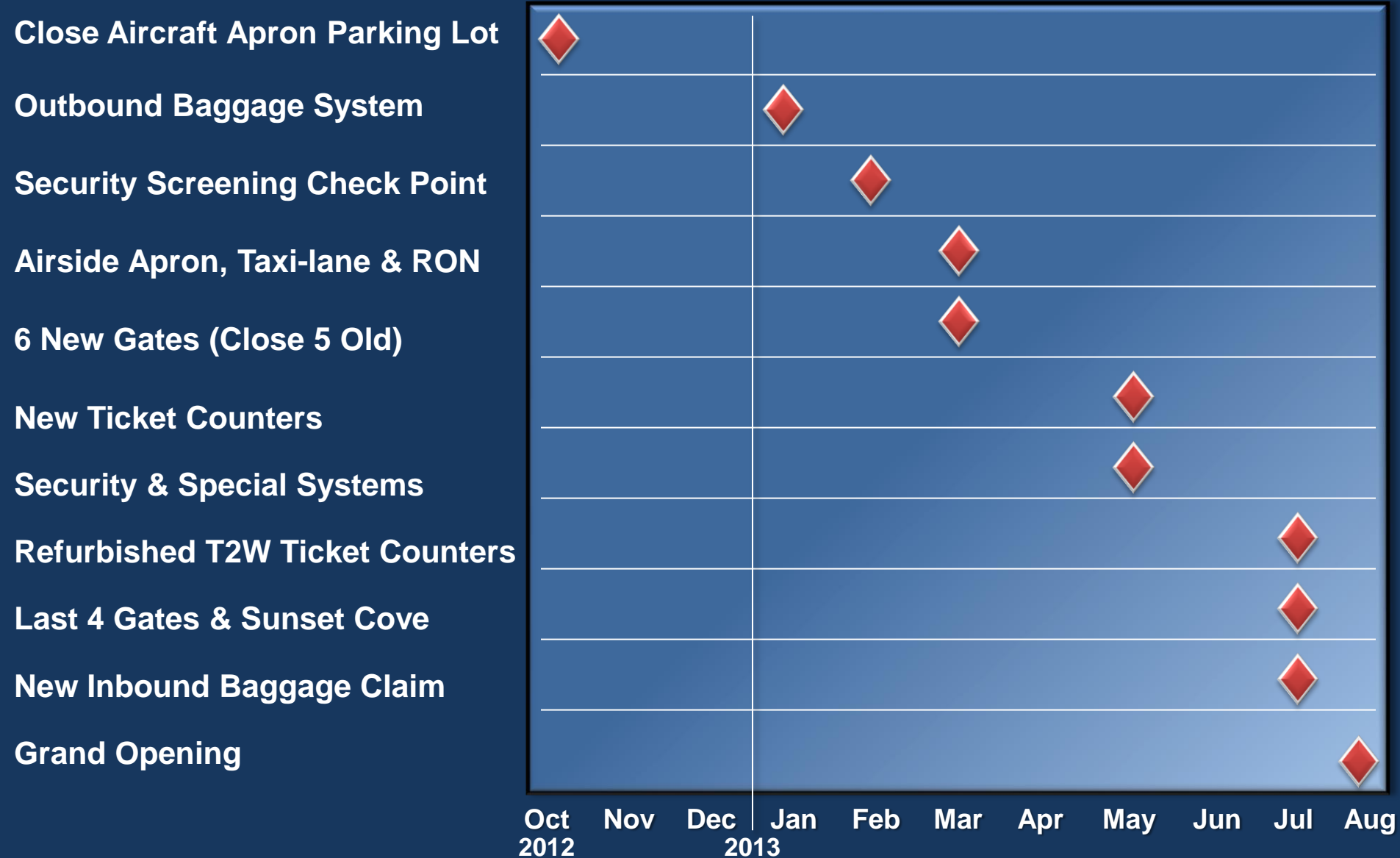
C1 - Airside/Terminal

C2 - Landside





C1 Key Milestones





C2 Key Milestones

Parking Management Office (PMO)



United Service Organization (USO)



700 Short Term Parking Spaces



East & West Smart Curbs



Remaining 600 Short Term Spaces



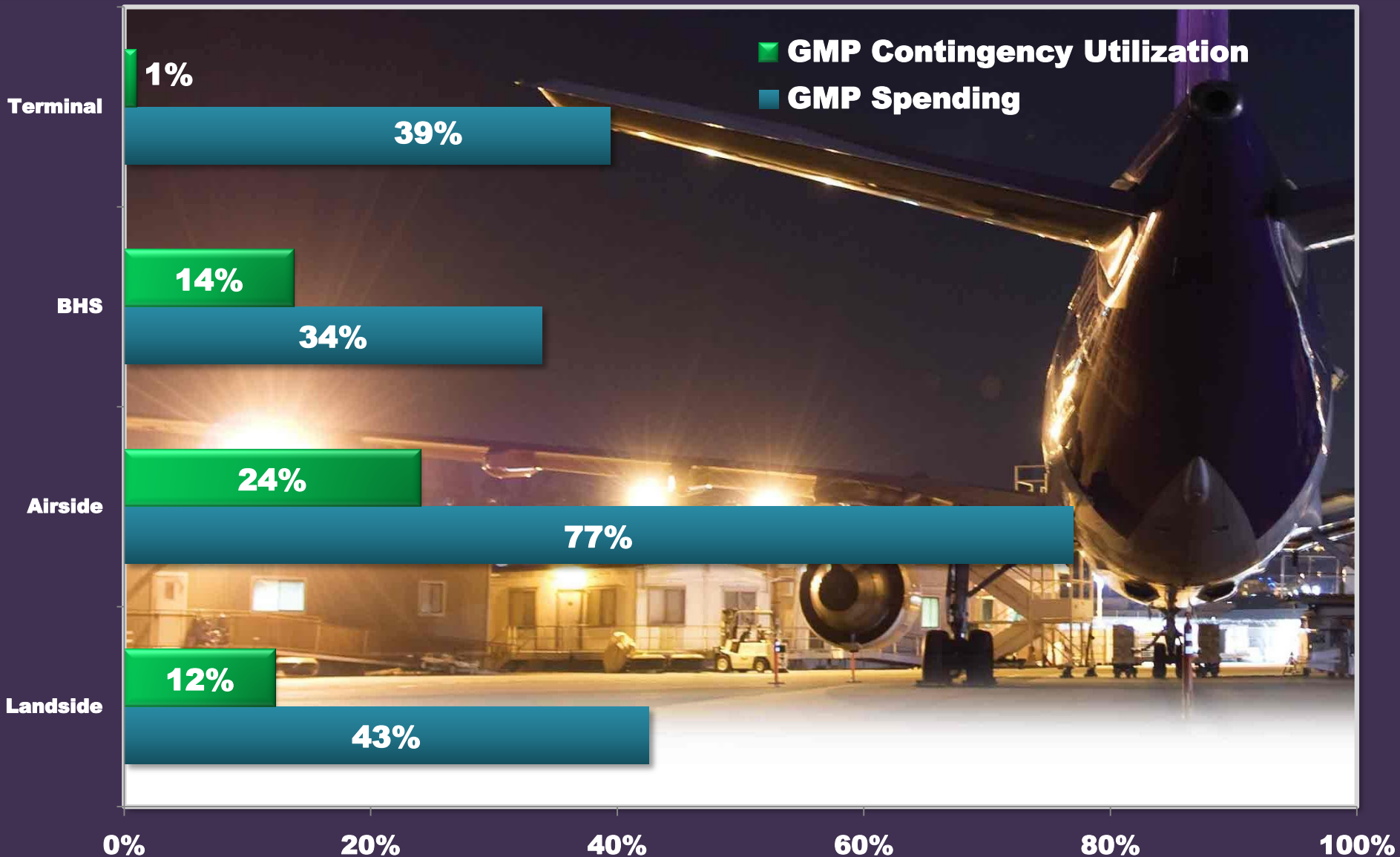
Open Bridges & Roadway



Sept 2012 Oct Nov Dec 2013 Jan Feb Mar Apr May Jun Jul



Contingency Utilization





Data as of 12-31-11

\$1000

\$900

\$800

\$700

\$600

\$500

\$400

\$300

\$200

\$100

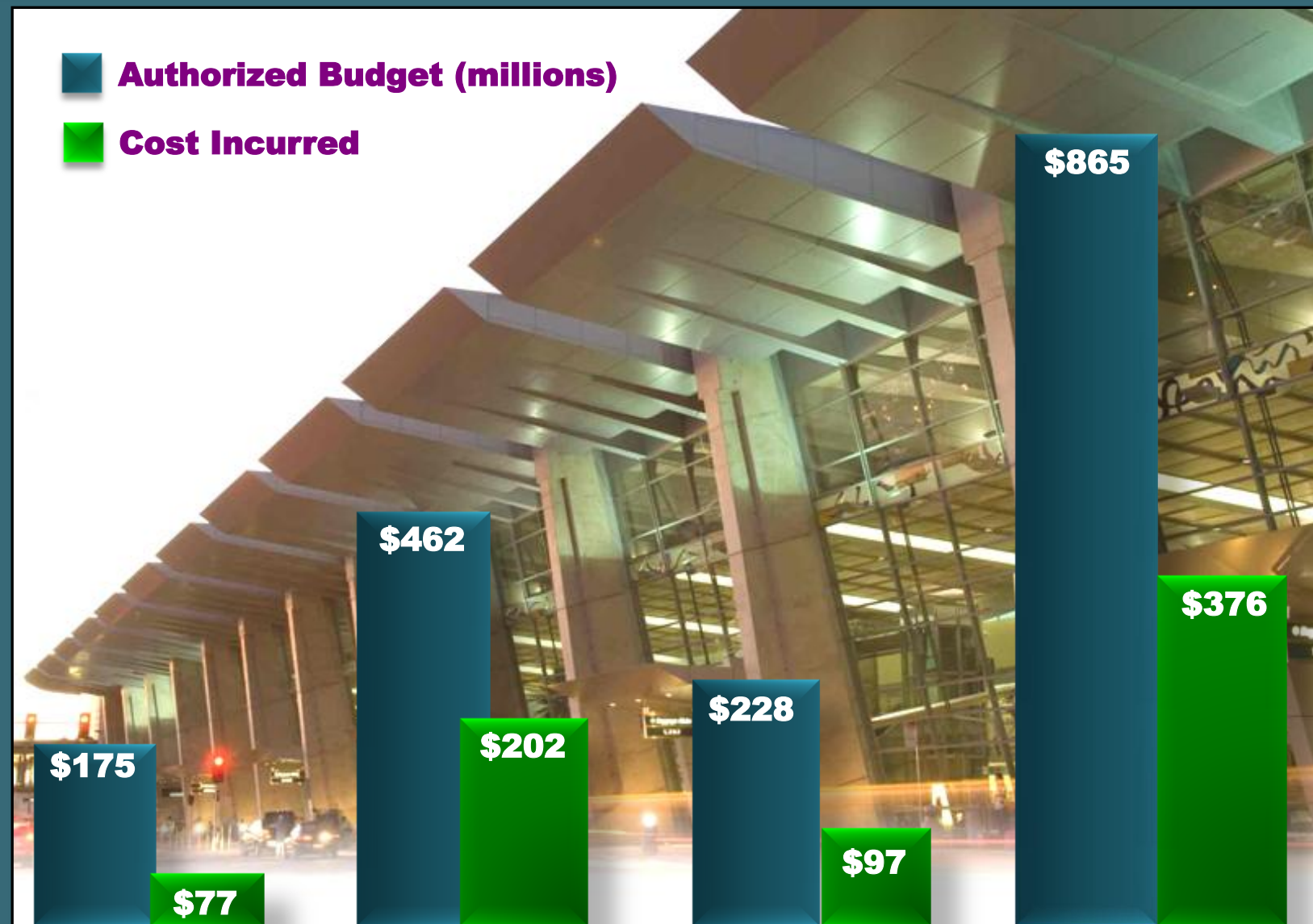
\$0



Authorized Budget (millions)



Cost Incurred

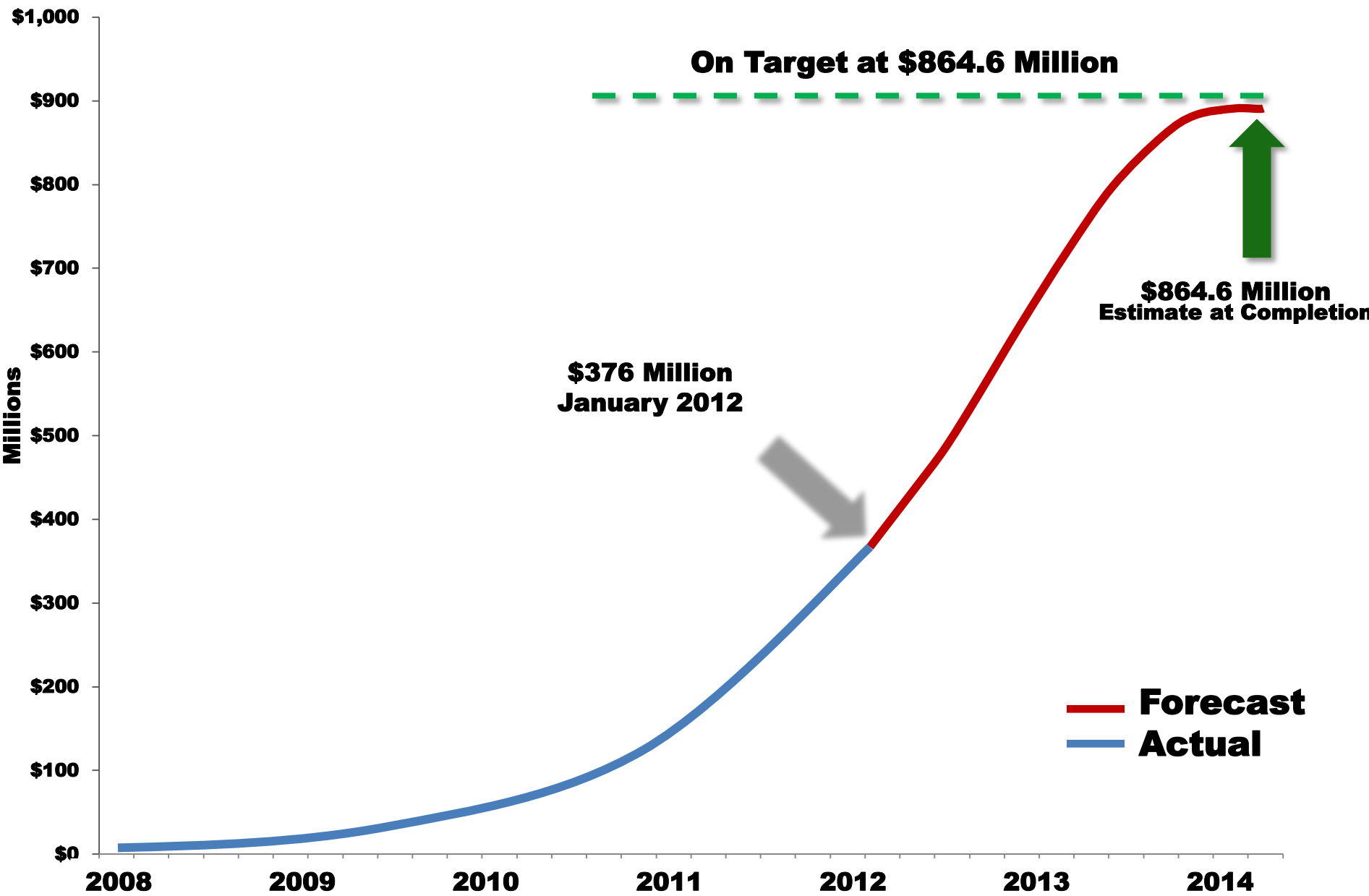


PM/CM/Contingency

C1 - Airside/Terminal

C2 - Landside

Program Total



A scenic view of a city skyline reflected in water under a bright blue sky with a large sun. The sun is a large, bright, glowing orb in the upper right quadrant, casting a soft light across the sky. The sky is a deep blue with wispy white clouds. The city skyline is visible in the distance, with various buildings and structures. In the foreground, there is a body of water that perfectly reflects the sky, sun, and city. The reflection is clear and sharp. The overall mood is peaceful and serene.

Questions?