

Item 5



SAN DIEGO
INTERNATIONAL
AIRPORT

T2E PROJECT UPDATES

CIP Oversight Committee Meeting

June 20, 2013

Presented by: Iraj Ghaemi, Director, Facilities Development

Expand Terminal 2 East Facility

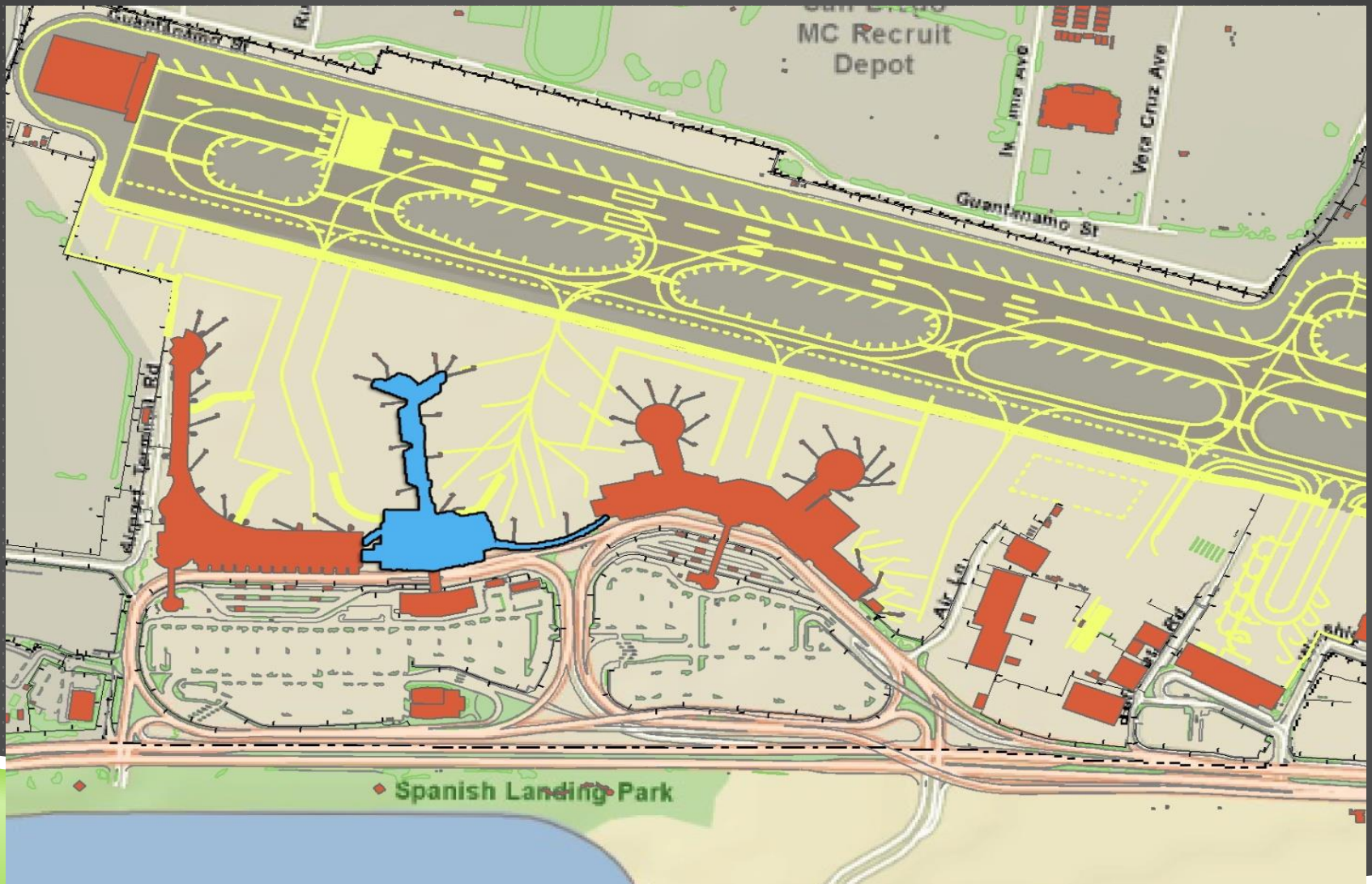
Total Project Budget: \$52 million

Construction Schedule:

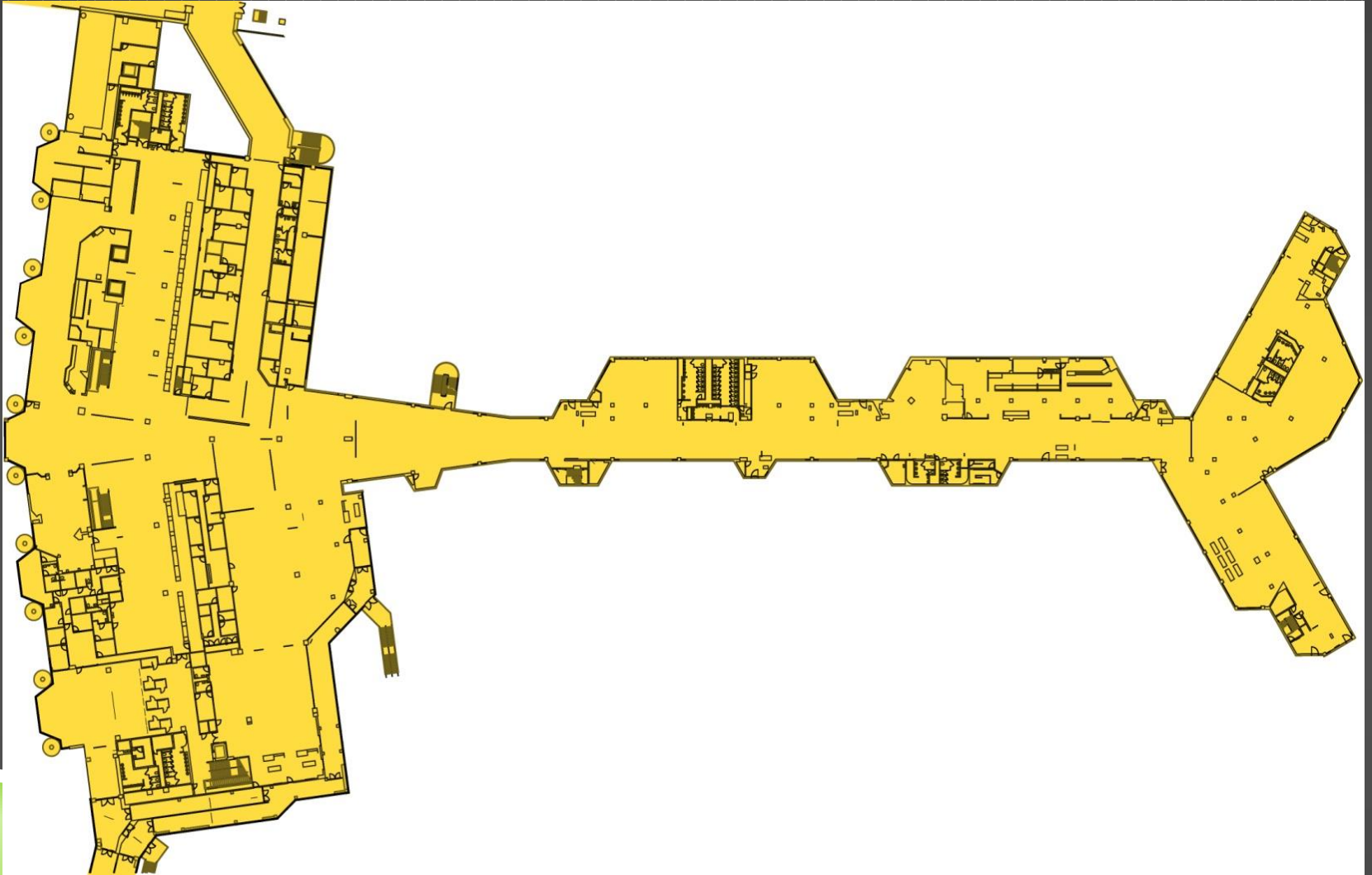
Construction Start: February 2012

Construction End: December 2013

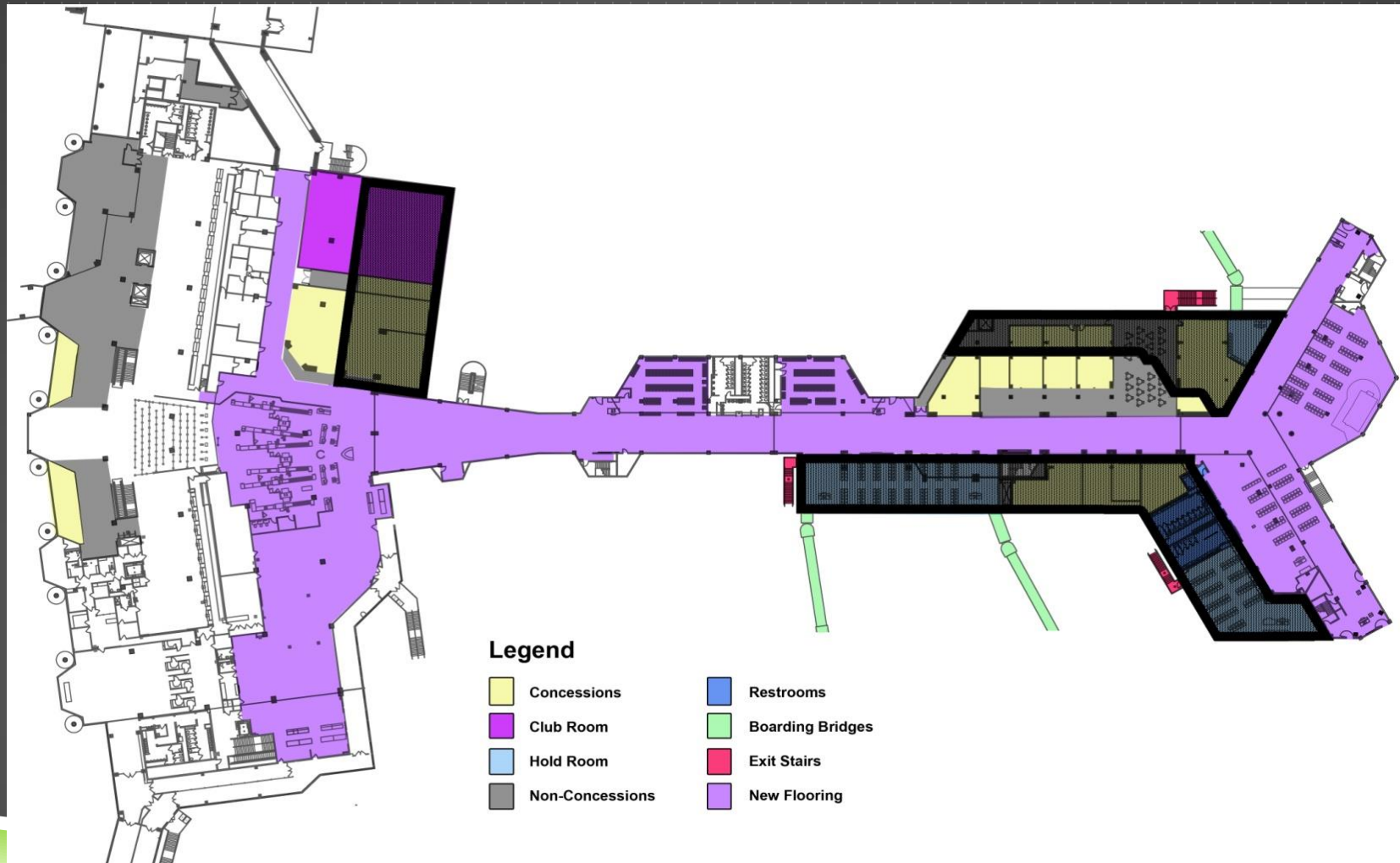
EXPAND TERMINAL 2 - EAST FACILITY



EXPAND TERMINAL 2 EAST FACILITY EXISTING FACILITY

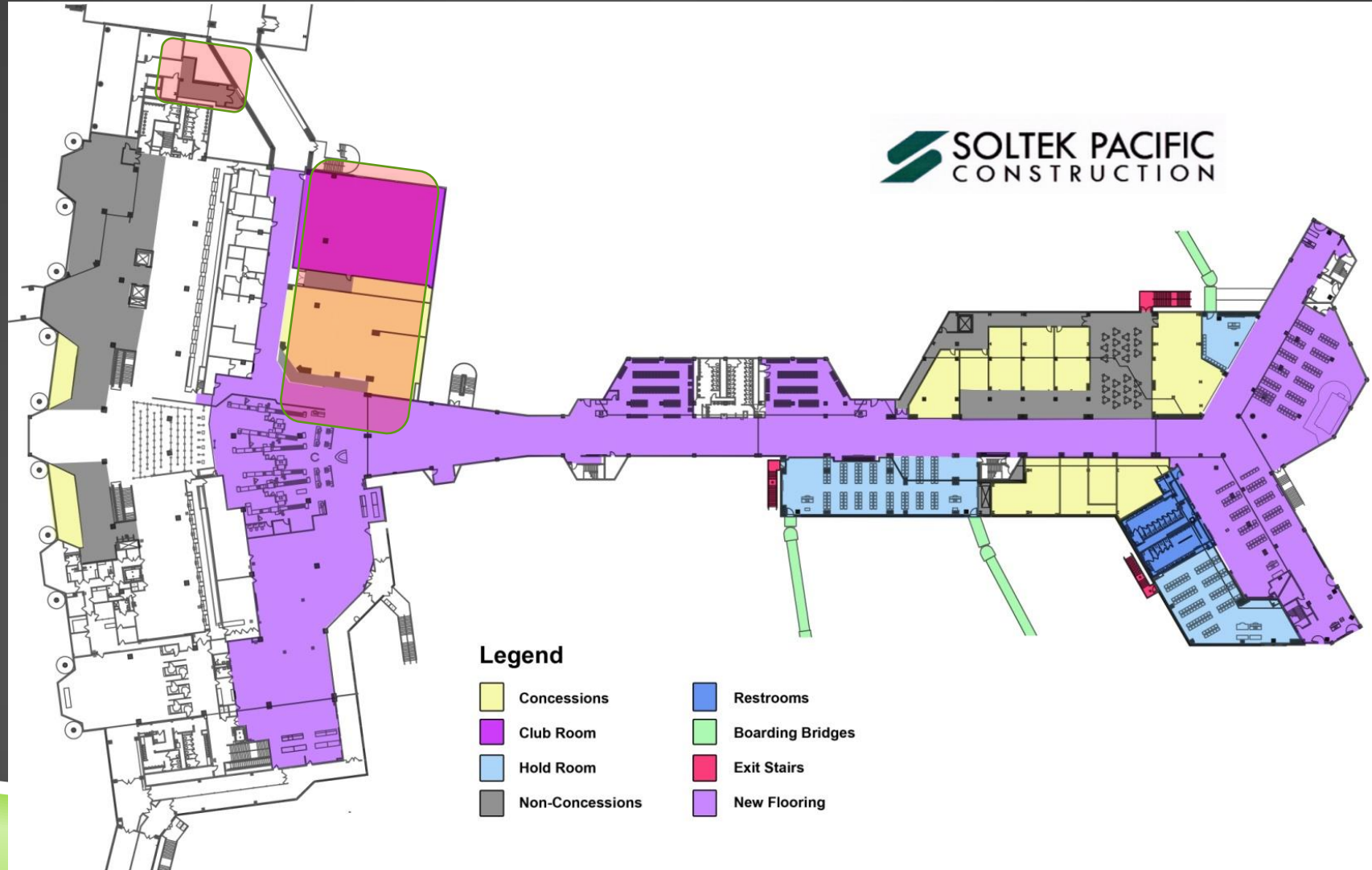


EXPAND TERMINAL 2 EAST FACILITY



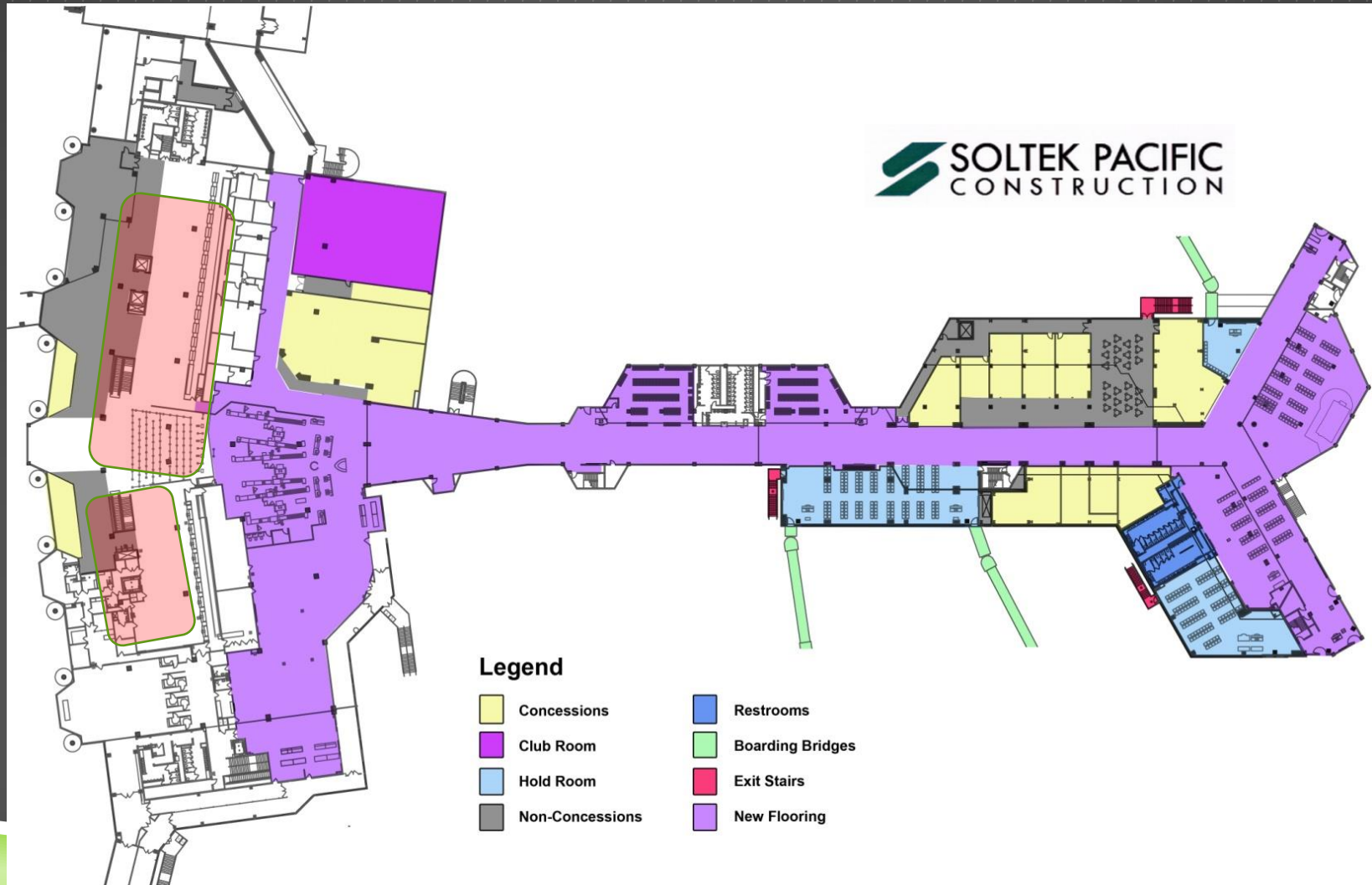
Expanded Terminal 2 East Facility

TERMINAL BUILDING (SOUTH PACKAGE) - POST SECURITY WORK



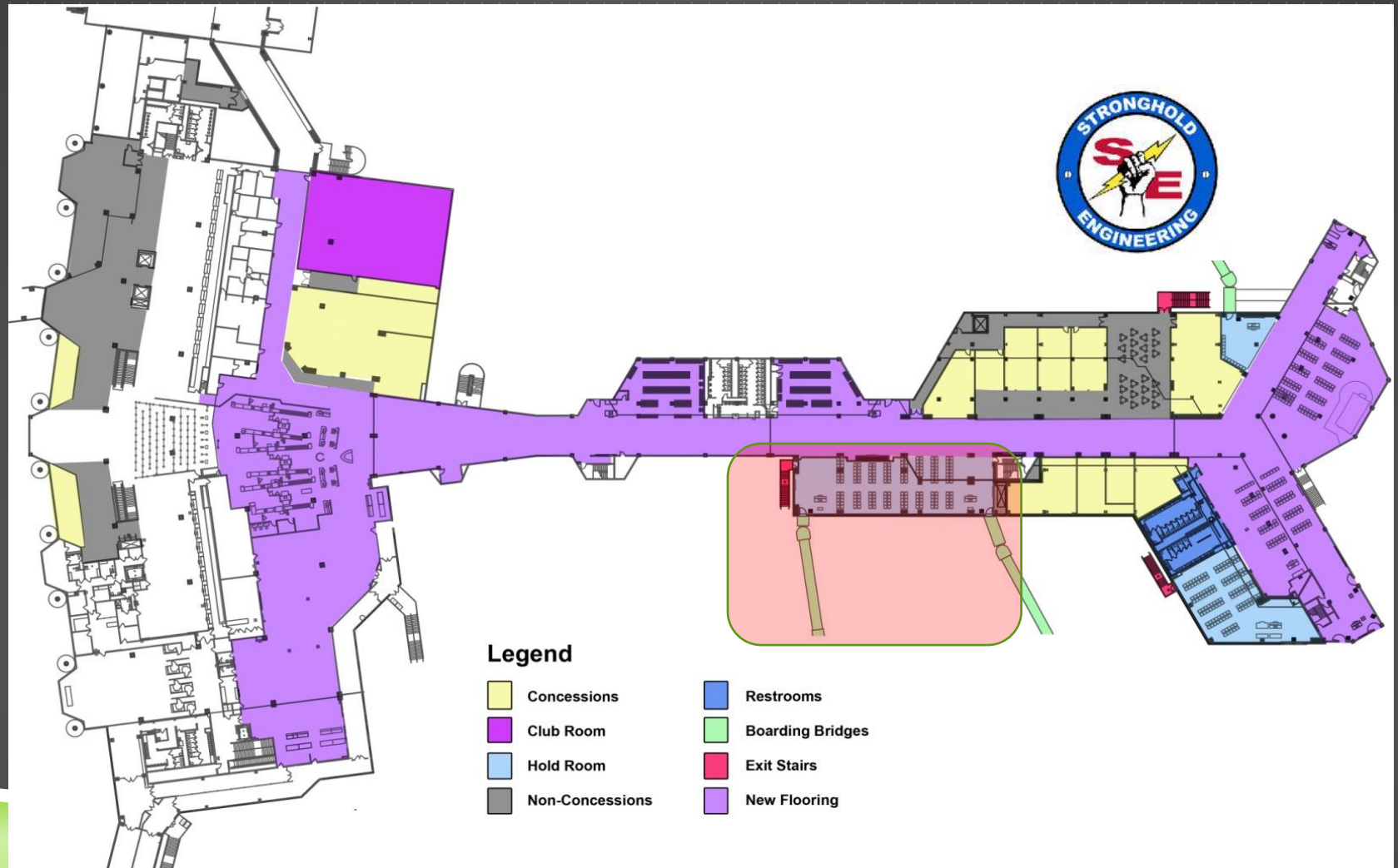
Completed

TERMINAL BUILDING (SOUTH PACKAGE) - PRE SECURITY WORK



Start: 01/14/2013 Completion: 07/15/2013

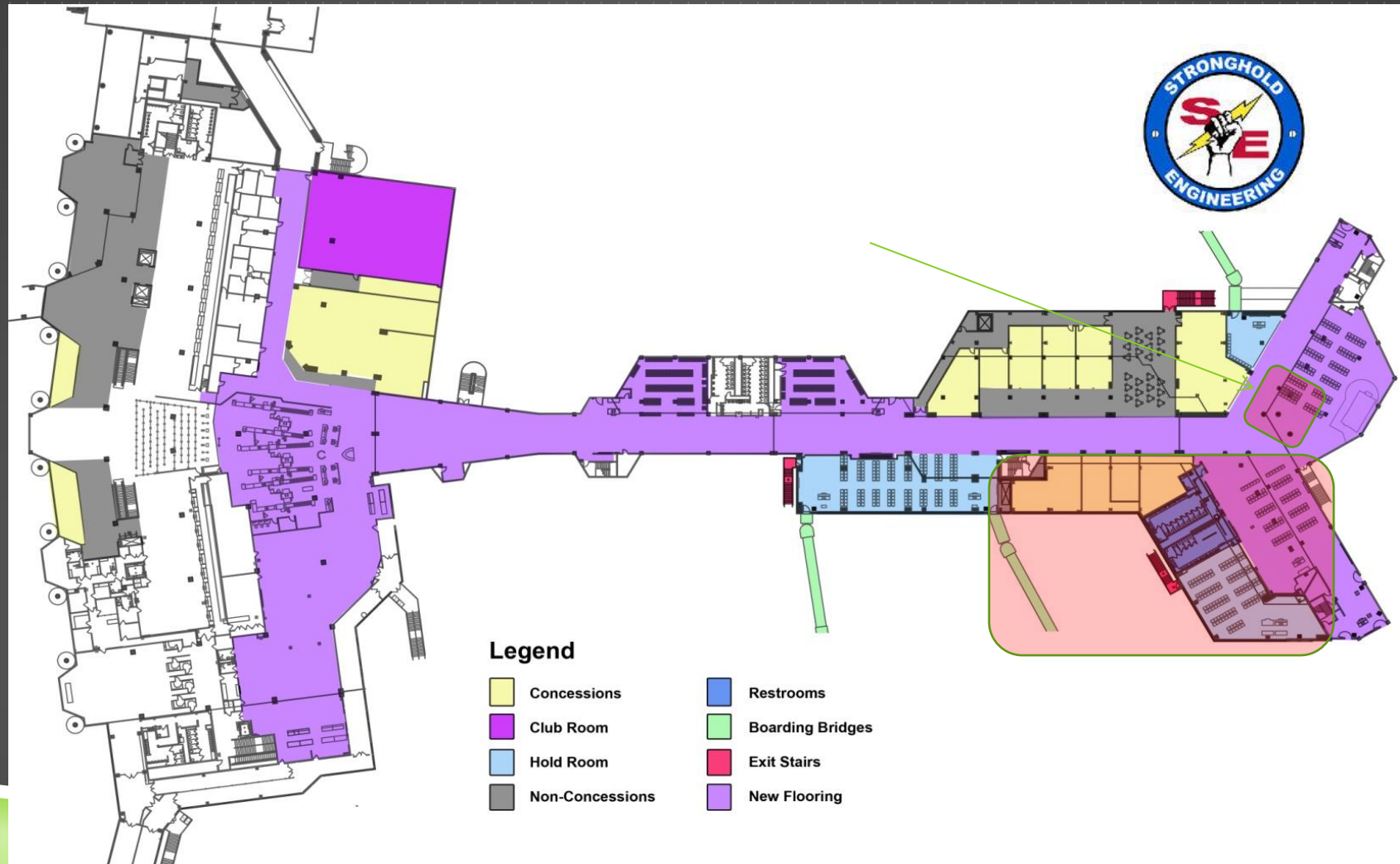
GATES 24- GATE 28 (EAST PACKAGE) PHASE I WORK



Completed

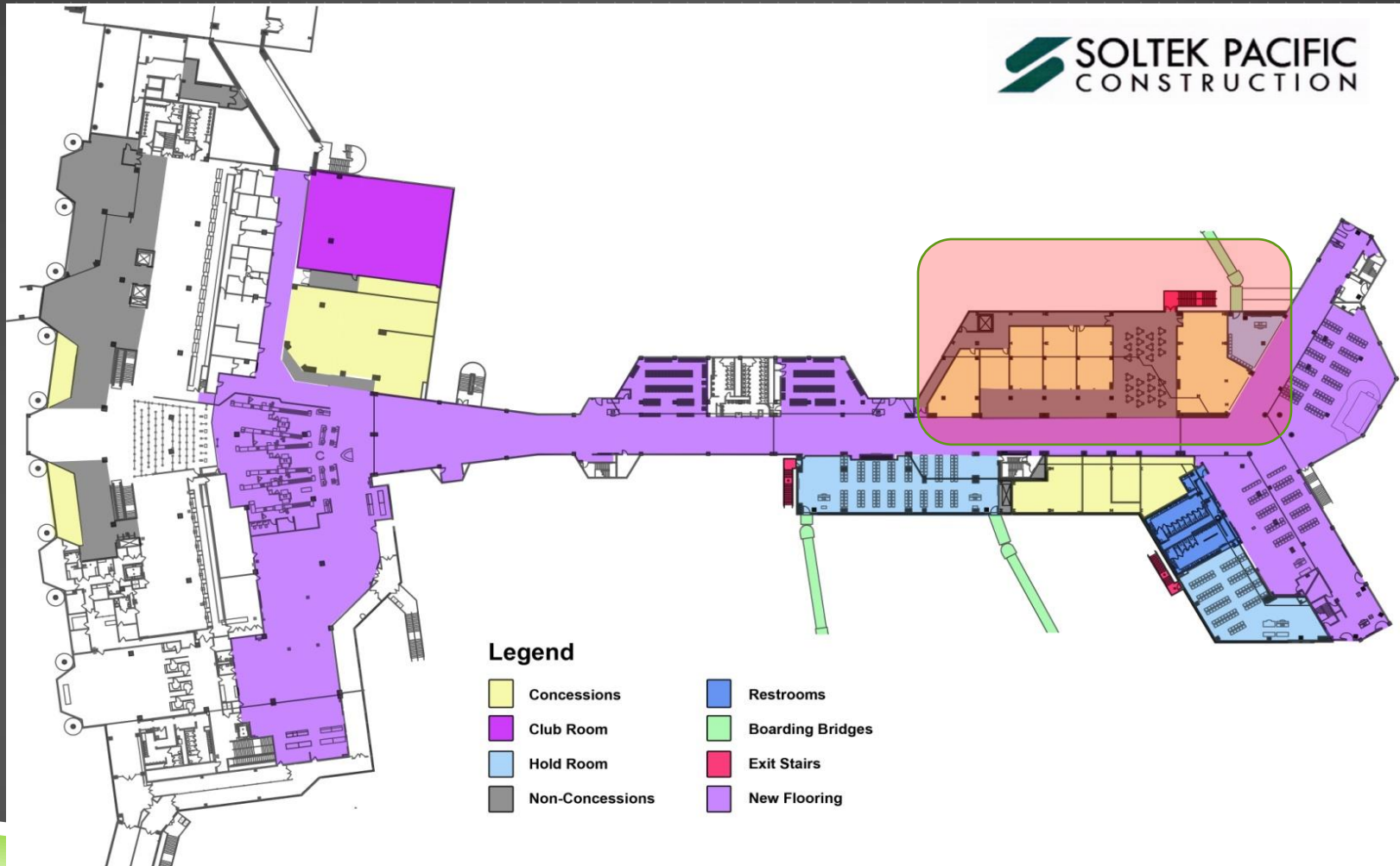
GATES 24- GATE 28 (EAST PACKAGE)

PHASE 2 AND 3 WORK



Start: 11/01/2012 Completion: 06/30/2013

GATES 25 - GATE 27 (WEST PACKAGE)



Start: 01/28/2013 Completion: 12/30/2013

Expand Terminal 2 East Facility

CONSTRUCTION PROGRESS PICTURES



Expand Terminal 2 East Facility

CONSTRUCTION PROGRESS PICTURES



Expand Terminal 2 East Facility

CONSTRUCTION PROGRESS PICTURES



Expand Terminal 2 East Facility

CONSTRUCTION PROGRESS PICTURES



Expand Terminal 2 East Facility

CONSTRUCTION PROGRESS PICTURES



Expand Terminal 2 East Facility

CONSTRUCTION PROGRESS PICTURES



Expand Terminal 2 East Facility

CONSTRUCTION PROGRESS PICTURES



Expand Terminal 2 East Facility

CONSTRUCTION PROGRESS PICTURES



Expand Terminal 2 East Facility

CONSTRUCTION PROGRESS PICTURES



Expand Terminal 2 East Facility

CONSTRUCTION PROGRESS PICTURES



Expand Terminal 2 East Facility

CONSTRUCTION PROGRESS PICTURES



Questions

???