

Capital Improvement Program Oversight Committee



Airport Development Plan Update and
Rental Car Center Update



February 25, 2013

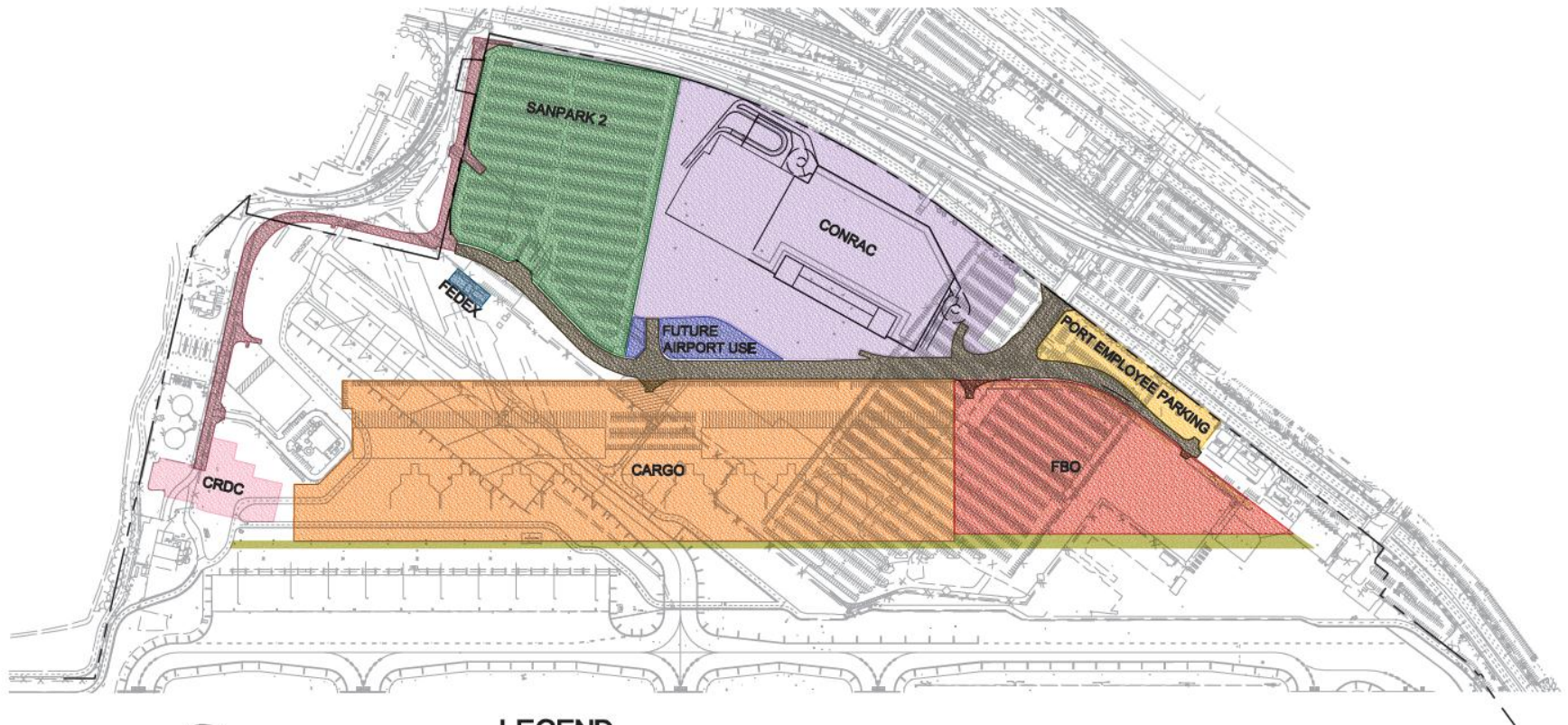
Presentation Topics

North Side Development

Earthquake Fault

Rental Car Center (RCC) Update

North Side Development



NORTH

GRAPHIC SCALE



SCALE: 1" = 400'

LEGEND

	CONRAC		PORT EMPLOYEE PARKING LOT
	FIXED BASE OPERATOR (FBO)		FUTURE AIRPORT USE
	SANPARK 2		NORTHSIDE INTERIOR ROAD
	CARGO		WASHINGTON STREET
	FEDEX		INTERIOR ROAD EAST
	CENTRAL RECEIVING/ DISTRIBUTION CENTER (CRDC)		



VA Consulting, Inc.

ENGINEERS • PLANNERS • SURVEYORS

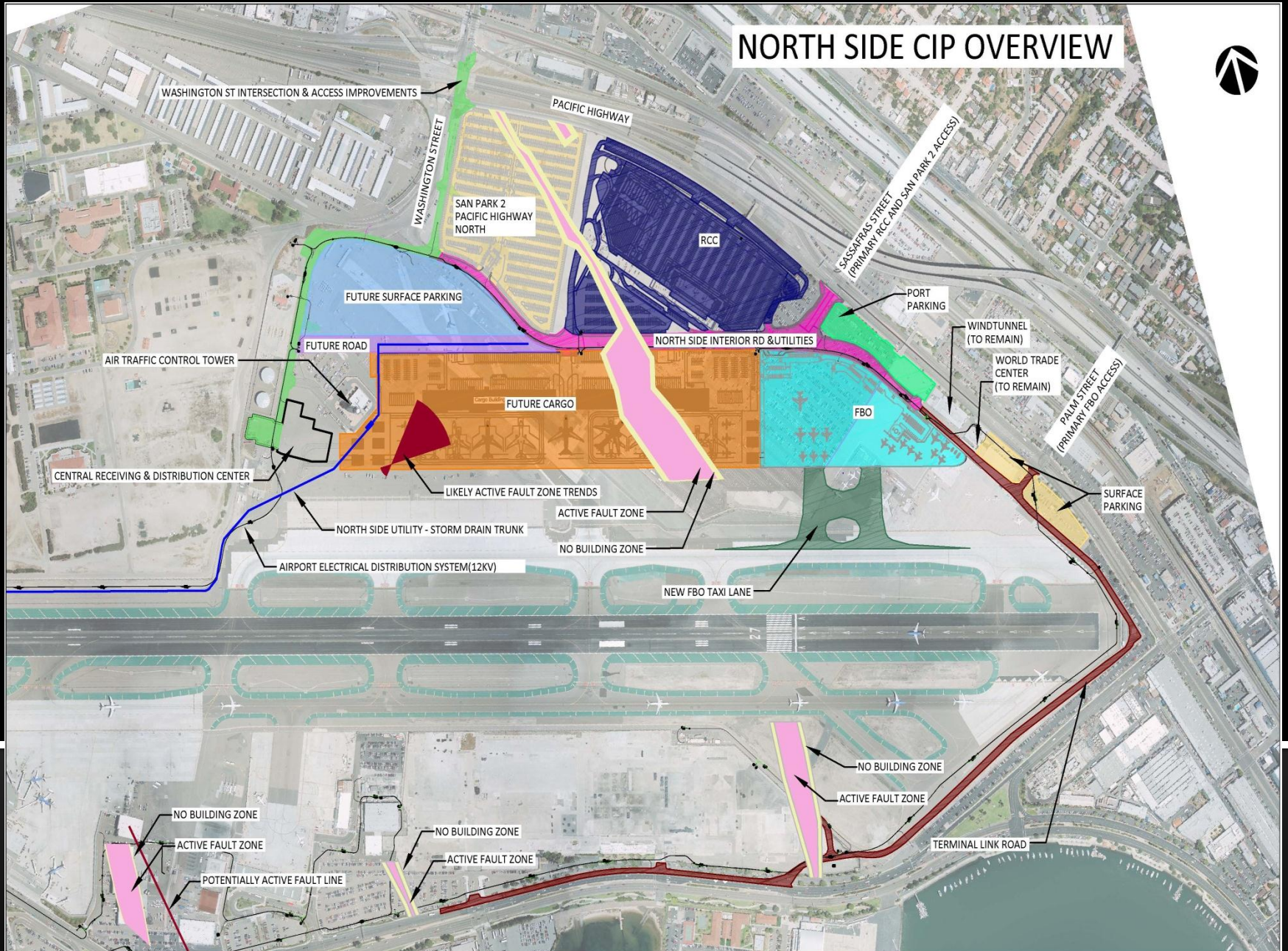
6400 OAK CANYON SUITE 150 (949) 474-1400 TEL
IRVINE, CA 92618 (949) 261-8482 FAX

EXHIBIT 1 - NORTH SIDE AREAS

Planned North Side Improvements

Earthquake Fault

NORTH SIDE CIP OVERVIEW



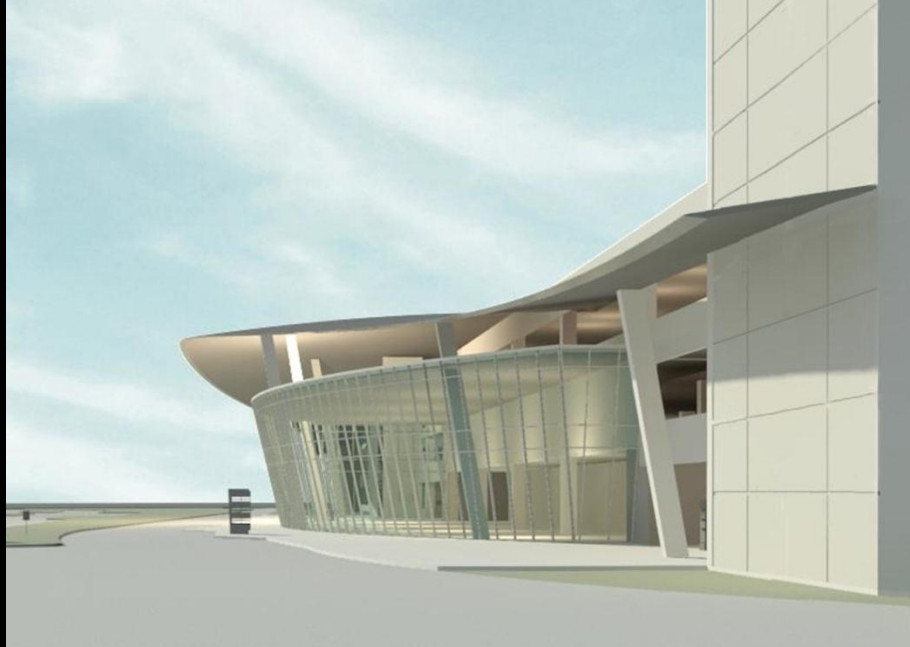
RCC Architectural Concepts & Milestones



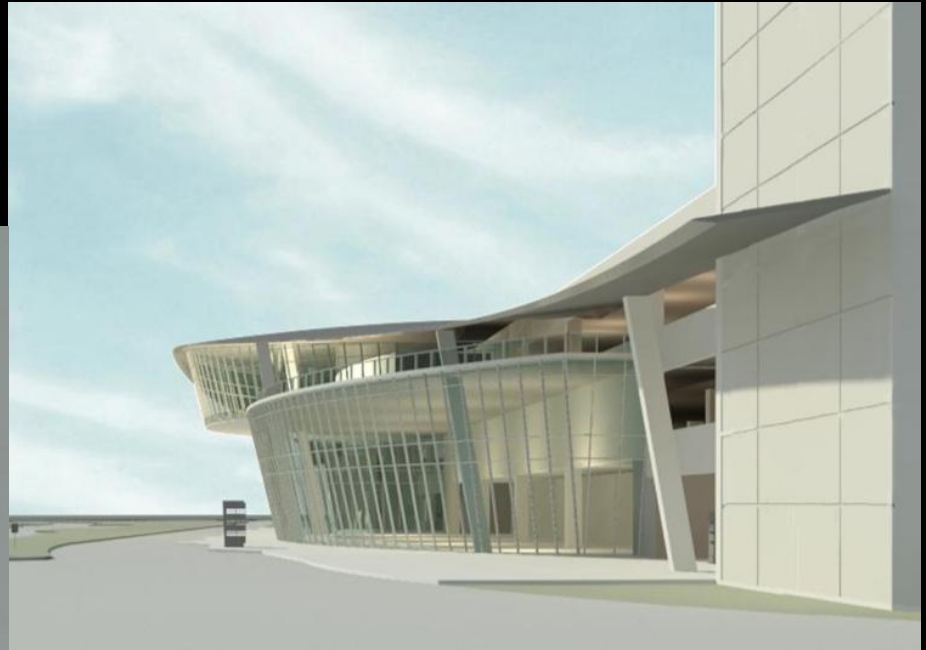
South Elevation Development



North Elevation Development



Without Restaurant



With Restaurant

South Elevation Development

Key Project Milestones

Milestone Event	Planned Date
Total Design Duration	Nov 2012 – Feb 2014
Coastal Commission App.	March 2013
Guaranteed Maximum Price Negotiation	April - Aug 2013
GMP to Board	September 2013
Proposed Construction	3 rd Q 2013 – 3 rd Q 2015
Operational	4 th Q 2015

Proposed Board Action

March 7, 2013

Request Board authorization of funds (\$25M) for early bid packages. Funds are contained within the approved budget (\$264M) for the Rental Car Center.

The authorized \$25M will be used for:

- Relocation of existing 42" Storm Line (Located in Conflict with Site)
- Removal of Pedestrian Bridge Over Pacific Highway
- Site Preparation, Underground Utilities, and Structural Systems (Pending Coastal Development Permit)

QUESTIONS?

